

L:\CUENTS\Department of State Lands\Fertine\Drawings\Corner Records.dwg

CERTIFIED CORNER RECORDATIONCorner S 1/16 Sections 35 & 36 T. 35N R. 26W P.M.M. LINCOLN CountyG.L.O. Record:

This interior section subdivisional corner was never set by G.L.O. or other original government survey, but its position can be calculated by dimensions shown on the official government plat for this township.

Subsequent Record:

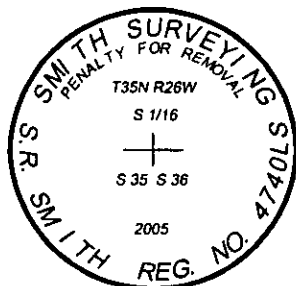
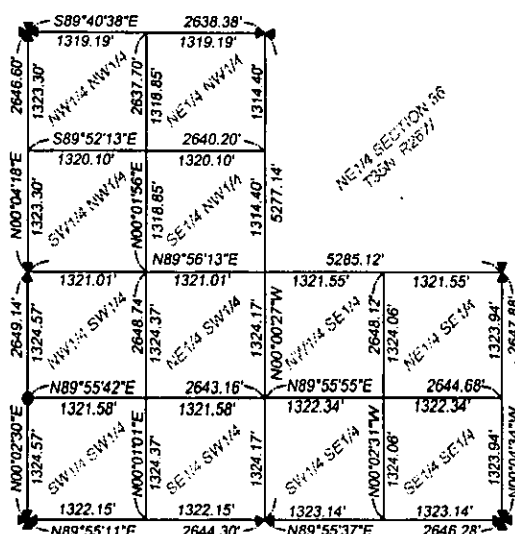
No subsequent record.

New Monumentation Established:

At the calculated position for the corner, as established by proportionate measure and as shown on the attached section subdivisional diagram, I set a Berntsen flared base monument (model #A1NBF30), which consists of a 2-3/8" diameter by 30" long flared aluminum pipe with a magnet and 3-1/4" diameter aluminum cap attached to the top, stamped as shown in detail below. Top of installed monument is flush with ground surface.

Section Subdivision

Section 36, Township 35 North, Range 26 West

**SKETCH OF CORNER****CERTIFICATION**I, Michael R. Rice

certify the information shown herein is true and correct.

Signature Ground Party Chief

I, S. R. Smith

certify that this Corner Record correctly represents work performed by me or under my direction in compliance with the "Corner Recordation Act" (70-22-101, et seq., M.C.A.)

Signature of Surveyor & Seal

Date: 9/26/05Reg. No. 44740LSEmployer: Smith Surveying & ConsultingOffice of Clerk and Recorder, County of Lincoln. This "corner

record" was filed for record 190089 BOOK: CCR CC&R'S PAGE: 10890 Pages: 1

was noted on the cross STATE OF MONTANA LINCOLN COUNTY

book No. RECORDED: 12/05/2005 2:17 KOI: CC&R'S

CORAL M. CUMMINGS CLERK AND RECORDER

FEE: \$0.00

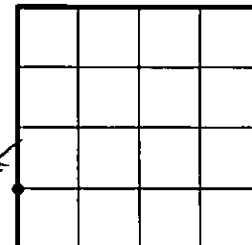
BY:

TO: SMITH SURVEYING 1131 SOUTH MAIN, P.O. BOX 7323, KALISPELL, MT

Cross Index No. Y-21 T. 35N R. 26W PMM

Adopted July 1, 1981, Montana Board of Professional Engineers & Land Surveyors

Sec. 36



●=corner this sheet

