

L:\CLIENTS\Department of State Lands\Fortine\Drawings\Corner Records.dwg

CERTIFIED CORNER RECORDATIONCorner C 1/4 Section 36 T. 35N R. 26W P.M.M. LINCOLN CountyG.L.O. Record:

This interior section subdivisional corner was never set by G.L.O. or other original government survey, but its position can be calculated by dimensions shown on the official government plat for this township.

Subsequent Record:

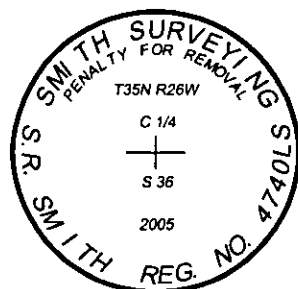
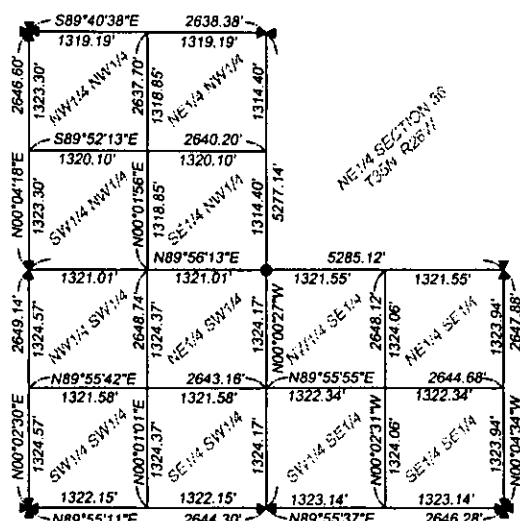
Certificate of Survey No. 1698, Tom Sands, 7975S. Certificate shows that corner position was established, but a monument was not set. Proportional methods used to establish the corner position were shown on sheet 2 of 2, and were verified as correct.

New Monumentation Established:

At the calculated position for the center quarter corner, as established by proportionate measure and as shown on the attached section subdivisional diagram, I set a Berntsen flared base monument (model #A1NBF30), which consists of a 2-3/8" diameter by 30" long flared aluminum pipe with a magnet and 3-1/4" diameter aluminum cap attached to the top, stamped as shown in detail below. Top of installed monument is flush with ground surface.

Section Subdivision

Section 36, Township 35 North, Range 26 West

**SKETCH OF CORNER****CERTIFICATION**I, Michael R. Rice

certify the information shown herein is true and correct.

Michael R. Rice
Signature Ground Party Chief

I, S. R. Smith

certify that this Corner Record correctly represents work performed by me or under my direction in compliance with the "Corner Recordation Act", (70-22-101, et seq., M.C.A.)

S.R. Smith
Signature of Surveyor & Seal

Date: 9/26/05 Reg. No. 4740LSEmployer: Smith Surveying & ConsultingOffice of Clerk and Recorder, County of Lincoln This "corner

record" was filed for record

was noted on the cross-index

book No. _____

190087 BOOK: CCR CCR'S PAGE: 10888 Pages: 1

STATE OF MONTANA LINCOLN COUNTY

RECORDED: 12/05/2005 2:14 KOI: CCR'S

CORAL M. CUMMINGS CLERK AND RECORDER

FEE: \$0.00

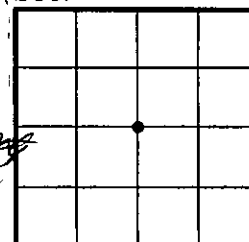
BY: [Signature]

TO: SMITH SURVEYING 1131 SOUTH MAIN, P.O. BOX 7323, KALISPELL, MT

Cross Index No. X-23 T. 35N R. 26W P.M.M.

Adopted July 1, 1981, Montana Board of Professional Engineers & Land Surveyors

Sec. 36



●=corner this sheet

