

CERTIFIED CORNER RECORDATIONCorner W 1/16 Sections 25 & 36 T. 35N R. 26W P.M.M. LINCOLN CountyG.L.O. Record:

This interior section subdivisional corner was never set by G.L.O. or other original government survey, but its position can be calculated by dimensions shown on the official government plat for this township.

Subsequent Record:

Certificate of Survey No. 2609, Dawn Marquardt, 7328S. Certificate shows that a 5/8" rebar with plastic ID Cap was set at the corner position. Proportional methods used to establish the corner position were not shown.

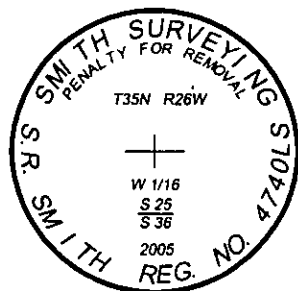
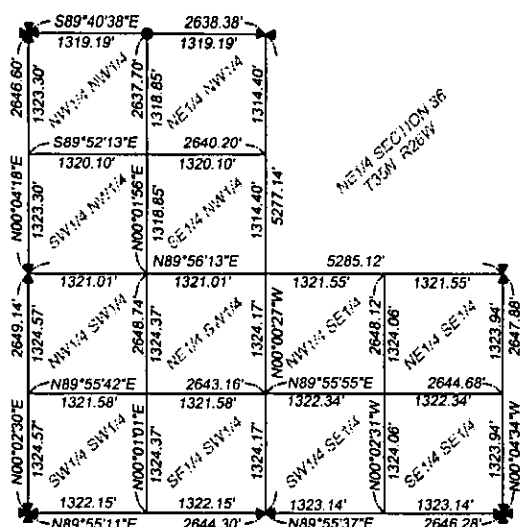
Evidence Found and New Monumentation Established:

At the calculated position for the corner, as established by proportionate measure and as shown on the attached section subdivisional diagram, I find a 5/8" diameter rebar with a yellow plastic cap stamped "7328S MARQUARDT".

I replace the rebar and cap with a Berntsen flared base monument (model #A1NBF30), which consists of a 2-3/8" diameter by 30" long flared aluminum pipe with a magnet and 3-1/4" diameter aluminum cap attached to the top, stamped as shown in detail below. I bury the rebar inside the monument pipe. Top of installed monument is flush with ground surface.

Section Subdivision

Section 36, Township 35 North, Range 26 West

**SKETCH OF CORNER****CERTIFICATION**

I, Michael R. Rice
certify the information shown herein is true and correct.

[Signature]
Signature Ground Party Chief

I, S. R. Smith
certify that this Corner Record correctly represents work performed by me or under my direction in compliance with the "Corner Recordation Act" (70-22-101, et seq., M.C.A.)

[Signature]
Signature of Surveyor & Seal

Date: 9/26/05 Reg. No. 4740LS

Employer: Smith Surveying & Consulting

Office of Clerk and Recorder, County of Lincoln This "corner record" was filed for record 190085 BOOK: CCR CC&R'S PAGE: 10886 Pages: 1
was noted on the cross-
book No. _____

STATE OF MONTANA LINCOLN COUNTY

RECORDED: 12/05/2005 2:10 KOI: CC&R'S

CORAL M. CUMMINGS CLERK AND RECORDER

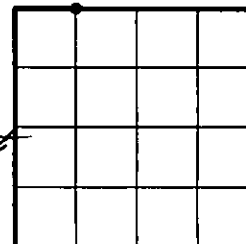
FEE: \$0.00

TO: SMITH SURVEYING 1131 SOUTH MAIN, P.O. BOX 7323, KALISPELL, MT

Cross Index No. V-22 T. 35N R. 26W PMM

Adopted July 1, 1981, Montana Board of Professional Engineers & Land Surveyors

Sec. 36



●=corner this sheet

