

CERTIFIED CORNER RECORDATION

Corner 1/4 S33 S4 T. 35 N. R. 26 W. P.M.M. LINCOLN County

I. Record: 1894 Original G.L.O. South and West Boundaries, Townships 34 and 35 North, Range 26 West, by Frank L. Sizer and Abraham L. Jaqueth; 40.00 chs. Set a limestone 12x16x8 ins., 11 ins. in the ground, for 1/4 Sec. Cor., marked 1/4 on N. face, from which:

A tamarack, 24 ins diam., bears N59°15'E, 42 lks. dist., marked 1/4 S BT.
A fir, 24 ins. diam., bears S16°15'E, 92 lks. dist., marked 1/4 S BT.

1959 B.L.M. Remonumentation by David R. Cunningham and William E. Stephens; The 1/4 sec. cor. of secs. 4 and 33, monumented with a limestone, 16x12x6 ins., set and marked as described in the official record, and witnessed by the remains of the two original bearing trees.

At the corner point

Set an iron post, 30 ins. long, 2 1/2 ins. diam., 28 ins. in the ground, in concrete, with brass cap mkd. from which:

The remains of the original bearing trees:

A larch stump, 34 ins. diam., bears N59 1/4°E, 42 lks. dist., marked 1/4 S BT. (Record)
A fir stump, 26 ins. diam., bears S16 1/4°E, 92 lks. dist., no marks visible. (Record)

The new bearing trees:

A fir, 6 ins. diam., bears N17 1/4°E, 37 lks. dist., marked 1/4 S 33 BT.
A larch, 8 ins. diam., bears S19 1/4°E, 20 lks. dist., marked 1/4 S 4 BT.

Bury the original stone alongside and raise a mound of stone, 3 ft. base, 2 ft. high, N. of the iron post.

1983 Certified Corner Recordation by Gerald E. Bunton, Reg. No. 4974 S; Found brass cap 3 1/4 in. diam. by BLM

A stump, 24 ins. diam., bears S 15°15' E, 42 lks. (tagged 41 lks. S60°W T33N, R26W, SEC 33 JWW,NBK), 6/16/59. Scribing visible
A 10 ins. diam. larch, , bears S19 3/4°E, 20 lks. (tagged 20 lks. N19 3/4°W, T34N, R26W, sec 4, DRC 9/59) Face grown over.
I paint the corner and B.T.'s

II. Found: 2 1/2 in. diam. iron pipe, 3 ins. above ground, with a 3 1/4 in. diam. BLM brass cap marked as shown above from which:

A stump, bears N59°E, 28.1 ft. dist., 1/4 S BT visible.
A larch high stump, 10 ins. diam., bears S19°E, 13.2 ft. dist., no visible marks.
A stump, bears S16°E, 60.6 ft. dist., no visible marks.

III. Established two new bearing trees:

A fir, 7 ins. diam., bears N60°E, 37.4 ft. dist., marked 1/4 S 33 BT.
A fir, 9 ins. diam., bears S30°W, 26.7 ft. dist., marked 1/4 S 4 BT.

Set a 6 ft. galvanized steel post, 3 ft. west of the corner, with Land Survey Monument decal attached.

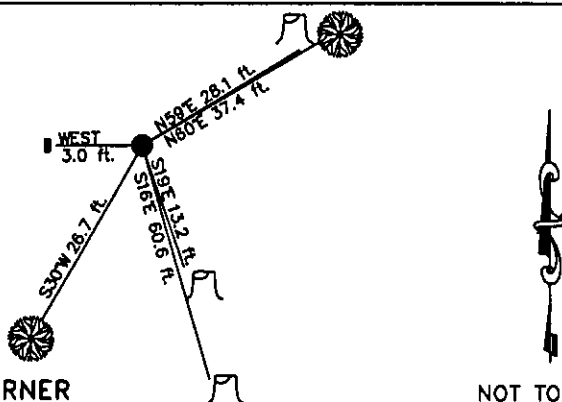
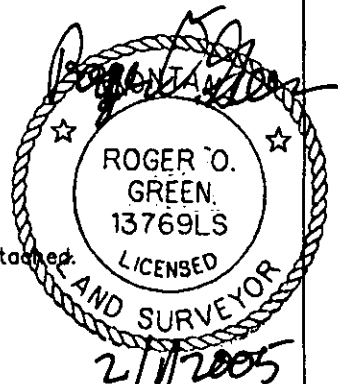
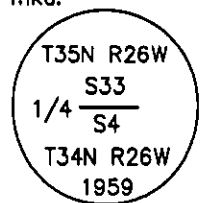
Date of Fieldwork: 4/28/2004

Survey crew: Steve Boyer, Tom Hommel

Magnetic declination: 18° East assumed

Equipment used: Hand compass and loggers tape

U.S. Forest Service, Supervisors Office, 1101 Hwy. 2 West, Libby, MT 59923 (406) 293-6211



SKETCH OF CORNER

NOT TO SCALE

CERTIFICATION

I, Steven A. Boyer 9750LS certify the information shown herein is true and correct.

Steven A. Boyer
Signature Ground Party Chief

I, Roger O. Green certify that this Corner Record correctly represents work performed by me or under my direction in compliance with the "Corner Recordation Act" 170-22-101, et seq., M.C.A.)

Roger O. Green
Signature of Surveyor & Seal

Date: 04/28/2004 Reg. No. 13769LS

Employer: U. S. Forest Service

Office of Clerk and Recorder, County of Lincoln This "corner

record" was filed 182253 BOOK: CCR CC&R'S PAGE: 10778 Pages: 1

was noted on th STATE OF MONTANA LINCOLN COUNTY
RECORDED: 02/02/2005 9:18 KOI: CC&R'S

book No. CORAL M. CUMMINGS CLERK AND RECORDER

FEE: \$0.00

BY: Heavenly Deputy

TO: FILED

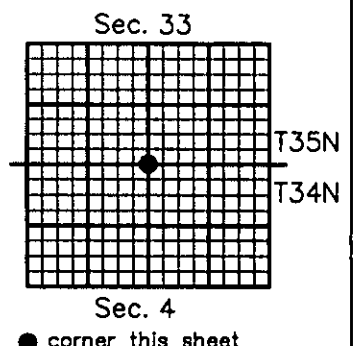
A-11

34N.

26W.

Cross Index No. Z-11 T. 35N. R. 26W. P.M., MT

Adopted July 1, 1981, Montana Board of Professional Engineers & Land Surveyors



[Faint, illegible handwritten notes]

1000

Wm. D. Hoar