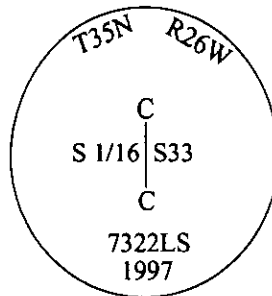


CERTIFIED CORNER RECORDATION

Corner CS 1/16 Sec. 33 T. 35N R. 26W P.M., MT Lincoln County

- I. No previous history.
- II. No evidence found.
- III. Set by survey, a 30 ins. long x 1 1/2 in. diam. aluminum rod, 25 ins. in the ground, with a 3 1/4 in. diam. aluminum cap mkd. as shown.

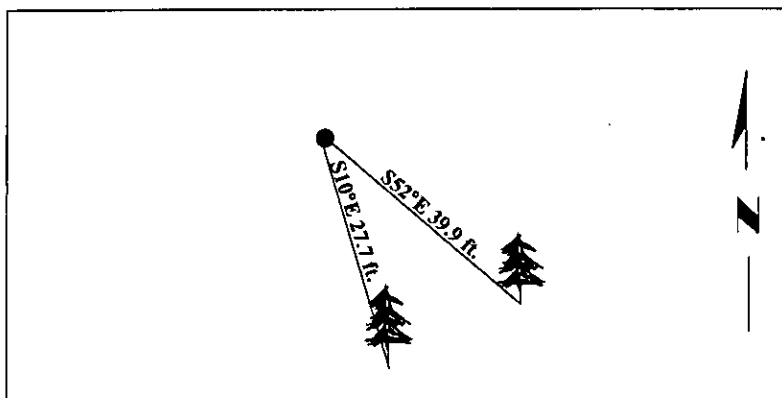


Established two bearing trees:

- A fir, 6 ins. diam., bears S10°E, 27.7 ft. dist., mkd. "X BT".
- A fir, 8 ins. diam., bears S52°E, 39.9 ft. dist., mkd. "CS 1/16 S33 BT".

Painted bearing trees and attached Land Survey Monument and Bearing Tree signs.

Magnetic Declination: 20° East.

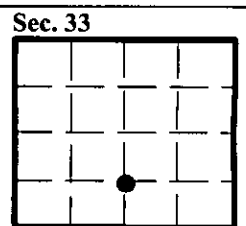


SKETCH OF CORNER

CERTIFICATION	
I, <u>Mark Federman</u>	certify the information shown herein is true and correct.
I, <u>Alvah F. Hughes</u>	certify that this Corner Record correctly represents work performed by me or under my direction in compliance with the "Corner Recordation Act", (70-22-101, et seq., M.C.A.)
Date: <u>07/29/97</u>	Signature of Surveyor & Seal
Reg. No.: <u>7322LS</u>	
Employer: <u>U.S. FOREST SERVICE</u>	

Office of Clerk and Recorder, County of Lincoln. This "corner record" was filed for record on 12-26-97 was noted on the cross-index plat and is assigned page No. 10051 in book No. _____

County Official



● - corner this sheet

Cross Index No. Y-11 T. 35N R. 26W P.M., MT

