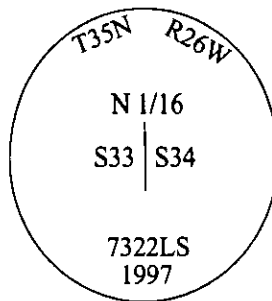


CERTIFIED CORNER RECORDATION

Corner N 1/16 Sec. 33&34 T. 35N R. 26W P.M., MT Lincoln County

- I. No previous history.
- II. No evidence found.
- III. Set by survey, a 30 ins. long x 1 1/2 in. diam. aluminum rod, 27 ins. in the ground, with a 3 1/4 in. diam. aluminum cap mkd. as shown.

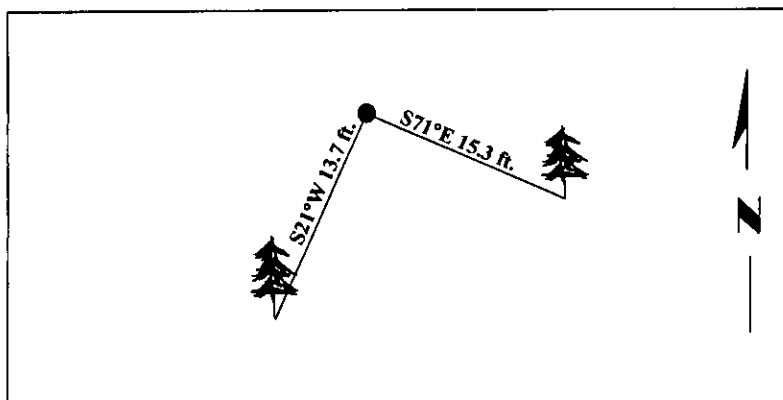


Established two bearing trees:

- A fir, 10 ins. diam., bears S71°E, 15.3 ft. dist., mkd. "N 1/16 S34 BT".
- A fir, 11 ins. diam., bears S21°W, 13.7 ft. dist., mkd. "N 1/16 S33 BT".

Painted bearing trees and attached Land Survey Monument and Bearing Tree signs.

Magnetic Declination: 20° East.

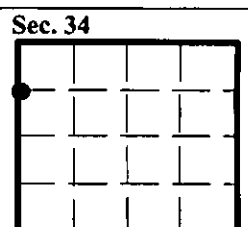


SKETCH OF CORNER

CERTIFICATION	
I, <u>Mark Federman</u>	certify the information shown herein is true and correct.
I, <u>Alvah F. Hughes</u>	certify that this Corner Record correctly represents work performed by me or under my direction in compliance with the "Corner Recordation Act", (70-22-101, et seq., M.C.A.)
Date: <u>07/29/97</u>	Signature of Surveyor & Seal <u>7322LS</u>
Reg. No.: <u>7322LS</u>	
Employer: <u>U.S. FOREST SERVICE</u>	

Office of Clerk and Recorder, County of Lincoln. This "corner record" was filed for record on 12-26-97 was noted on the cross-index plat and is assigned page No. 10050 in book No. _____

Coral M. Cunningham & PEB
County Official



• - corner this sheet

Cross Index No. W-13 T. 35N R. 26W P.M., MT

