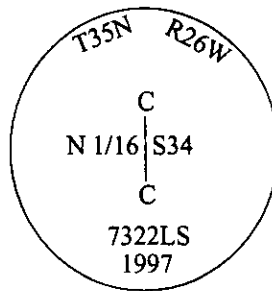


CERTIFIED CORNER RECORDATION

Corner CN 1/16 Sec. 34 T. 35N R. 26W P.M., MT Lincoln County

- I. No previous history.
- II. No evidence found.
- III. Set by survey, a 30 ins. long x 1 1/2 in. diam. aluminum rod, set flush with the ground, with a 3 1/4 in. diam. aluminum cap mkd. as shown.

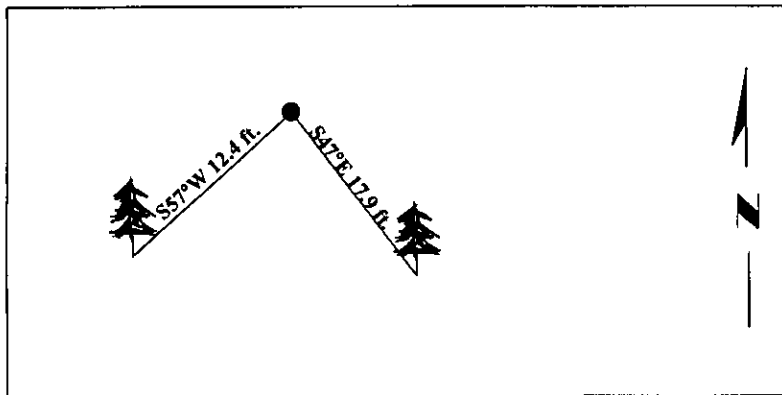


Established two bearing trees:

- A fir, 13 ins. diam., bears S47°E, 17.9 ft. dist., mkd. "CN 1/16 S34 BT".
- A fir, 9 ins. diam., bears S57°W, 12.4 ft. dist., mkd. "X BT".

Painted bearing trees and attached Land Survey Monument and Bearing Tree signs.

Magnetic Declination: 20° East.



SKETCH OF CORNER

CERTIFICATION

I, **Mark Federman**

certify the information shown herein is true and correct.

Mark Federman

I, **Alvah F. Hughes**

certify that this Corner Record correctly represents work performed by me or under my direction in compliance with the "Corner Recordation Act" (70-22-101, et seq.; M.C.A.)

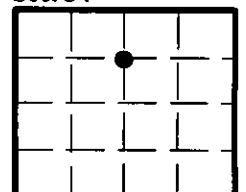
Alvah F. Hughes
Signature of Surveyor & Seal

Date: **07/29/97**

Reg. No.: **7322LS**

Employer: **U.S. FOREST SERVICE**

Sec. 34



• - corner this sheet

Office of Clerk and Recorder, County of *Lincoln*. This "corner record" was filed for record on 12-26-97 was noted on the cross-index plat and is assigned page No. **10049** in book No. _____

Carol M. Cumming
County Official

Cross Index No. W-15 T. 35N R. 26W P.M., MT

1974