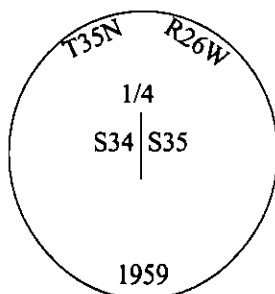


# CERTIFIED CORNER RECORDATION

Corner 1/4 Sec. 34&35 T. 35N R. 26W P.M., MT Lincoln County

- I. 1894 G.L.O. Original Record by Frank L. Sizer et. al.: Set a post, 3 ft. long, 3 ins. square, 24 ins. in the ground, for 1/4 sec. cor. mkd. "1/4 S" on W. face. Established two bearing trees.

1959 Remonumentation Record by David R. Cunningham et. al.: The 1/4 sec. cor. of secs. 34 and 35, determined from the remains of the two original bearing trees. The remains of the original wooden post was found lying on the ground. At the corner point, set an iron post, 30 ins. long, 2 1/2 ins. diam., 26 ins. in the ground, in concrete, with brass cap mkd. as shown.



Established two new bearing trees and buried the remains of the original post, inverted, alongside and raise a mound of stone, 3 ft. base, 1.5 ft. high, W. of the iron post.

1983 Certified Corner Recordation by Jack H. Ninneman, 4661S: Found a 3 1/2 in. diam. brass capped monument. Found one G.L.O. and both B.L.M. bearing trees.

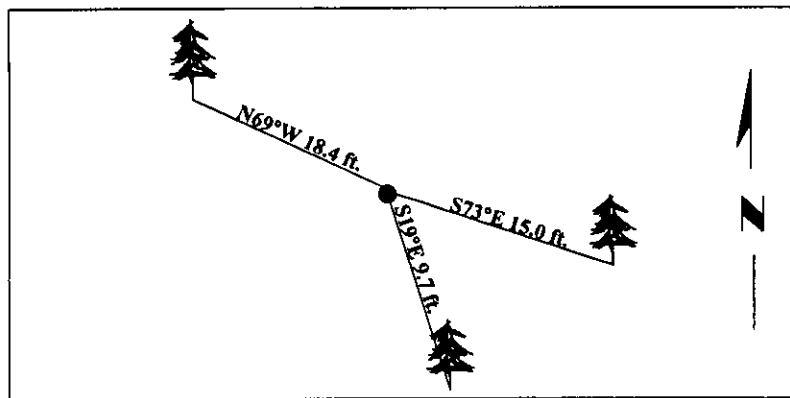
- II. Found a 3 1/2 in. diam. B.L.M. brass cap, protruding 3 ins. above the ground, firmly set, mkd. as shown above. A mound of stone, 3x3 ft., 1.0 ft. high, West, 1.5 ft. dist.

from which:

- A larch, 12 ins. diam., bears S19°E, 9.7 ft. dist., with visible scribe. (BLM-record)
- A fir, 12 ins. diam., bears S73°E, 15.0 ft. dist., with visible scribe. (GLO-record-S75°45'E)
- A fir, 15 ins. diam., bears N69°W, 18.4 ft. dist., with a healed face. (BLM-record)

- III. Painted bearing trees and attached Land Survey Monument and Bearing Tree signs.

Magnetic Declination: 20° East.



SKETCH OF CORNER

## CERTIFICATION

I, Mark Federman

certify the information shown herein is true and correct.

*Mark Federman*

I, Alvah F. Hughes

certify that this Corner Record correctly represents work performed by me or under my direction in compliance with the "Corner Recordation Act" (70-2200, et seq., M.C.A.)

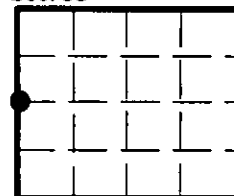
*Alvah F. Hughes*  
Signature of Surveyor & Seal

Date: 07/18/97

Reg. No.: 7322LS

Employer: U.S. FOREST SERVICE

Sec. 35



● - corner this sheet

Office of Clerk and Recorder, County of *Lincoln*. This "corner record" was filed for record on 12-26-97 was noted on the cross-index plat and is assigned page No. 10046

in book No. \_\_\_\_\_

*Coral M. Cunningham By RLB*  
County Official

Cross Index No. X-17 T. 35N R. 26W P.M., MT

