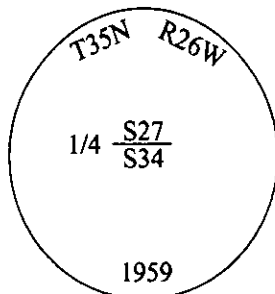


# CERTIFIED CORNER RECORDATION

Corner 1/4 Sec. 27&34 T. 35N R. 26W P.M., MT Lincoln County

I. 1894 G.L.O. Original Record by Frank L. Sizer et. al.: Set a quartzite stone, 18x8x8 ins., 12 ins. in the ground, for 1/4 sec. cor., mkd. "1/4" on N. face. Established two bearing trees.

1959 Remonumentation Record by David R. Cunningham et. al.: The 1/4 sec. cor. of secs. 27 and 34, monumented with a quartzite stone, 20x12x8 ins., set and mkd. as described in the official record, and witnessed by the remains of the two original bearing trees. At the corner point, set an iron post, 30 ins. long, 2 1/2 in. diam., 26 ins. in the ground, in concrete, with brass cap mkd. as shown.



Established two new bearing trees and bury the original stone alongside and raise a mound of stone, 2.5 ft. base, 1.5 ft. high, West of the iron post.

1991 Certified Corner Recordation by Alvah F. Hughes, 7322LS: Filed in Lincoln County Courthouse, page no. 4520.

II. Found a 3/4 in. diam. brass cap, protruding 2 ins. above the ground, firmly set, mkd. as shown above.

from which:

A fir, 14 ins. diam., bears S40°E, 35.3 ft. dist., with a healed face. (BLM-record-S42°1/2'W)

A larch stump, 16 ins diam, bears S41°E, 30.5 ft. dist., "BT" visible (GLO-record-S42°30'E)

A pine, 15 ins. diam., bears S86°W, 59.3 ft. dist., with visible scribe. (BLM-record-N85 3/4°W)

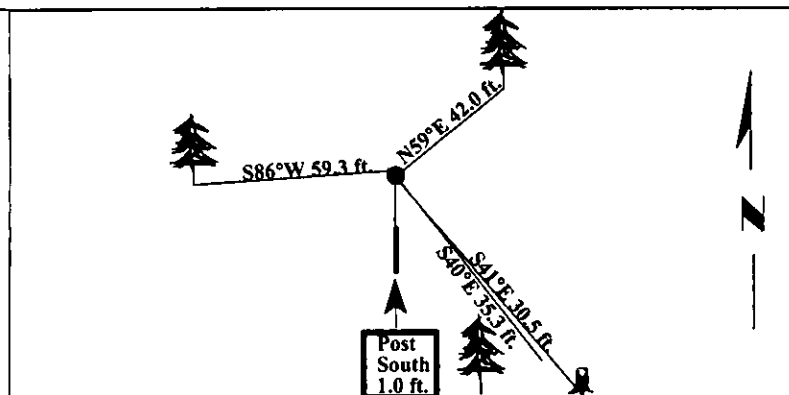
III. Established one new bearing tree:

A fir, 11 ins. diam., bears N59°E, 42.0 ft. dist., mkd. "1/4 S27 BT".

A 6 ft. galvanized steel guard post, bears South, 1.0 ft. dist.

Painted bearing trees and attached Land Survey Monument and Bearing Tree signs.  
Attached Land Survey Monument and Property Boundary decals to the post.

Magnetic Declination: 20° East.

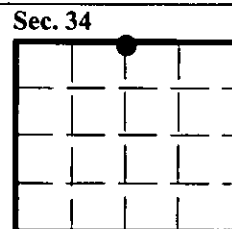


SKETCH OF CORNER

CERTIFICATION	
I, <u>Mark Federman</u>	certify the information shown herein is true and correct.
I, <u>Alvah F. Hughes</u>	certify that this Corner Record correctly represents work performed by me or under my direction in compliance with the "Corner Recordation Act" (70-22-101, et seq., M.C.A.)
Date: <u>09/24/97</u>	Signature of Surveyor & Seal
Reg. No.: <u>7322LS</u>	
Employer: <u>U.S. FOREST SERVICE</u>	

Office of Clerk and Recorder, County of Lincoln This "corner record" was filed for record on 12-26-97 was noted on the cross-index plat and is assigned page No. 10043 in book No. \_\_\_\_\_

County Official



• - corner this sheet

