

# CERTIFIED CORNER RECORDATION

Corner 1/4 Sec. 28&33 T. 35N R. 26W P.M., MT Lincoln County

- I. 1894 G.L.O. Original Record by Frank L. Sizer et. al.: Set a post, 3 ft. long, 3 ins. square, 24 ins. in the ground, for 1/4 sec. cor. mkd. "1/4 S" on N. face. Established two bearing trees.

1961 Certified Corner Recordation by Dean K. Marquardt, 2989ES: Set by single proportion, an iron pipe, with brass cap.

Set two corner references:

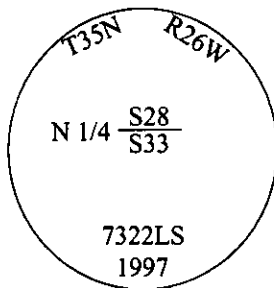
- A fence post, bears N35°E, 91.78 ft. dist. of the corner, with a bearing tree and E.S. tag.  
A fence post, bears S05°W, 164.84 ft. dist. of the corner, with a bearing tree and E.S. tag.

- II. Found a 2 in. diam. iron pipe, without cap, protruding 2 ins. above the ground,  
from which:

- A fence post, bears N45°E, with a bearing tree and E.S. tag.  
A fence post, bears S11°W, with a bearing tree and E.S. tag.

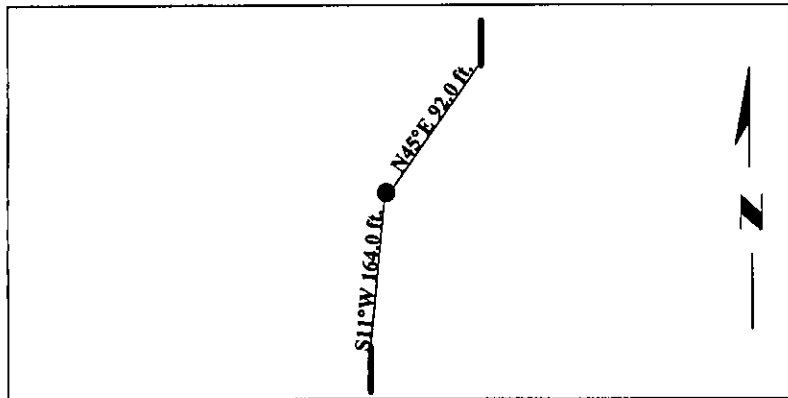
\*Note-Land owner has replaced fence posts with new posts.

- III. Replaced the iron pipe with a 30 ins. long x 2 1/2 in. diam. aluminum post, with a 3 1/4 in. diam. cap, mkd. as shown. Placed the found pipe inside aluminum post, 28 ins. in the ground.



Attached bearing tree signs to the fence posts.

Magnetic Declination: 20° East.

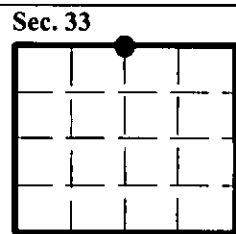


SKETCH OF CORNER

CERTIFICATION	
I, <u>Mark Federman</u>	certify the information shown herein is true and correct.
I, <u>Alvah F. Hughes</u>	certify that this Corner Record correctly represents work performed by me or under my direction in compliance with the "Corner Recordation Act", (70-22-161, et seq., M.C.A.)
Date: <u>07/30/97</u>	Signature of Surveyor & Seal
Reg. No.: <u>7322LS</u>	
Employer: <u>U.S. FOREST SERVICE</u>	

Office of Clerk and Recorder, County of Lincoln. This "corner record" was filed for record on 12-26-97 was noted on the cross-index plat and is assigned page No. 10041, in book No. \_\_\_\_\_

Coral M. Cunningham  
County Official



● - corner this sheet

100