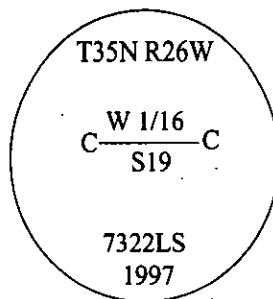


CERTIFIED CORNER RECORDATION

Corner CW 1/16 Sec. 19 T. 35N R. 26W P.M., MT Lincoln County

- I. No history found.
- II. No evidence found.
- III. Set by survey, an aluminum rod, 30 ins. long, 3/4 in. diam., flush with the ground, with a 3 1/4 in. diam. aluminum cap mkd. as shown below:

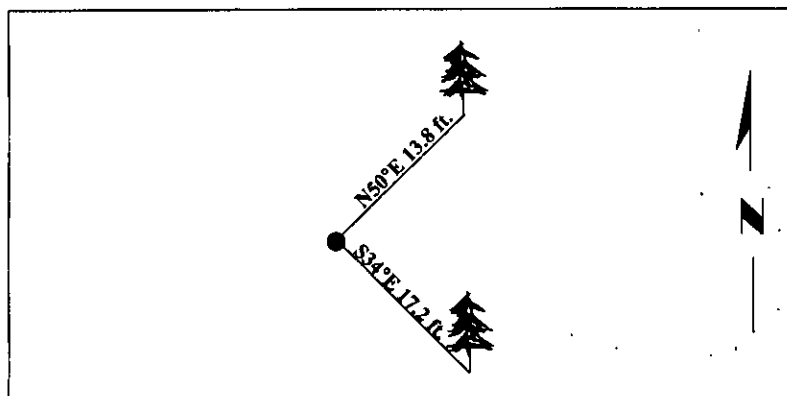


Established two bearing trees:

- A larch, 10 ins. diam., bears N50°E, 13.8 ft. dist., mkd. "CW 1/16 S19 BT".
- A fir, 8 ins. diam., bears S34°E, 17.2 ft. dist., mkd. "CW 1/16 S19 BT".

Painted bearing trees and attached Land Survey Monument and Bearing Tree signs.

Magnetic Declination: 20° East.



SKETCH OF CORNER

<p>CERTIFICATION</p> <p>I, <u>Thomas Hommel</u> certify the information shown herein is true and correct.</p> <p><u>Alvah F. Hughes</u> certify that this Corner Record correctly represents work performed by me or under my direction in compliance with the "Corner Recordation Act" (70-22-101, et seq., M.C.A.)</p> <p><u>Alvah F. Hughes</u> Signature of Surveyor & Seal</p> <p>Date: <u>11/25/97</u></p> <p>Reg. No.: <u>7322LS</u></p> <p>Employer: <u>U.S. FOREST SERVICE</u></p>		<p>ALVAH F. HUGHES 7322 LS REGISTERED LAND SURVEYOR MONTANA</p>
--	--	---

Office of Clerk and Recorder, County of Lincoln. This "corner record" was filed for record on 12-26-97 was noted on the cross-index plat and is assigned page No. 10002 in book No.

Coral M. Cummins County Official

