

CERTIFIED LAND CORNER RECORDATION
(REFERENCE FSM 7153.53)

DESCRIPTION OF CORNER EVIDENCE FOUND, AND ORIGINAL RECORD (IF KNOWN)

No previous record of corner establishment on file.

DESCRIPTION OF MONUMENT AND ACCESSORIES ESTABLISHED
TO PERPETUATE THE ORIGINAL LOCATION OF THIS CORNER:

Date of work: 6/3/80

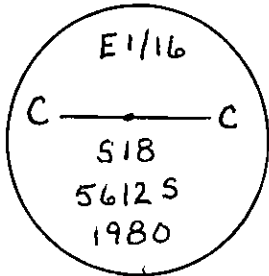
Set a 2 1/2" X 30" aluminum pipe 25" in the ground with the cap marked as shown: Collar of stone.

From which:

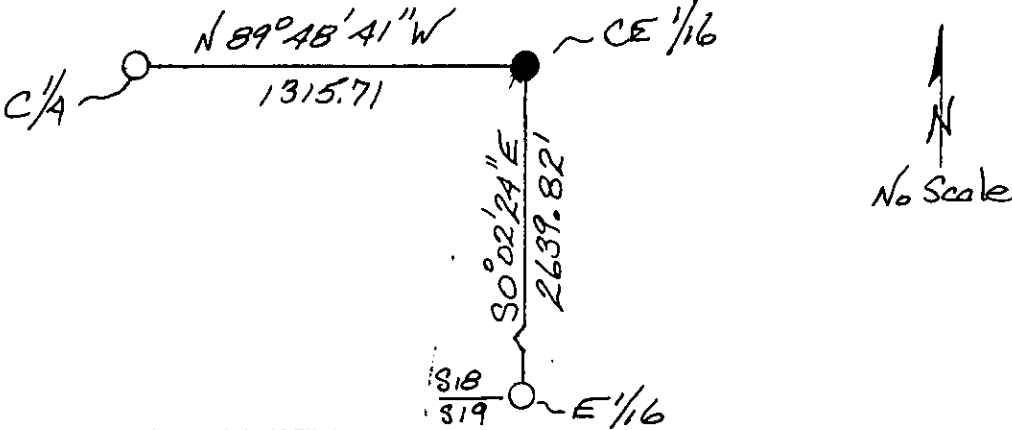
A 7" douglas fir bears N 40°W, 12.0 FT. marked: x BT.

A 8" douglas fir bears S 20°E, 6.5 FT. marked: CE 1/16 S18 BT.

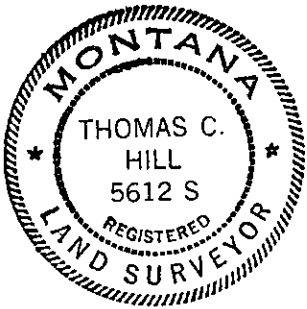
Attached location poster to a 4" douglas fir, bears N 73°E, 2.2 FT.



SKETCH, WITH COURSE AND DISTANCE TO ADJACENT CORNERS IF DETERMINED IN THIS SURVEY.
(MAY SKETCH OR PASTE REPRODUCTION ON REVERSE SIDE.)



Surveyor's Seal



I, Anthony J. Bachman
certify that the information shown herein is true and correct.

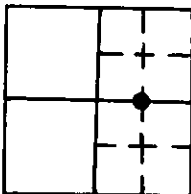
Anthony J. Bachman
Signature of Ground Party Chief

I, Thomas C. Hill
certify that I have carefully performed or reviewed the work done on the diagrammed corner as reported on this recordation form and approve the same.

Thomas C. Hill
Signature of Surveyor

DIAGRAM OF CORNER:

N. T35N R25W
1 CE 1/16
SEC 18



● = Corner recorded on the sheet

5612-S
Registration Number

Office of Clerk and Recorder, County of Lincoln

This "corner record" was filed for record on the 15th day of December, 1980, was noted on the cross-index plat and is assigned page No. 963, in book No. 1.

Edward L. Vaughn, Jr.
County Official

Cross Index No. L-4 T. 35N R. 25W Mer.

