

CERTIFIED LAND CORNER RECORDATION
(REFERENCE FSM 7153.53)

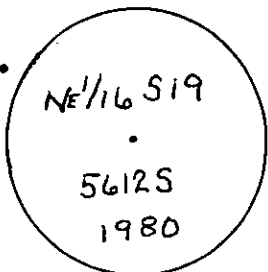
DESCRIPTION OF CORNER EVIDENCE FOUND, AND ORIGINAL RECORD (IF KNOWN)

Found an unrecorded 5/8" rebar in the position of N E 1/16 S19.
Plastic cap marked: 2989ES.

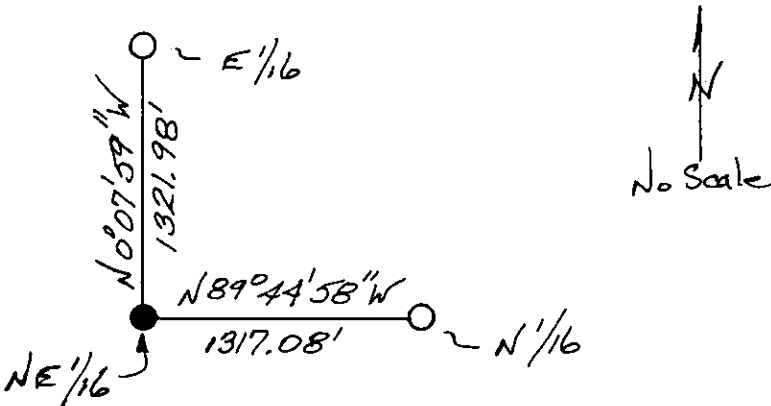
DESCRIPTION OF MONUMENT AND ACCESSORIES ESTABLISHED
TO PERPETUATE THE ORIGINAL LOCATION OF THIS CORNER:

Set a 2 1/2" X 30" alum. pipe 25" in the ground with a collar of stone,
cap marked as shown:
A 7" douglas fir bears N 53°W, 29.5 FT. marked NE 1/16 S 19 BT.
A 10" douglas fir bears N 78°E, 26.7 FT marked: x BT.
Attached location poster to a 9" western larch bears N 34°W, 17.3 FT.
* PLACE FOUND REBAR INSIDE OF PIPE

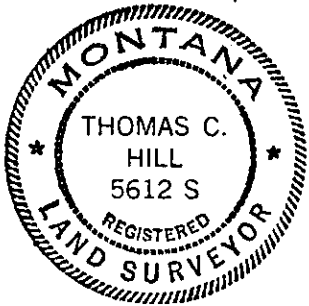
Date of work: 6/4/80



SKETCH, WITH COURSE AND DISTANCE TO ADJACENT CORNERS IF DETERMINED IN THIS SURVEY.
(MAY SKETCH OR PASTE REPRODUCTION ON REVERSE SIDE.)



Surveyor's Seal



I, Anthony J. Bachman
certify that the information shown herein is true and correct.

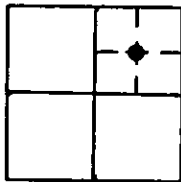
Anthony J. Bachman
Signature of Ground Party Chief

I, Thomas C. Hill
certify that I have carefully performed or reviewed the work done on the diagrammed corner as reported on this recordation form and approve the same.

Thomas C. Hill
Signature of Surveyor

DIAGRAM OF CORNER:

N. T35N R25W
1 NE 1/16
SEC 19



● = Corner recorded on the sheet

5612-S
Registration Number

Office of Clerk and Recorder, County of Lincoln

This "corner record" was filed for record on the 15th day of December 1980, was noted on the cross-index plat and is assigned page No. 962, in book No. 1

Eleanor L. Vaughn, by Betty Bell
County Official

Cross Index No. 0-4 T. 35N R. 25W Mer.

