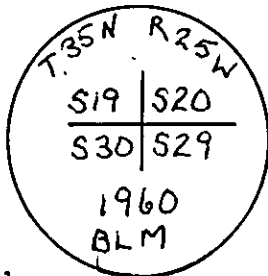


CERTIFIED LAND CORNER RECORDATION
(REFERENCE FSM 7153.53)

DESCRIPTION OF CORNER EVIDENCE FOUND, AND ORIGINAL RECORD (IF KNOWN)

Found a 2 1/2" B.L.M. brass cap approx. 3" above ground marked as shown. Mound of stone approx. 2.0 ft. West of corner.

- From which: A 15" fir bears S62° E., 37.7 ft.
A 8" fir bears N15° E., 29.0 ft.
A 12" larch bears N60° W., 36.5 ft.
A 7" larch bears S26° W., 41.8 ft.
All bearing trees alive and well with healed faces.



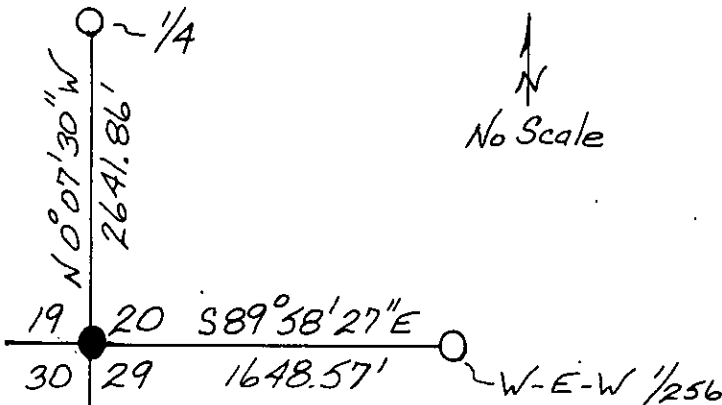
B.L.M. 1960 record; From found original evidence: Set a 2 1/2" iron post with brass cap marked as shown:

DESCRIPTION OF MONUMENT AND ACCESSORIES ESTABLISHED TO PERPETUATE THE ORIGINAL LOCATION OF THIS CORNER:

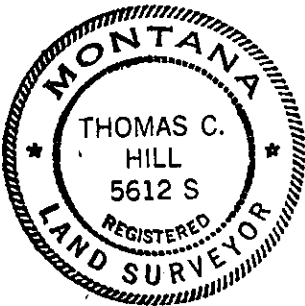
Date of work: 5/27/80

Painted red bands around bearing trees and attached Attention sign.

SKETCH, WITH COURSE AND DISTANCE TO ADJACENT CORNERS IF DETERMINED IN THIS SURVEY. (MAY SKETCH OR PASTE REPRODUCTION ON REVERSE SIDE.)



Surveyor's Seal



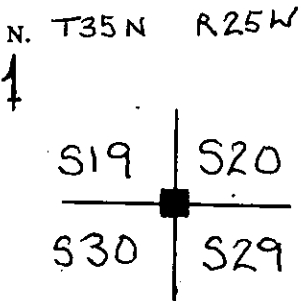
I, Anthony J. Bachman certify that the information shown herein is true and correct.

Anthony J. Bachman
Signature of Ground Party Chief

I, Thomas C. Hill certify that I have carefully performed or reviewed the work done on the diagrammed corner as reported on this recordation form and approve the same.

Thomas C. Hill
Signature of Surveyor

DIAGRAM OF CORNER:



■ = Corner recorded on the sheet

5612-S
Registration Number

Office of Clerk and Recorder, County of Lincoln
his "corner record" was filed for record on the 15th day of December 1980, was noted on the cross-index plat and is assigned page No. 953, in book No. 1

Edward L. Vaughn, Jr.
County Official

Cross Index No. R-5 T 35N R 25W Mer.

