

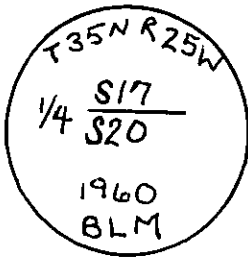
CERTIFIED LAND CORNER RECORDATION  
(REFERENCE FSM 7153.53)

DESCRIPTION OF CORNER EVIDENCE FOUND, AND ORIGINAL RECORD (IF KNOWN)

Found a 2 1/2" B.L.M. brass cap app. 3" above ground. Collar of stone, mound of stone 1' North  
Marked as shown:

Found a 8" douglas fir bears N27°W, 16.7 ft., scribing visible, tree has dead top.  
Found a 13" douglas fir bears S47°W, 19.3 ft., healed face, alive and well.

1960 B.L.M. record: From found original evidence set a 2 1/2" iron post with  
brass cap marked as shown:  
From which: A 8" fir Bears N26 1/2° W., 25 lks.  
A 10" fir bears S47 1/4° W., 28 lks.

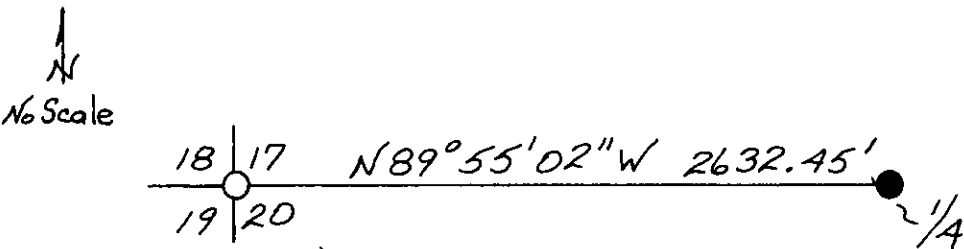


DESCRIPTION OF MONUMENT AND ACCESSORIES ESTABLISHED  
TO PERPETUATE THE ORIGINAL LOCATION OF THIS CORNER:

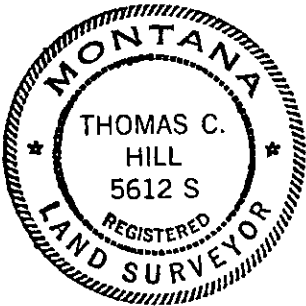
Date of work: 5/28/80

Painted red bands around bearing trees.

SKETCH, WITH COURSE AND DISTANCE TO ADJACENT CORNERS IF DETERMINED IN THIS SURVEY.  
(MAY SKETCH OR PASTE REPRODUCTION ON REVERSE SIDE.)



Surveyor's Seal



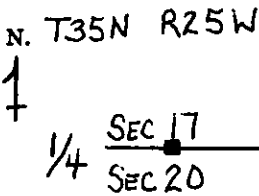
I, Anthony J. Bachman  
certify that the information shown herein is true and correct.

Anthony J. Bachman  
Signature of Ground Party Chief

I, Thomas C. Hill  
certify that I have carefully performed or reviewed the work done on the diagrammed corner as reported on this recordation form and approve the same.

Thomas C. Hill  
Signature of Surveyor

DIAGRAM OF CORNER:



■ = Corner recorded on the sheet

5612-S  
Registration Number

Office of Clerk and Recorder, County of Lincoln

This "corner record" was filed for record on the 15th day of December, 1980, was noted on the cross-index plat and is assigned page No. 952, in book No. 1

Charles L. Taugha, by Scott Ball,  
County Official

Cross Index No. N-7 T. 35N R. 25W Mer.

1. The first part of the report is a general  
description of the project and its objectives.  
2. The second part is a detailed description of the  
methodology used in the study.

3. The third part is a discussion of the results.

4. The fourth part is a conclusion and  
recommendations.

5. The fifth part is a list of references.

6. The sixth part is an appendix.

7. The seventh part is a list of figures and  
tables.