

CERTIFIED LAND CORNER RECORDATION  
(REFERENCE FSM 7153.53)

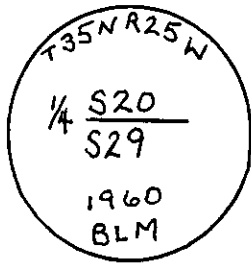
DESCRIPTION OF CORNER EVIDENCE FOUND, AND ORIGINAL RECORD (IF KNOWN)

Found a 2 1/2" B.L.M. brass cap app. 3" above ground . Mound of stone app. 1' NW of corner.  
Marked as shown:

From which: A 6" larch bears N35°W, 19.8 ft., healed face, alive and well.  
A 30" larch bears S11°W, 6.7 ft., scribing visible, alive and well.

1960 B .L.M. record; From found original evidence: Set a 2 1/2" iron post with  
brass cap. Marked as shown:

From which: A 5" larch bears N34 1/2°W., 29 lks.  
A 28" larch bears S11 1/2°W., 8 lks.

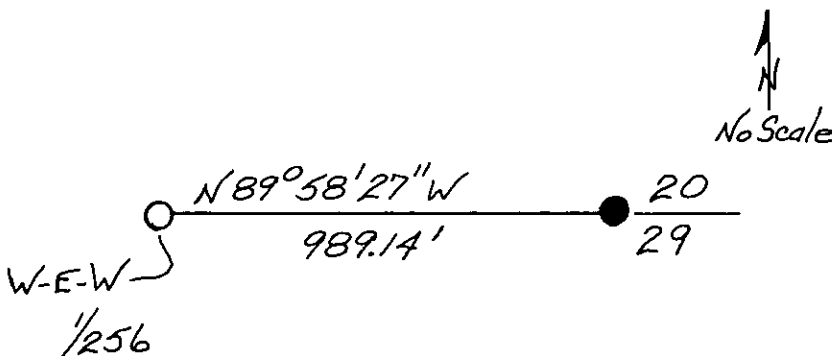


DESCRIPTION OF MONUMENT AND ACCESSORIES ESTABLISHED  
TO PERPETUATE THE ORIGINAL LOCATION OF THIS CORNER:

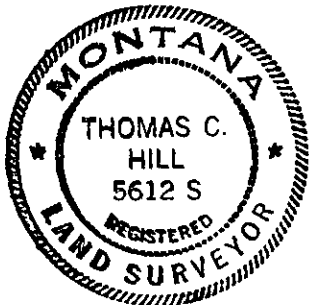
Date of work: 5/29/80

Painted red bands around bearing trees.

SKETCH, WITH COURSE AND DISTANCE TO ADJACENT CORNERS IF DETERMINED IN THIS SURVEY.  
(MAY SKETCH OR PASTE REPRODUCTION ON REVERSE SIDE.)



Surveyor's Seal



I, Anthony J. Bachman  
certify that the information shown herein is true and correct.

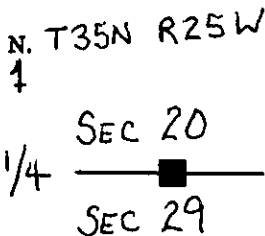
Anthony J. Bachman  
Signature of Ground Party Chief

I, Thomas C. Hill  
certify that I have carefully performed or reviewed the work done on the diagrammed corner as reported on this recordation form and approve the same.

Thomas C. Hill  
Signature of Surveyor

5612-S  
Registration Number

DIAGRAM OF CORNER:



■ = Corner recorded on the sheet

Office of Clerk and Recorder, County of Lisicola

This "corner record" was filed for record on the 15th day of December 1980, was noted on the cross-index plat and is assigned page No. 951, in book No. 1

Charles L. Vaughn, Jr.  
County Official

Cross Index No. R-7 T. 35N R. 25W Mer.

