

CERTIFIED LAND CORNER RECORDATION
(REFERENCE FSM 7153.53)

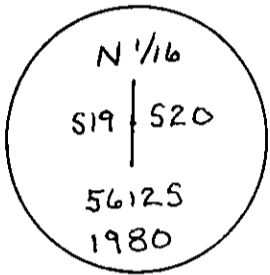
DESCRIPTION OF CORNER EVIDENCE FOUND, AND ORIGINAL RECORD (IF KNOWN)

No previous record of corner establishment on file.
Found a steel fence post which bears N85°W., 21.0 ft.

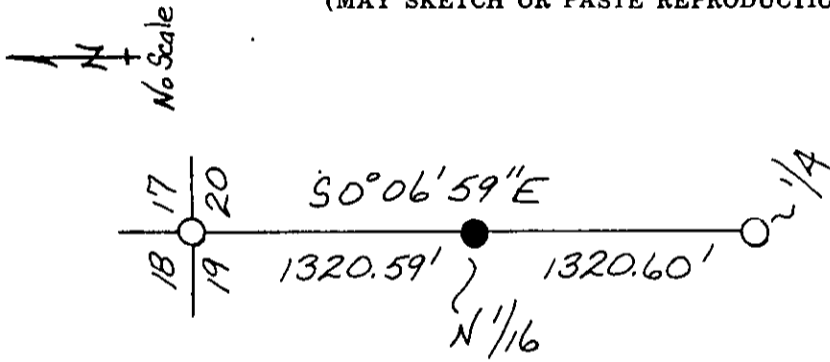
DESCRIPTION OF MONUMENT AND ACCESSORIES ESTABLISHED
TO PERPETUATE THE ORIGINAL LOCATION OF THIS CORNER:

Set a 2 1/2" X 30" alum. pipe 2 1/4" in the ground with a collar of stone, (mound of stone 2 FT.W. of corner) cap marked as shown:
A 11" western larch bears S 78°W, 44.8 Ft. marked: N 1/16 S19 BT.
A 13" douglas fir bears S 81°E, 18.7 FT. marked: N 1/16 S20 BT.
Attached location poster on a 9" douglas fir bears S 79°E, 27.5 FT.

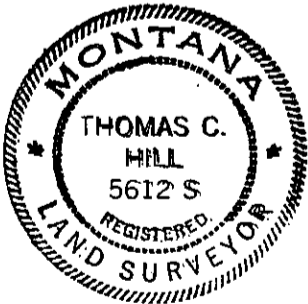
Date of work: 6/4/80



SKETCH, WITH COURSE AND DISTANCE TO ADJACENT CORNERS IF DETERMINED IN THIS SURVEY.
(MAY SKETCH OR PASTE REPRODUCTION ON REVERSE SIDE.)



Surveyor's Seal



I, Anthony J. Bachman
certify that the information shown herein is true and correct.

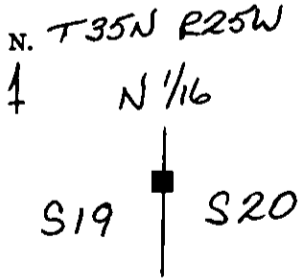
Anthony J. Bachman
Signature of Ground Party Chief

I, Thomas C. Hill
certify that I have carefully performed or reviewed the work done on the diagrammed corner as reported on this recordation form and approve the same.

Thomas C. Hill
Signature of Surveyor

5612-S
Registration Number

DIAGRAM OF CORNER:



■ = Corner recorded on the sheet

Office of Clerk and Recorder, County of Lincoln

This "corner record" was filed for record on the 15th day of December, 1980, was noted on the cross-index plat and is assigned page No. 950, in book No. 1

George L. Vaughn, by Betty Lee,
County Official, deputy

Cross Index No. 0-5 T.35N R.25W Mer.

