

**CERTIFIED LAND CORNER RECORDATION**  
(REFERENCE FSM 7153.53)

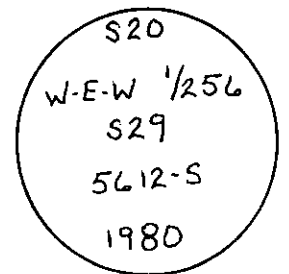
DESCRIPTION OF CORNER EVIDENCE FOUND, AND ORIGINAL RECORD (IF KNOWN)

No previous record of corner monumentation on file.  
Found a steel fence post which bears South, 4.0 ft.

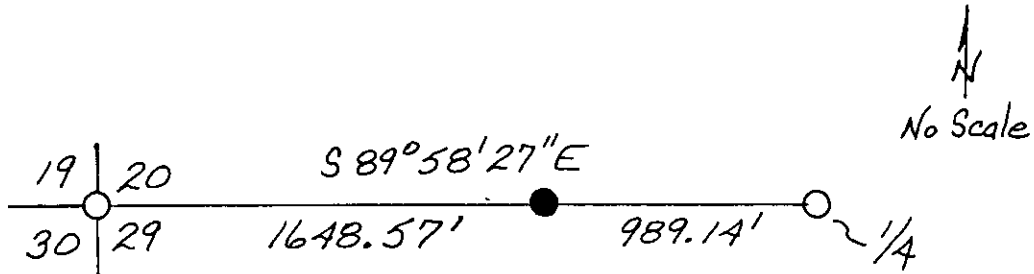
DESCRIPTION OF MONUMENT AND ACCESSORIES ESTABLISHED  
TO PERPETUATE THE ORIGINAL LOCATION OF THIS CORNER:

Date of work: 6/17/80

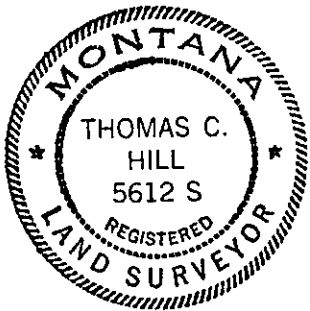
Set a 2 1/2" X 30" alum. pipe 26" in the ground with a collar of stone,  
cap is marked as shown:  
A 6" western larch bears S 24° E, 4.4 FT. marked: 1/256 S20 BT.  
A 10" western larch bears N 33° W, 25.0 FT. marked: x BT.  
A location poster attached to a 5" larch bears S 76° E, 16.2 FT.



SKETCH, WITH COURSE AND DISTANCE TO ADJACENT CORNERS IF DETERMINED IN THIS SURVEY.  
(MAY SKETCH OR PASTE REPRODUCTION ON REVERSE SIDE.)



Surveyor's Seal



I, Anthony J. Bachman  
certify that the information shown herein is true and correct.

Anthony J. Bachman  
Signature of Ground Party Chief  
Thomas C. Hill

I, \_\_\_\_\_  
certify that I have carefully performed or reviewed the work done on the diagrammed corner as reported on this recordation form and approve the same.

Thomas C. Hill  
Signature of Surveyor

DIAGRAM OF CORNER:

N. T35N R25W  
1 WE-W 1/256

SEC 20

SEC 29

■ = Corner recorded on the sheet

5612-S  
Registration Number

Office of Clerk and Recorder, County of Lincoln

This "corner record" was filed for record on the 15th day of December, 1980, was noted on the cross-index plat and is assigned page No. 949, in book No. 1

Kenneth L. Vaughan by Betty Lee  
County Official Deputy

Cross Index No. R-6 T. 35N R. 25W Mer.

