

CERTIFIED LAND CORNER RECORDATION
(REFERENCE FSM 7153.53)

DESCRIPTION OF CORNER EVIDENCE FOUND, AND ORIGINAL RECORD (IF KNOWN)

No previous record of monumentation on file.

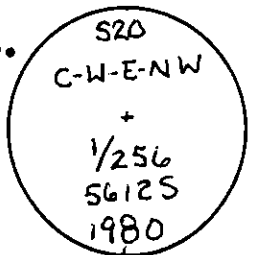
Found a steel fence post which bears N44° W, 21.5 ft.

DESCRIPTION OF MONUMENT AND ACCESSORIES ESTABLISHED
TO PERPETUATE THE ORIGINAL LOCATION OF THIS CORNER:

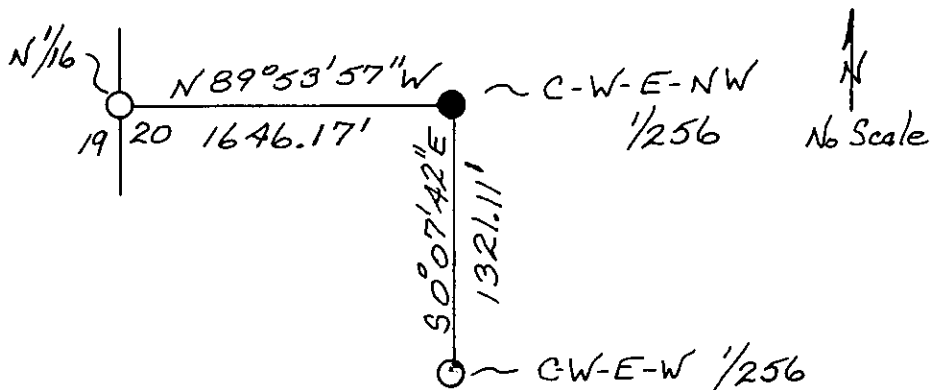
Date of work: 6/12/80

Set a 2 1/2"x30" aluminum pipe 24" in ground. Collar of stone. Cap marked as shown.

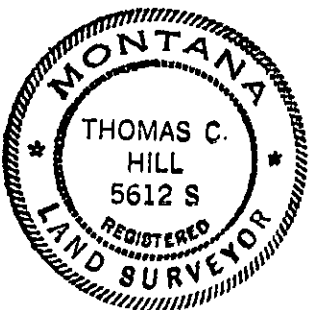
From which: A 9" douglas fir bears S23°W., 6.4 ft. Marked: XBT
A 13" douglas fir bears N29°E., 40.6 ft. Marked: 1/256 S20BT.
Attached location poster to a 22" fir which bears N18 W., 29.1 ft.



SKETCH, WITH COURSE AND DISTANCE TO ADJACENT CORNERS IF DETERMINED IN THIS SURVEY.
(MAY SKETCH OR PASTE REPRODUCTION ON REVERSE SIDE.)



Surveyor's Seal



I, Anthony J. Bachman
certify that the information shown herein is true and correct.

Anthony J. Bachman
Signature of Ground Party Chief

I, Thomas C. Hill
certify that I have carefully performed or reviewed the work done on the diagrammed corner as reported on this recordation form and approve the same.

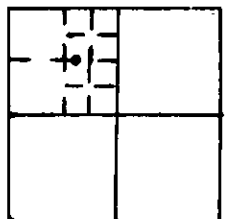
Thomas C. Hill
Signature of Surveyor

5612-S
Registration Number

DIAGRAM OF CORNER:

N. T 35N R 25W
1/256 C-W-E-NW 1/256

SEC 20



● = Corner recorded on the sheet

Office of Clerk and Recorder, County of Lincoln

This "corner record" was filed for record on the 15th day of December 1980, was noted on the cross-index plat and is assigned page No. 948, in book No. 1

Blair L. Trougher, Jr.
County Official

Cross Index No. 0-6 T. 35N R. 25W Mer.

1911

1911

1911

1911

1911

1911

1911

1911

1911

1911

1911

1911