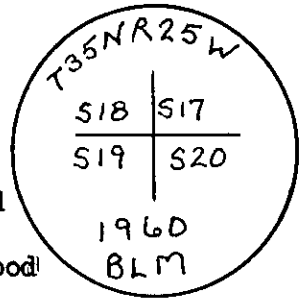


CERTIFIED LAND CORNER RECORDATION
(REFERENCE FSM 7153.53)

DESCRIPTION OF CORNER EVIDENCE FOUND, AND ORIGINAL RECORD (IF KNOWN)

Found a 2 1/2" B.L.M. brass cap approx. 2" above ground marked as shown. Mound of stone approx. 1.5 ft. west of corner.

From which: A 10" fir bears S58°E, 17.7ft., healed face, alive and in good condition.
A 7" fir bears N64°E, 28.9 ft., healed face, alive and in good condition.
An 11" fir bears N30°W, 32.6 ft., healed face, alive and in good condition.
A 12" Larch bears S43°W, 38.3 ft., healed face, alive and in good condition.

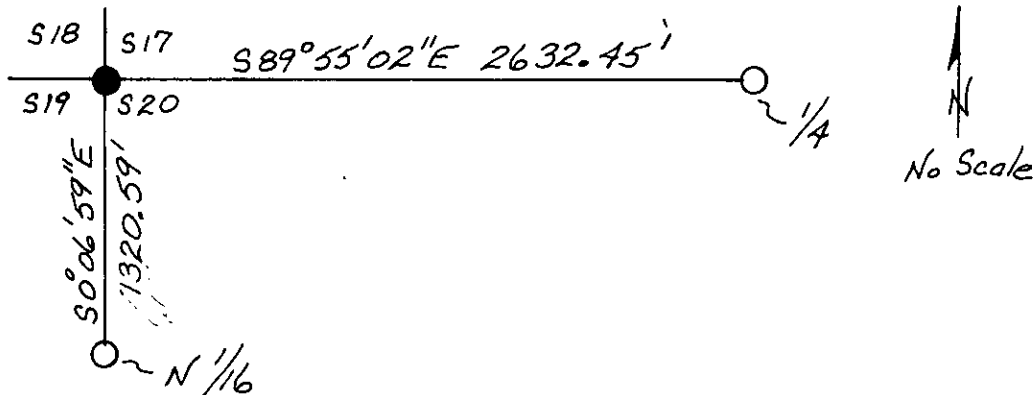


DESCRIPTION OF MONUMENT AND ACCESSORIES ESTABLISHED TO PERPETUATE THE ORIGINAL LOCATION OF THIS CORNER:

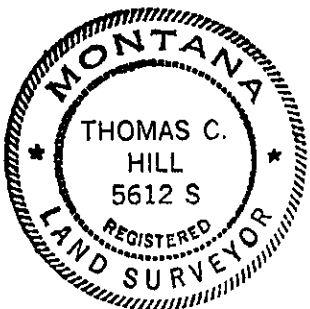
Date of work: 6/16/80

Painted red bands around Bearing Trees.

SKETCH, WITH COURSE AND DISTANCE TO ADJACENT CORNERS IF DETERMINED IN THIS SURVEY.
(MAY SKETCH OR PASTE REPRODUCTION ON REVERSE SIDE.)



Surveyor's Seal



I, Anthony J. Bachman
certify that the information shown herein is true and correct.

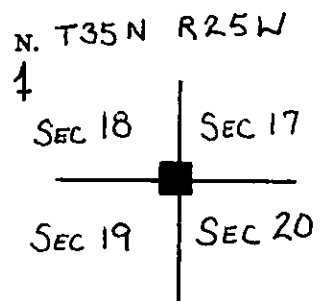
Anthony J. Bachman
Signature of Ground Party Chief

I, Thomas C. Hill
certify that I have carefully performed or reviewed the work done on the diagrammed corner as reported on this recordation form and approve the same.

Thomas C. Hill
Signature of Surveyor

5612-S
Registration Number

DIAGRAM OF CORNER:



■ = Corner recorded on the sheet

Office of Clerk and Recorder, County of Lincoln
This "corner record" was filed for record on the 15th day of December 1980, was noted on the cross-index plat and is assigned page No. 946, in book No. 1
Clarence J. Taugher, Jr. County Official
Cross Index No. N-5 T. 35N R. 25W Mer.

1. *Phragmites* (common)

[illegible]

1. *Chlorophyll a* (Chl *a*)

1. *Chlorophyll a* and *Chlorophyll b* were determined by the method of Lichtenthal and Whistler (1973). The total chlorophyll content was determined by the method of Arar and Cook (1977). The carotenoid content was determined by the method of Lichtenthal and Whistler (1973). The total carotenoid content was determined by the method of Arar and Cook (1977). The total carotenoid content was determined by the method of Arar and Cook (1977).

1. *Journal of the American Medical Association*, 1990; 263: 1025-1028.

[illegible]

4. $\frac{1}{2} \times \frac{1}{2} = \frac{1}{4}$

1. The first group of people who are not in the labor force are those who are not in the labor force because they are not in the labor force.

2000

Journal of Management Education 30(6)p.789-804

—

•

1

.

1. *Journal of the American Medical Association*, 1990; 263: 1025-1028.

1. *Introduction*

100

3 =

1.