

INSTRUCTIONS

1. Original and/or subsequent record used to evaluate the corner position.
2. Description of evidence found, note discrepancies in the record, state method of establishing lost or obliterated corners.
3. Description of monument and accessories set to perpetuate the corner position.
4. Sketch of corner, show all pertinent data which can best be shown in a sketch example, corner marking, topography ties, position of accessories, etc.
5. Certification must be signed and sealed by Land Surveyor registered in the State of Montana.
6. Fill in Cross Index & Section Diagram at bottom of sheet.

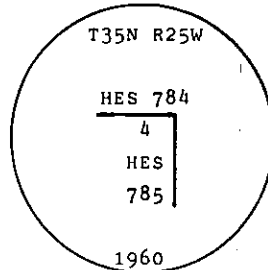
CERTIFIED CORNER RECORDATION

Corner 4 of HES 785 T. 35 N. R. 25 W. P.M.M. Lincoln County

I. 1917 H.E.S. original record by R. E. Maurer: "Cor. No. 4 of this survey, as follows:

Set for Cor No. 4, a small stone, marked with a cross (X), under a limestone 24x8x5 ins. 14 ins. in the ground, marked 4 H.E.S. 785 on the SW. face and a cross (X) on top for the exact corner point. From which: Two bearing trees. A mound of earth 4 ft. base, 2 ft. high, SW. of corner.

1960 B.L.M. Resurvey by D. Cunningham: "Cor. No. 4 of H.E.S. No. 785; monumented with a limestone, 24x8x5 ins., set and marked as described in the official record and witnessed by the remains of the original bearing trees. At corner point set an iron post, 30 ins. long, 2 1/2 ins. diam., 26 ins. in the ground, in concrete, with brass cap mkd.



from which

The original bearing tree:

A pine, 10 ins. diam., bears S.84° 22' W., 20 lks. dist., mkd. X 4 HES 785 BT. (Original)

The new bearing tree:

A larch, 7 ins. diam., bears N.24° E., 30 lks. dist., mkd. 4 HES 785 BT.

A larch, 10 ins. diam., bears S.19-1/2° E., 18 lks. dist., mkd. 4 HES 785 BT.

Bury the original stone alongside and raise a mound of stone, 3 ft. base, 2 ft. high, SW. of the iron post."

II. Found a BLM brass cap, 3 1/4 ins. diam., 3 ins. out of the ground, with a rock mound 1 ft. SW. of corner, mkd. as shown above.

From which:

A lodgepole pine, 12 ins. diam, bears S.84° W., 13.1 ft. (19.8 lks.) dist., visible scribing 4 HES 785 (Original)

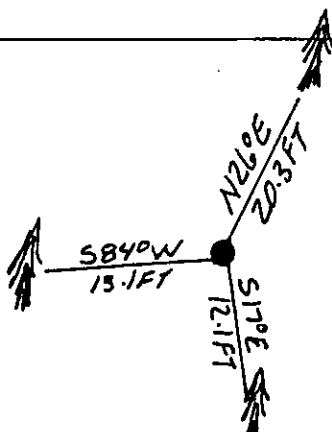
A larch, 11 ins. diam., bears N.26° E., 20.3 ft. (30.8 lks.) dist., healed face. (1960: N.24° E.)

A larch, 14 ins. diam., bears S.17° E., 12.1 ft. (18.3 lks.) dist., healed face. (1960: S.19-1/2° E.)

III. Painted red bands around the bearing trees and attached "Land Survey Monument" and "Bearing Tree" signs.

Set a 6 ft. galvanized steel guard post with "Land Survey Marker" and "Property Boundary" decals, East, 3 ft. dist from corner.

Magnetic declination: 20° East



SKETCH OF CORNER

CERTIFICATION

I, Tom Hommel
certify the information shown herein is true and correct.

Thomas M. Hommel
Signature Ground Party Chief

I, Alvah F. Hughes
certify that this Corner Record correctly represents work performed by me or under my direction in compliance with the "Corner Recordation Act" (70-22-101, et seq., M.C.A.)

Alvah F. Hughes
Signature of Surveyor, Registered

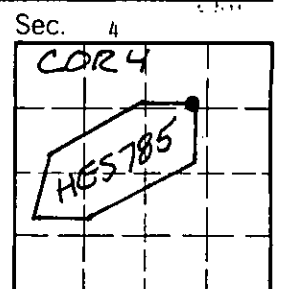
Date: 11/26/91 Reg. No. 7322 LS

Employer: U.S. FOREST SERVICE

Office of Clerk and Recorder, County of Lincoln. This "corner record" was filed for record on 4-21-92 was noted on the cross-index plat and is assigned page No. 5028, in book No. Coral M. Cummings

County Official ✓

Cross Index No. 4 HES 785 T. 35 N R. 25 W PMM



• - corner this sheet

