

1. Original and/or subsection record used to evaluate the corner position.
2. Description of evidence found, note discrepancies in the record, state method of establishing or obliterated corners.
3. Description of monument and accessories set to perpetuate the corner position.
4. Sketch of corner, show all pertinent data which can best be shown in a sketch example, corner marking, topography lies, position of accessories, etc.
5. Certification must be signed and sealed by Land Surveyor registered in the State of Montana.
6. Fill in Cross Index & Section Diagram at bottom of sheet.

CERTIFIED CORNER RECORDATION

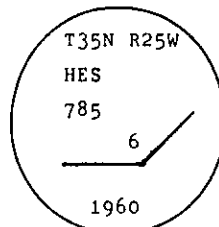
Corner 6 of HES 785 T. 35 N. R. 25 W. P.M.M. Lincoln County

I. 1917 H.E.S. original record by R. E. Maurer: " Cor. No. 6 of this survey, as follows:

Set for Cor No. 6, a small stone, marked with a cross (X), under a slate stone 26x14x7 ins. 16 ins. in the ground, marked 6 H.E.S. 785 on the NE. face and a cross (X) on top for the exact corner point.

From which:" Two bearing trees. A mound of earth 4 ft. base, 2 ft. high, NE. of corner.

1960 B.L.M. Resurvey by D. Cunningham: " Cor. No. 6 of H.E.S. No. 785, monumented with a slate stone, 26x14x7 ins., set 16 ins. in the ground, mkd. X 6 HES 785 on NW face and witnessed by the remains of the original bearing trees. At corner point set an iron post, 30 ins. long, 2 1/2 ins. diam., 26 ins. in the ground, with brass cap mkd.:



from which

The original bearing trees:

A fir, 10 ins. diam., bears N.43-3/4° E., 26 lks. dist., mkd. X 6 HES 785 BT.

(Record: N.52° 40' E., 18 lks. dist.)

A larch stump, 9 ins. diam., bears N. 74° 05' W., 18 lks. dist., mkd. X 6 HES 785 BT.

(Record: N.74° 05' W., 26 lks.)

The new bearing trees:

A larch, 8 ins. diam., bears N.72° E., 51 lks. dist., mkd. 6 HES 785 BT.

A fir, 7 ins. diam., bears S.15-1/4° E., 39 lks. dist., mkd. 6 HES 785 BT.

Bury the original stone alongside and raise a mound of stone, 3 ft. base, 2 ft. high, NW. of the iron post."

II. Found a BLM brass cap, 3 1/4 ins. diam., flush with the ground, with a rock mound 1 ft. West. of corner mkd. as shown above.

From which:

A fir, 16 ins. diam, bears N.53° E., 17.7 ft. (26.8 lks.) dist., visible scribing.

A larch, 13 ins. diam., bears N.72° E., 33.7 ft. (51.1 lks.) dist., healed face. (1960)

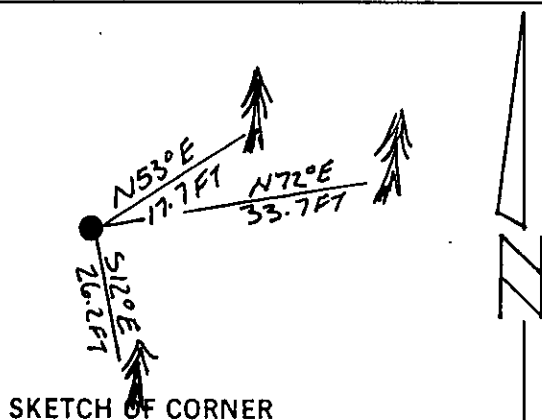
A fir, 11 ins. diam., bears S.12° E., 26.2 ft. (39.7 lks.) dist., healed face.

(1960: S.15-1/4° E., 39 lks. dist.)

III. Painted red bands around the bearing trees and attached "Land Survey Monument" and "Bearing Tree" signs.

Set a 6 ft. galvanized steel guard post with "Land Survey Marker" and "Property Boundary" decals, N.46° E., 4 ft. dist. from corner.

Magnetic declination: 20° East



SKETCH OF CORNER

CERTIFICATION

I, Thomas M. Hommel
certify the information shown herein is true and correct.

Thomas M. Hommel
Signature Ground Party Chief

I, Alvah F. Hughes
certify that this Corner Record correctly represents work performed by me or under my direction in compliance with the "Corner Recordation Act" (70-22-101, et seq., M.C.A.)

Alvah F. Hughes
Signature of Surveyor & Seal

Date: 11/26/91 Reg. No. 7322 LS

Employer: U.S. FOREST SERVICE

Office of Clerk and Recorder, County of Lincoln This "corner

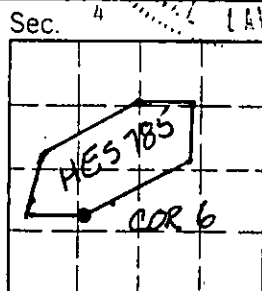
record" was filed for record on 4-21-92

was noted on the cross-index plat and is assigned page No. 5026, in

book No.

Coral M. Williams
County Official

Cross Index No. 6 HES 785 T. 35 N. R. 25 W. P.M.M.



• corner this sheet

