

INSTRUCTIONS

1. Original and/or subsequent record used to evaluate the corner position.
2. Description of evidence found, note discrepancies in the record, state method of establishing lost or obliterated corners.
3. Description of monument and accessories set to perpetuate the corner position.
4. Sketch of corner, show all pertinent data which can best be shown in a sketch example, corner marking, topography ties, position of accessories, etc.
5. Certification must be signed and sealed by Land Surveyor registered in the State of Montana.
6. Fill in Cross Index & Section Diagram at bottom of sheet.

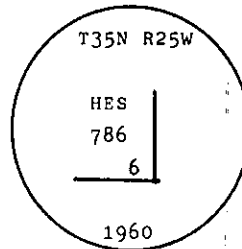
CERTIFIED CORNER RECORDATION

Corner 6 of HES 786 T. 35 N. R. 25 W. P.M.M. Lincoln County

I. 1917 H.E.S. original record by R. E. Maurer: " Cor. No. 6 of this survey, as follows:

Set for Cor No. 6 a small stone, marked with a cross (X) under a slate stone 26x14x5 ins., 16 ins. in the ground, marked 6 H.E.S. 786 on the NW. face and a cross on top for the exact corner point. From which: Mkd. two bearing trees and raised a mound of stone 4 ft. base, 2 ft. high, NW. of corner.

1960 B.L.M. Resurvey by D. Cunningham: " Cor. No. 6 of H.E.S. No. 786, determined from the original bearing trees. At corner point set an iron post, 30 ins. long, 2 1/2 ins. diam., 26 ins. in the ground, in concrete, with brass cap mkd.



from which

The original bearing trees:

A larch, 16 ins. diam., bears N. $66^{\circ}35'$ E., 27 lks. dist., visible marks HES. (Record)

A larch, 7 ins. diam., bears N. $7^{\circ}06'$ W., 37 lks. dist., mkd. X HES 786 BT. (Record)

Raise a mound of stone, 3 ft. base, 2 ft. high, NW. of the iron post."

II. Found a BLM brass cap 3 1/4 ins. diam., 31 ins. below ground. Brass cap marked as shown above.

From which:

A larch snag, bears N 7° E., 29.5 ft. (44.7 lks.) dist., dead and down, 6 HES 786 visible.

No evidence of a stump or stump hole at N 7° W, 24.4 ft. (37.0 lks)

III. Established two new bearing trees:

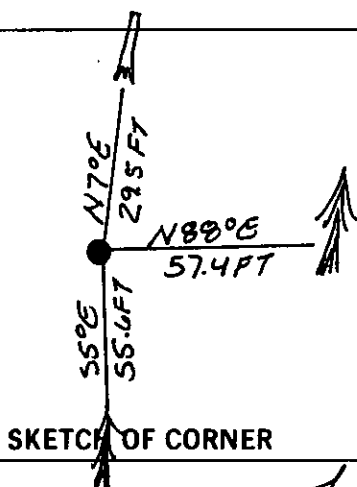
A larch, 13 ins. diam., bears S 5° E., 55.6 ft. (84.2 lks.) dist., mkd. 6 HES 786 BT.

A spruce, 8 ins. diam., bears N 88° E., 57.4 ft. (87.0 lks.) dist., mkd. 6 HES 786 BT.

Painted red bands around the bearing trees and attached "Land Survey Monument" and "Bearing Tree" signs.

Set a 6 ft. galvanized steel guard post with "Land Survey Marker" and "Property Boundary" decals, West, 3 ft. dist from corner.

Magnetic declination: 20° East



SKETCH OF CORNER

CERTIFICATION

I, Tom Hommel

certify the information herein is true and correct.

Thomas M. Hommel
Signature Ground Party Chief

I, Alvah F. Hughes

certify that this Corner Record correctly represents work performed by me or under my direction in compliance with the Montana Recordation Act" (70-22-101, et seq., M.C.A.)

Alvah F. Hughes
Signature of Surveyor & Seal

Date: 11/26/91 Reg. No. 7322 L.S.

Employer: U.S. FOREST SERVICE

Office of Clerk and Recorder, County of Lincoln. This "corner

record" was filed for record on 4-21-92

was noted on the cross-index plat and is assigned page No. 5022, in

book No. Coral M. Cummings

County Official

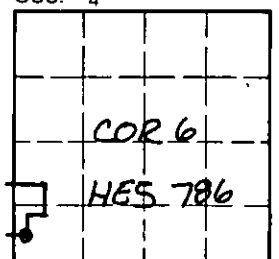
6 HES 786

35 N

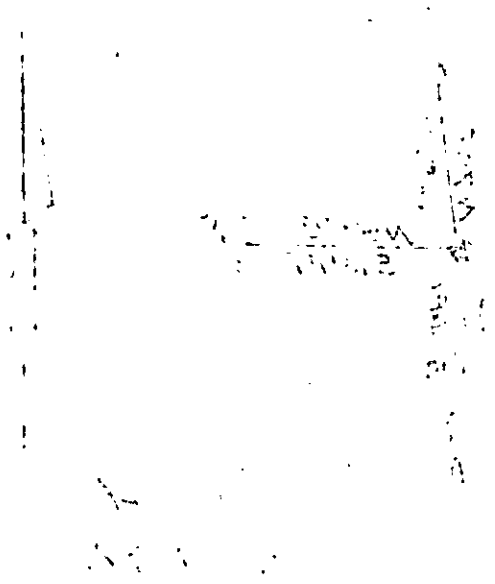
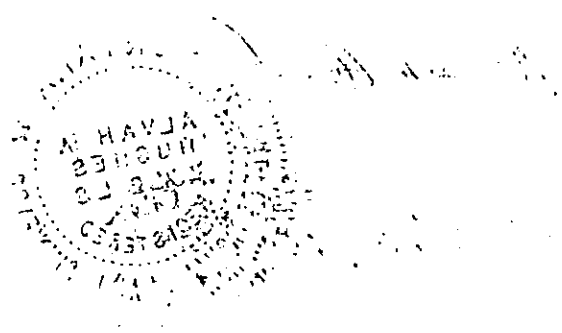
25 W

Cross Index No. T. R. PMM

Sec. 4



• - corner this sheet



APR 13 1964