

1. Original and/or subsequent record used to evaluate the corner position.
2. Description of evidence found, and note discrepancies in the record, state method of establishing lost or obliterated corners.
3. Description of monument and accessories set to perpetuate the corner position.
4. Sketch of corner, show all pertinent data which can best be shown in a sketch example, corner marking, topography (ties, position of accessories, etc.
5. Certification must be signed and sealed by Land Surveyor registered in the State of Montana.
6. Fill in Cross Index & Section Diagram at bottom of sheet.

CERTIFIED CORNER RECORDATION

Corner 3 of HES 786 T. 35 N. R. 25 W. P.M.M. Lincoln County

I. 1917 H.E.S. original record by R. E. Maurer:

Cor. No. 3 of this survey as follows: Set a small stone, marked with a cross (X), under a slate stone, 28x9x6 ins., 18 ins. in the ground, marked 3 HES 786 on the SW. face, and a cross (X) on top for the exact corner point.

From which:

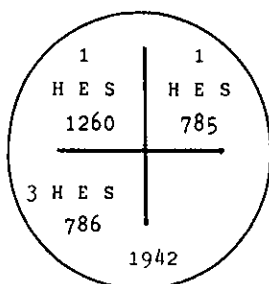
Two bearing trees and a mound of stone, 4 ft. base, 2 ft. high, SW of corner.

"Beginning with point for listing Cor. No. 1, identical with Cor. No. 3 of H.E.S. No. 786, which is a slate stone, 10x9x6 ins. above ground, as set by me June 12, 1917. I adopt this corner for Cor. No. 1 of this survey and mark it 1 H.E.S. 785 on the NE. face.

From which:

The two original bearing trees and a mound of stone, 4 ft. base, 2 ft. high, NE of the cor.

1942 H.E.S. original record by A. O. Modlin: "Beginning with Corner No. 1 of HES No. 785, heretofore described, as this corner stone is in poor condition I destroy the stone, and in its place establish Corner No. 1 of this survey as follows: Place a limestone 5x4x3 ins., marked with a cross (X) under an iron post, 3 ft. long, 2 ins. diam., 26 ins in the ground, with a brass cap marked as follows:



The point on the cap is the exact corner point, from which:

A cross (X) on a tamarack, 10 ins. diam., bears S. 48° 07' E., 85 lks. dist. (New bearing tree)

A cross (X) on a tamarack, 8 ins. diam., bears S. 77° 45' E., 116 lks. dist. (New bearing tree)

each blazed and scribed 1 HES 1260 B.T.

Raise a mound of stone 4 ft. base, 2 ft. high, NW. of corner."

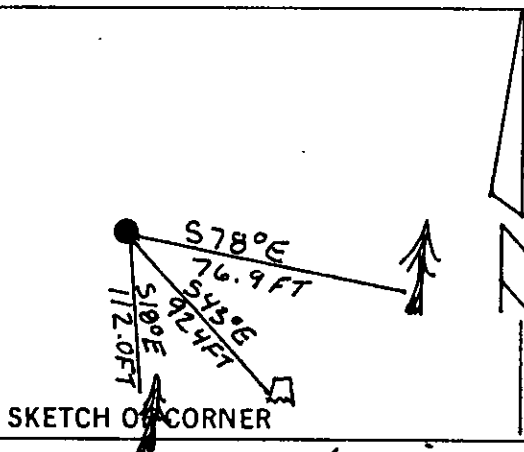
II. Found a U.S.D.A. brass cap 2 1/2 ins. diam. on 2 ins. diam iron pipe, 8 ins. above ground, with rock collar. Brass cap mkd. as shown above, from which:

A larch, 16 ins. diam., bears S78° E., 76.9 ft. (116.5 lks.) dist., 60 visible. (1942)

A larch stump, bears S43° E., 92.4 ft. (140.0 lks.) dist., 1 HES 1260 B.T. visible. (No record)

A larch, 11 ins. diam., bears S18° E., 112.0 ft. (169.7 lks.) dist., HES 1260 visible. (No record)

III. Painted red bands around the bearing trees and attached "Land Survey Monument" and "Bearing Tree" signs. Set a 6 ft. galvanized steel guard post with "Land Survey Marker" and "Property Boundary" decals, N60° W 26.9 ft. dist from corner. Magnetic declination: 20° East



SKETCH OF CORNER

CERTIFICATION

I, Thomas M. Hommel

certify the information shown herein is true and correct.

Thomas M. Hommel
Signature Ground Party Chief

I, Alvah F. Hughes

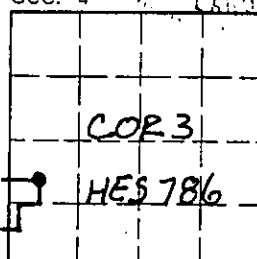
certify that this Corner Record correctly represents work performed by me or under my direction in compliance with the "Corner Recordation Act" (70-22-101 et seq., M.C.A.)

Alvah F. Hughes
Signature of Surveyor & Seal

Date: 11/26/91 Reg. No. 7322 ES

Employer: U.S. FOREST SERVICE

Sec. 4



Office of Clerk and Recorder, County of Lincoln. This "corner

record" was filed for record on 4-21-92

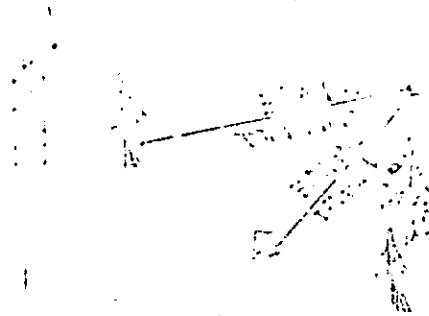
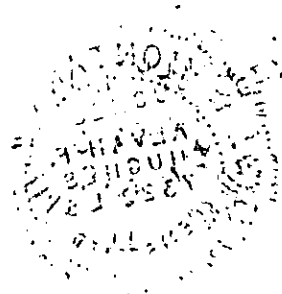
was noted on the cross-index plat and is assigned page No. 5019, in

book No. _____

Coral M. Cummings
County Official

Cross Index No. 3 HES 786 T. 35 N R. 25 W P.M.M.

• - corner this sheet



1970
JAN 1