

## INSTRUCTIONS

1. Original and/or subsequent record used to evaluate the corner position.
2. Description of evidence found, note discrepancies in the record, state method of establishing lost or obliterated corners.
3. Description of monument and accessories set to perpetuate the corner position.
4. Sketch of corner, show all pertinent data which can best be shown in a sketch example, corner marking, topography ties, position of accessories, etc.
5. Certification must be signed and sealed by Land Surveyor registered in the State of Montana.
6. Fill in Cross Index & Section Diagram at bottom of sheet.

## CERTIFIED CORNER RECORDATION

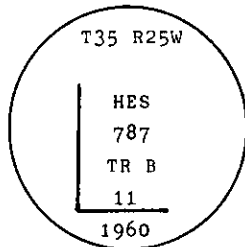
Corner 11 of HES 787 T. 35 N. R. 25 W. P.M.M. Lincoln County

- I. 1917 H.E.S. original record by R. E. Maurer: " Cor. No. 11 of this survey, as follows:  
Set for Cor No. 11 a small stone, marked with a cross (X) under a sandstone, 24x6x6 ins. 14 ins.  
in the ground, marked 11 H.E.S. 787 on the NE. face and a cross on top for the exact corner point,

from which:"

Two bearing trees and a mound of earth 4 ft. base, 2 ft. high, NE. of corner.

1960 B.L.M. Resurvey by D. Cunningham: " Cor. No. 11 of Tract B, H.E.S. No. 787, monumented with a sandstone, 14 x 10 x 6 ins., set and marked as described in the official record and witnessed by the original bearing trees. At the corner point set an iron post, 30 ins. long, 2 1/2 ins. diam., 26 ins. in the ground, in concrete, with brass cap mkd.



from which

The original bearing trees:

A fir, 16 ins. diam., bears N. 2 1/4° E., 28 lks. dist., markings overgrown.  
(Record: S. 4° 14' E., 28 lks.)

A fir, 11 ins. diam., bears S 50° 42' W., 2 lks. dist., mkd. 11 HES 787 BT. (Record)

The new bearing tree:

A fir, 8 ins. diam., bears N 8 1/4° W., 48 lks. dist., mkd. 11 HES 787 BT.

Bury the original stone alongside and raise a mound of stone, 3 ft. base, 2 ft. high, NE. of the iron post."

- II. Found a B.L.M. brass cap on 2 1/2 ins. diam. iron pipe, 2 ins. above ground with rock mound, 1 ft. dist. NE of corner, mkd. as shown above.

From which:

A fir, 25 ins. diam, bears N4° E., 19.3 ft. (29.2 lks.) dist., healed face. (Original)

A fir, 13 ins. diam., bears S51° W., 1.3 ft. (2 lks.) dist., healed face. (Original)

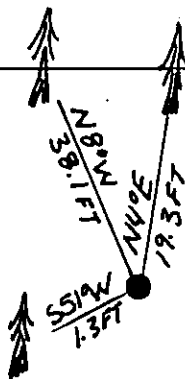
A fir, 13 ins. diam., bears N8° W., 38.1 ft. (57.7 lks.) dist., healed face. (1960)

- III. Establish:

Painted red bands around the bearing trees and attached "Land Survey Monument" and "Bearing Tree" signs.

Set a 6 ft. galvanized steel guard post with "Land Survey Marker" and "Property Boundary" decals, North, 3 ft. dist from corner.

Magnetic declination: 20° East



SKETCH OF CORNER

## CERTIFICATION

I, Tom Hommel  
certify the information shown herein is true and correct.

Tom Hommel  
Signature Ground Party Chief

I, Alvah F. Hughes  
certify that this Corner Record correctly represents work performed by me or under my direction in compliance with the Corner Recordation Act" (70-22-101, et seq., M.C.A.)

Alvah F. Hughes  
Signature of Surveyor & Seal

Date: 11/26/91 Reg. No. 7322 LS

Employer: U.S. FOREST SERVICE

Office of Clerk and Recorder, County of Lincoln. This "corner record" was filed for record on 4-21-92 was noted on the cross-index plat and is assigned page No. 5015, in book No. Coral M. Cummings

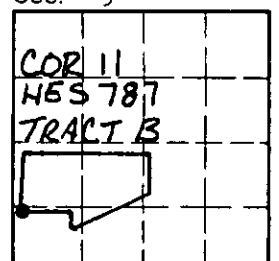
County Official

11 HES 787

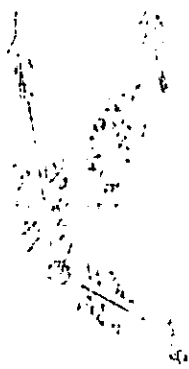
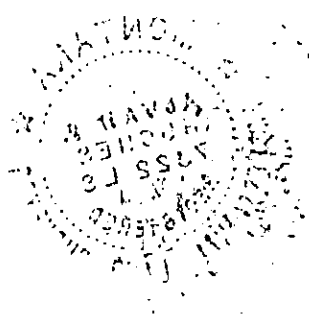
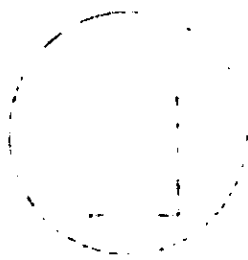
35 N 25 W

Cross Index No. T. R. PMM

Sec. 5



• - corner this sheet



1911  
JAN 13