

## INSTRUCTIONS

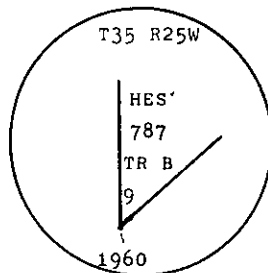
1. Original and/or subsequent record used to evaluate the corner position.
2. Description of evidence found, note discrepancies in the record, state method of establishing lost or obliterated corners.
3. Description of monument and accessories set to perpetuate the corner position.
4. Sketch of corner, show all pertinent data which can best be shown in a sketch example, corner marking, topography ties, position of accessories, etc.
5. Certification must be signed and sealed by Land Surveyor registered in the State of Montana.
6. Fill in Cross Index & Section Diagram at bottom of sheet.

## CERTIFIED CORNER RECORDATION

Corner 9 of HES 787 T. 35 N. R. 25 W. Lincoln County

- I. 1917 H.E.S. original record by R. E. Maurer: " Cor. No. 9 of this survey, as follows:  
Set for Cor No. 9 a small stone, marked with a cross (X) under a limestone, 24x8x5 ins. 14 ins.  
in the ground, marked 9 H.E.S. 787 on the NE. face and a cross on top for the exact corner point.  
From which:" Two bearing trees and a mound of earth 4 ft. base, 2 ft. high, NE. of corner.

1960 B.L.M. Resurvey by D. Cunningham: " Cor. No. 9 of Tract B, H.E.S. No. 787, monumented with a limestone, 20 x 10 x 8 ins., set and marked as described in the official record and witnessed by one of the original bearing trees. At the corner point set an iron post, 30 ins. long, 2 1/2 ins. diam., 24 ins. in the ground, in concrete, with brass cap mkd.



from which

The original bearing tree:

A spruce, 15 ins. diam., bears S 51° 32' E., 15 lks. dist., mkd. X 9 HES 787 BT.  
(Record)

The new bearing trees:

A spruce, 7 ins. diam., bears S. 48° W., 26 lks. dist., mkd. 9 HES 787 BT.  
A fir, 6 ins. diam., bears N. 52° W., 52 lks. dist., mkd. 9 HES 787 BT.

Bury the original stone along side and raise a mound of stone, 3 ft. base, 2 ft. high, NE. of the iron post."

- II. Found a B.L.M. brass cap on 2 1/2 ins. diam. iron pipe, 2 ins. above ground with rock mound, 1 ft. dist. North of corner mkd. as shown above.

From which:

A spruce, 10 ins. diam, bears S52° W., 16.7 ft. (25.3 lks.) dist., healed face.  
(1960: S48° W., 26 lks.)

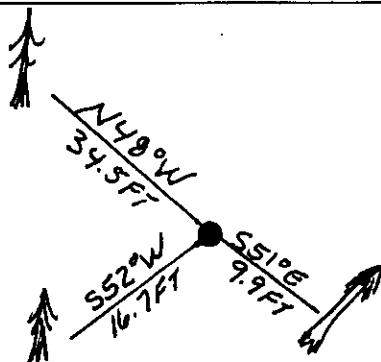
A fir, 13 ins. diam., bears N48° W., 34.5 ft. (52.3 lks.) dist., healed face.  
(1960: N52° W., 52 lks.)

A down spruce, bears S51° E., 9.9 ft. (15.0 lks.) dist., healed face. (Original)

- III. Establish:

Painted red bands around the bearing trees and attached "Land Survey Monument" and "Bearing Tree" signs.

Set a 6 ft. galvanized steel guard post with "Land Survey Marker" and "Property Boundary" decals, N65° E, 3 ft. dist from corner. Magnetic declination: 20° East



SKETCH OF CORNER

## CERTIFICATION

I, Tom Hommel  
certify the information shown herein is true and correct.  
Thomas M. Hommel  
Signature Ground Party Chief

I, Alvah F. Hughes  
certify that this Corner Record correctly represents work performed by me or under my direction in compliance with the "Corner Recordation Act" (70-22-01, et seq., M.C.A.)  
Alvah F. Hughes  
Signature of Surveyor & Seal

Date: 11/26/91 Reg. No. 7322 LS

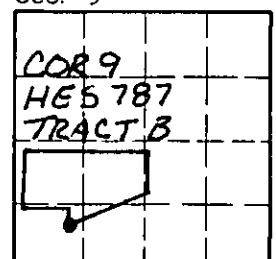
Employer: U.S. FOREST SERVICE

Office of Clerk and Recorder, County of Lincoln. This "corner record" was filed for record on 11-21-92 was noted on the cross-index plat and is assigned page No. 5013, in book No. Coral M. Cunningham

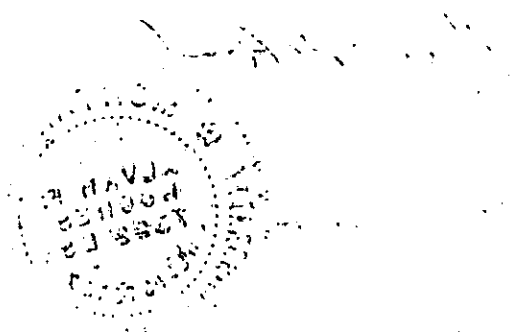
County Official V

9 HES 787 35 N 25 W  
Cross Index No. T. R. PMM

Sec. 5



• - corner this sheet



Handwritten text, possibly a date or initials, located below the postmark.

