

1. Original and/or subsequent record used to evaluate the corner position.
2. Description of evidence found, note discrepancies in the record, state method of establishing or obliterated corners.
3. Description of monument and accessories set to perpetuate the corner position.
4. Sketch of corner, show all pertinent data which can best be shown in a sketch example, corner marking, topography lies, position of accessories, etc.
5. Certification must be signed and sealed by Land Surveyor registered in the State of Montana.
6. Fill in Cross Index & Section Diagram at bottom of sheet.

CERTIFIED CORNER RECORDATION

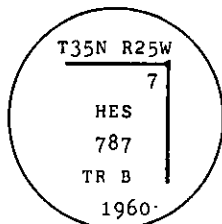
Corner 7 of HES 787 T. 35 N. R. 25 W. P.M.M. Lincoln County

I. 1917 H.E.S. original record by R. E. Maurer: " Cor. No. 7 of this survey, as follows:

Set for Cor No. 7 a small stone, marked with a cross (X) under a sandstone 24x16x6 ins. 14 ins. in the ground, marked 7 H.E.S. 787 on the SW. face and a cross on top for the exact corner point. From which:"

Two bearing trees and a mound of earth 4 ft. base, 2 ft. high, SW. of corner.

1960 B.L.M. Resurvey by D. Cunningham: " Cor. No. 7 of Tract B, H.E.S. No. 787, monumented with a sandstone, 18 x 15 x 6 ins., set and marked as described in the official record and witnessed by the original bearing trees. At the corner point set an iron post, 30 ins. long, 2 1/2 ins. diam., 26 ins. in the ground, in concrete, with brass cap mkd.



from which

The remains of the original bearing trees:

A larch stump, 9 ins. diam., bears N 81° E., 47 lks. dist., visible marks: BT.

(Record: N. 89° 13' E., 47 lks.)

A fir, 20 ins. diam., bears N 4° 25' W., 132 lks. dist., markings overgrown.

(Record)

The new bearing trees:

A larch, 9 ins. diam., bears N. 54 1/4° E., 44 lks. dist., mkd. 7 HES 787 BT.

A fir, 6 ins. diam., bears S. 33 1/4° E., 71 lks. dist., mkd. 7 HES 787 BT.

Bury the original stone alongside and raise a mound of stone, 3 ft. base, 2 ft. high, SW. of the iron post."

II. Found a B.L.M. brass cap on 2 1/2 ins. diam. iron pipe, flush with ground, mkd. as shown above, from which:

A larch stump, bears N89° E., 31.0 ft. (47.0 lks.) dist., "B" visible. (Original.)

A fir, 24 ins. diam., bears N4° W., 88.4 ft. (133.9 lks.) dist., healed face. (Original.)

A larch, 17 ins. diam., bears N56° E., 29.3 ft. (44.4 lks.) dist., healed face. (1960)

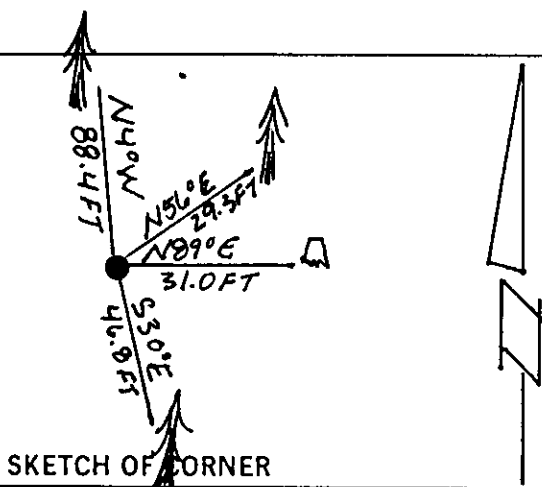
A fir, 11 ins. diam., bears S30° E., 46.8 ft. (70.9 lks.) dist., healed face. (1960)

III. Establish:

Painted red bands around the bearing trees and attached "Land Survey Monument" and "Bearing Tree" signs.

Set a 6 ft. galvanized steel guard post with "Land Survey Marker" and "Property Boundary" decals, West, 3 ft. dist from corner.

Magnetic declination: 20° East



CERTIFICATION

I, Thomas M. Hommel certify the information shown herein is true and correct.

Thomas M. Hommel
Signature Ground Party Chief

I, Alvah F. Hughes certify that this Corner Record correctly represents work performed by me or under my direction in compliance with the "Corner Recordation Act" (70-22-101, et seq. M.C.A.)

Alvah F. Hughes
Signature of Surveyor & Seal

Date: 11/26/91 Reg. No. 7322 LS

Employer: U.S. FOREST SERVICE

Office of Clerk and Recorder, County of Lincoln. This "corner record" was filed for record on 4-21-92

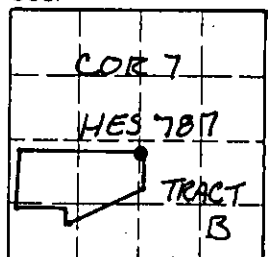
was noted on the cross-index plat and is assigned page No. 5011, in

book No.

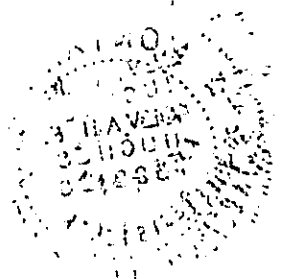
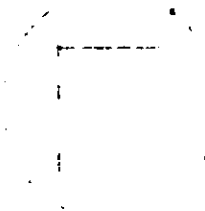
Carol M. C.
County Official

Cross Index No. 7 HES 787 T. 35 N. R. 25 W. P.M.M.

Sec. 5 (A.I.)



• - corner this sheet



ST. LOUIS
MISSOURI
PUBLIC LIBRARY