

INSTRUCTIONS

1. Original and/or subsequent record used to evaluate the corner position.
2. Description of evidence found, note discrepancies in the record, state method of establishing lost or obliterated corners.
3. Description of monument and accessories set to perpetuate the corner position.
4. Sketch of corner, show all pertinent data which can best be shown in a sketch example, corner marking, topography ties, position of accessories, etc.
5. Certification must be signed and sealed by Land Surveyor registered in the State of Montana.
6. Fill in Cross Index & Section Diagram at bottom of sheet.

CERTIFIED CORNER RECORDATION

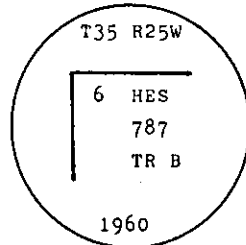
Corner 6 of HES 787 T. 35 N. R. 25 W. P.M.M. Lincoln County

- I. 1917 H.E.S. original record by R. E. Maurer: " Cor. No. 6 of this survey, as follows:
Set for Cor No. 6 a small stone, marked with a cross (X) under a sandstone 24x8x6 ins. 14 ins.
in the ground, marked 6 H.E.S. 787 on the SE. face and a cross on top for the exact corner point.

From which:"

Set two bearing trees and raise a mound of earth 4 ft. base, 2 ft. high, SE. of corner.

1960 B.L.M. Resurvey by D. Cunningham: " Cor. No. 6 of Tract B, H.E.S. No. 787, monumented with a sandstone, 20 x 12 x 8 ins., set and marked as described in the official record and witnessed by the original bearing trees. At the corner point set an iron post, 30 ins. long, 2 1/2 ins. diam., 26 ins. in the ground, in concrete, with brass cap mkd.



from which

The original bearing trees:

A fir, 12 ins. diam., bears S. $83\frac{1}{2}^{\circ}$ E., 125 lks. dist., markings overgrown.

(Record: S. $84^{\circ} 56'$ E., 125 lks.)

A fir, 14 ins diam., bears N. $2\frac{1}{2}^{\circ}$ W., 96 lks. dist., mkd. X 6 HES 787 BT.

(Record: N. $3^{\circ} 35'$ W., 96 lks.)

Bury the original stone along side and rebuild the mound of stone, 3 ft. base, 2 ft. high, SE. of the iron post.

- II. Found a B.L.M. brass cap on 2 1/2 ins. diam. iron pipe, 4 ins. above ground, mkd. as shown above.

from which:

A fir, 17 ins. diam, bears S 82° E., 80.9 ft. (122.6 lks.) dist., healed face.

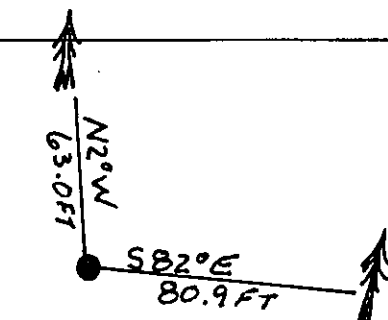
A fir, 20 ins. diam., bears N 2° W, 63.0 ft. (94.5 lks.) dist., HES 787 visible.

- III. Establish:

Painted red bands around the bearing trees and attached "Land Survey Monument" and "Bearing Tree" signs.

Set a 6 ft. galvanized steel guard post with "Land Survey Marker" and "Property Boundary" decals, East, 4 ft. dist from corner.

Magnetic declination: 20° East



SKETCH OF CORNER

CERTIFICATION	
I, <u>Tom Hommel</u>	
certify the information shown herein is true and correct.	
<u>Alvah F. Hughes</u>	
Signature Ground Party Chief	
I, <u>Alvah F. Hughes</u>	
certify that this Corner Record correctly represents work performed by me or under my direction in compliance with the Corner Recordation Act" (70-22-101, et seq., M.C.A.)	
<u>Alvah F. Hughes</u>	
Signature of Surveyor & Seal	
Date: <u>11/26/91</u>	Reg. No. <u>7322 LS</u>
Employer: <u>U.S. FOREST SERVICE</u>	

Office of Clerk and Recorder, County of Lincoln. This "corner record" was filed for record on 4-21-92 was noted on the cross-index plat and is assigned page No. 500 in book No. Coral M. Cummings

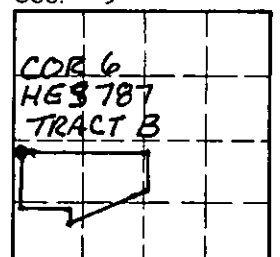
County Official

6 HES 787

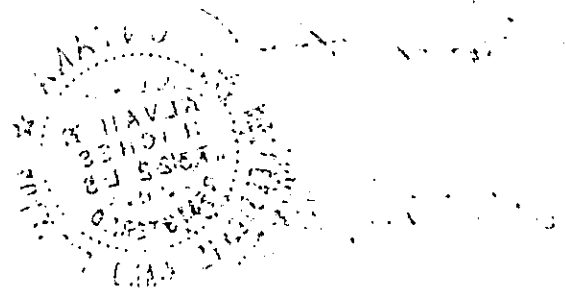
35 N 25 W

Cross Index No. _____ T. _____ R. _____ PMM

Sec. 5



• - corner this sheet



14 FEB 8 1967

