

1. Original and/or subsequent record used to evaluate the corner position.
2. Description of evidence found, note discrepancies in the record, state method of establishing or obliterated corners.
3. Description of monument and accessories set to perpetuate the corner position.
4. Sketch of corner, show all pertinent data which can best be shown in a sketch example, corner marking, topography ties, position of accessories, etc.
5. Certification must be signed and sealed by Land Surveyor registered in the State of Montana.
6. Fill in Cross Index & Section Diagram at bottom of sheet.

CERTIFIED CORNER RECORDATION

Corner 5 of HES 787 T. 35 N. R. 25 W. P.M.M. Lincoln County

I. 1917 H.E.S. original record by R. E. Maurer: " Cor. No. 5 of this survey, as follows:

Set for Cor No.5, a small stone, marked with a cross (X) under a sandstone 24x12x6 ins. 14 ins. in the ground, marked 5 H.E.S. 787 on the E. face and a cross on top for the exact corner point. From which:

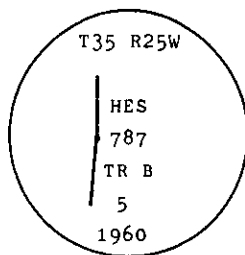
A cross (X) on a fir tree, 5 ins. dia., bears S. 22° 52' E., 38 lks. dist.,

A cross (X) on a fir tree, 7 ins. dia., bears N. 12° 35' W., 16 lks. dist.,

each blazed and scribed 5 H E S 787 B T.

Raise a mound of earth 4 ft. base, 2 ft. high. E. of corner."

1960 B.L.M. Resurvey by D. Cunningham: " Cor. No. 5 of Tract B, H.E.S. No. 787, monumented with a sandstone, 24 x 16 x 6 ins., set and marked as described in the official record and witnessed by the remains of the original bearing trees. At the corner point set an iron post, 30 ins. long, 2 1/2 ins. diam., 26 ins. in the ground, in concrete, with brass cap mkd.



from which

The remains of the original bearing trees:

A fir, 8 ins. diam., bears S. 22° 52' E., 38 lks. dist., mkd. 5 HES BT. (Record.)

A stump hole, bears N 12° 35' W., 16 lks. dist., with fallen log mkd. X 5 HES 787 BT. (Record)

The new bearing trees:

A fir, 9 ins. diam., bears N 40° E., 43 lks. dist., mkd. 5 HES 787 BT.

A fir, 11 ins diam., bears S. 38 1/4° E., 38 lks. dist., mkd. 5 HES 787 BT.

Bury the original stone alongside and rebuild the mound of stone, 3 ft. base, 2 ft. high, E. of the iron post."

II. Found a B.L.M. brass cap on 2 1/2 ins. diam. iron pipe, 4 ins. above ground with rock mound, 2 ft. dist. East of corner, mkd. as shown above, from which:

A fir, 15 ins. diam, bears N40° E., 28.1 ft. (42.6 lks.) dist., healed face.

A stump, bears S38° E, 23.5 ft. (35.6 lks.) dist., no visible scribing.

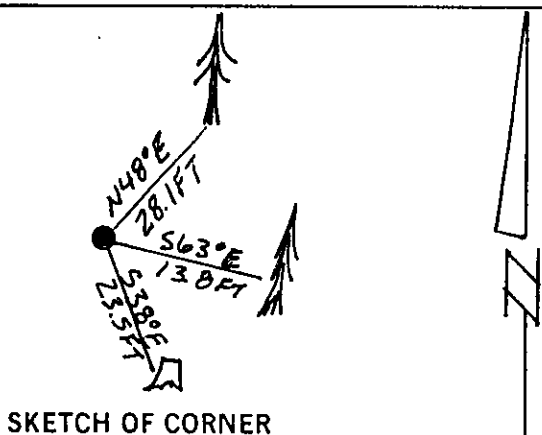
III. Established one new bearing tree:

A fir, 17 ins. diam., bears S63° E, 13.8 ft. diam., mkd. 5 HES 787 BT.

Painted red bands around the bearing trees and attached "Land Survey Monument" and "Bearing Tree" signs.

Set a 6 ft. galvanized steel guard post with "Land Survey Marker" and "Property Boundary" decals, North, 3 ft. dist from corner.

Magnetic declination: 20° East



SKETCH OF CORNER

CERTIFICATION

I, Thomas M. Hommel
certify the information shown herein is true and correct.

Thomas M. Hommel
Signature Ground Party Chief

I, Alvah F. Hughes
certify that this Corner Record correctly represents work performed by me or under my direction in compliance with the "Corner Recordation Act" (70-22-101, et seq., M.C.A.)

Alvah F. Hughes
Signature of Surveyor & Seal

Date: 11/26/91 Reg. No. 7322 LS
U.S. FOREST SERVICE

Employer: _____

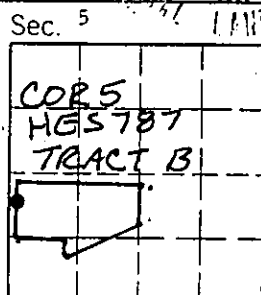
Office of Clerk and Recorder, County of Lincoln. This "corner record" was filed for record on 4-21-92

was noted on the cross-index plat and is assigned page No. 5009, in book No. _____

Carol M. Cummings
County Official

Cross Index No. 5 HES 787 T. 35 N R. 25 W P.M.M.

Adopted July 1, 1981, Montana Board of Professional Engineers & Land Surveyors



• - corner this sheet



RECEIVED
FEB 2 1964
U.S. AIR FORCE
HONOLULU, HAWAII

RECEIVED
FEB 2 1964
U.S. AIR FORCE
HONOLULU, HAWAII

RECEIVED
FEB 2 1964
U.S. AIR FORCE
HONOLULU, HAWAII