

CERTIFIED LAND CORNER RECORDATION

SECTION 31 TWP. 35 N., R. 25 W., M.P.M.

DESCRIPTION OF CORNER EVIDENCE FOUND, AND ORIGINAL RECORD (IF KNOWN)

West  $\frac{1}{4}$  Corner of Sec. 30 - found a Standard Brass Cap Monument  
East  $\frac{1}{4}$  Corner of Sec. 31 - found a Standard Brass Cap Monument

SEE OTHER SIDE

DESCRIPTION OF MONUMENT AND ACCESSORIES ESTABLISHED  
TO PERPETUATE THE ORIGINAL LOCATION OF THIS CORNER:

Date of work: Oct. 1973

SEE DIAGRAM ON OTHER SIDE

SKETCH, WITH COURSE AND DISTANCE TO ADJACENT CORNERS IF DETERMINED IN THIS SURVEY.  
(MAY SKETCH OR PASTE REPRODUCTION ON REVERSE SIDE.)

SEE DIAGRAM ON OTHER SIDE

Surveyor's Seal

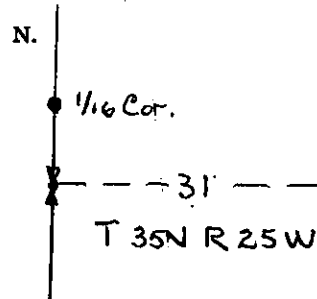
I, Jack H. Ninneman  
certify that the information shown herein is true and correct.

*Jack H. Ninneman*  
Signature of Ground Party Chief

I, Jack W. Ninneman  
certify that I have carefully performed or reviewed the work done on the diagrammed corner as reported on this recordation form and approve the same.

*Jack W. Ninneman*  
Signature of Surveyor

DIAGRAM OF CORNER:



● = Corner recorded in the sheet

Montana License # 534 E.S.  
Registration Number

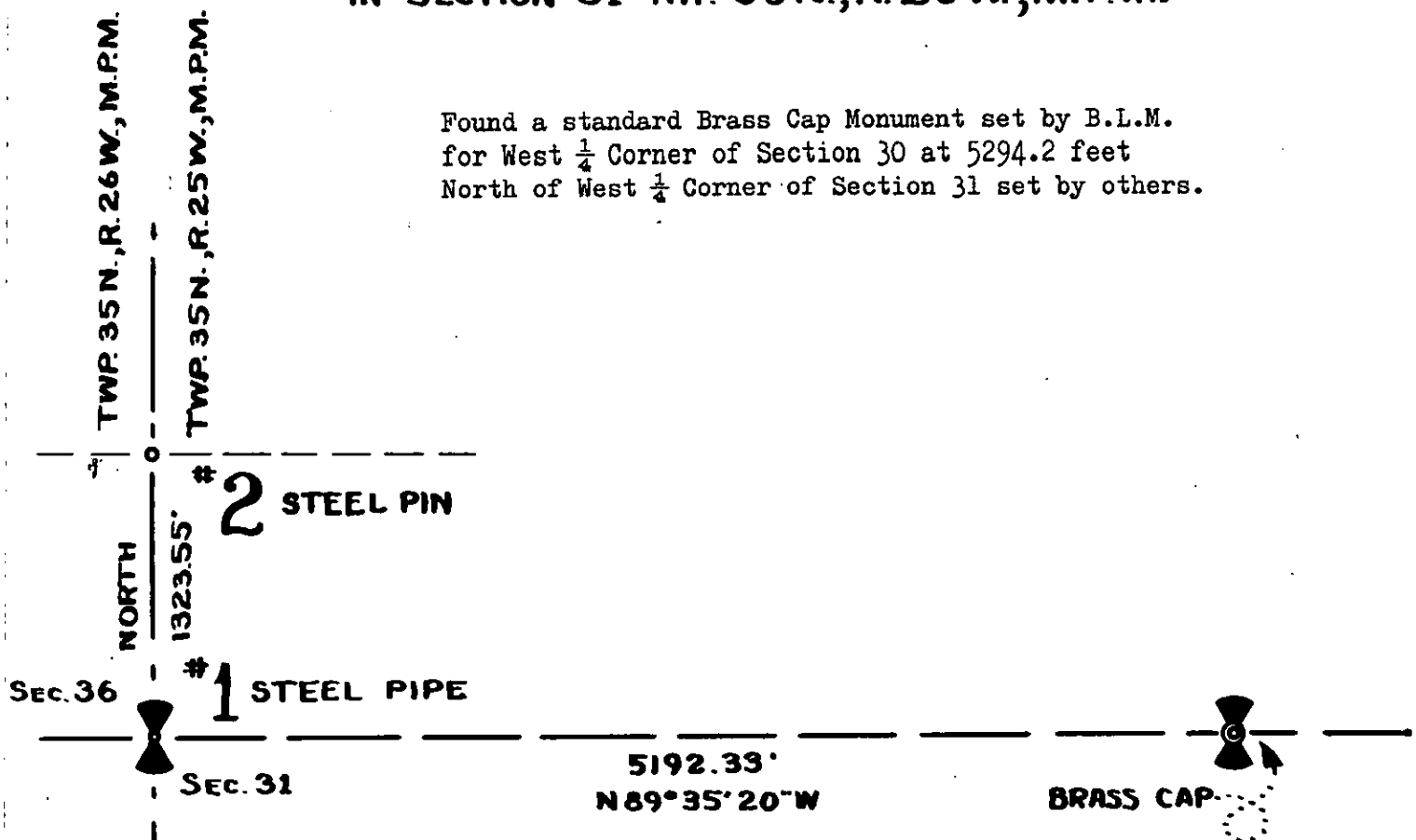
Office of Clerk and Recorder, County of Lincoln

This "corner record" was filed for record on the 21<sup>st</sup> day of November 1973, was noted on the cross-index plat and is assigned page No. 299, in book No. 1

*Edward L. Gough*  
County Official

# RECORDATION OF MONUMENTS SET IN SECTION 31 TWP. 35 N., R. 25 W., M.P.M.

Found a standard Brass Cap Monument set by B.L.M.  
for West  $\frac{1}{4}$  Corner of Section 30 at 5294.2 feet  
North of West  $\frac{1}{4}$  Corner of Section 31 set by others.



- #1 SET A STEEL PIPE FOR W $\frac{1}{4}$  SEC. 31 AT FENCE CORNER  
WITH 1960 LOCATION POSTER Set by others and accepted by  
contiguous owners.
- #2 SET A STEEL PIN FOR W 1/16 N SEC. 31 FROM WHICH A  
LOCATION POSTER ON A CORNER FENCE POST LIES NORTH  
7 FEET AND EAST 1 FOOT. The northwest corner of subject  
Section 31 fell in a mill yard  
and has been destroyed- accordingly  
1/16 Corner-designated #2 herein-  
was set ON LINE between the W  $\frac{1}{4}$   
Corner of Section 31 and the W $\frac{1}{4}$   
Corner of Section 30 at single  
proportionate distance.