

CERTIFIED CORNER RECORDATION

Corner SW Cor S32 T. 35N R. 25W P.M.M. Lincoln County

1. Original GLO Notes:

Set:

A Post, 4 ft. long, 3 ins. square, 24 ins. in the ground for cor. to secs. 5,6,31, and 32, mkd. T35N S32 on NE, T34N S5 on SE, R25W S6 on SW, AND S31 on NW faces with 5 notches on E and 1 notch on W edges;

From which:

A Tamarack, 14 ins. in diam., bears N65°30'E, 36 lks. dist., mkd. T35N R25W S32 BT;
A Tamarack, 14 ins. in diam., bears S70°30'E, 18 lks. dist. mkd. T34N R25W S5 BT;
A Tamarack, 16 ins. in diam., bears S12°W, 81 lks. dist. mkd. T34N R25W S6 BT;
A Tamarack, 14 ins. in diam., bears N68°W, 116 lks. dist. mkd. T35N R25W S31 BT;

BLM Record:

Found Original post as described by the GLO:

Original Bearing Trees:

A Larch stump, 22 ins. in diam., bears N65°E, 34 lks. dist., no markings visible;
A Larch stump, 22 ins. in diam., bears S74°E, 13 lks. dist., markings illegible.
A Larch stump, 30 ins. in diam., bears N68°W, 116 lks. dist., markings illegible.

Set:

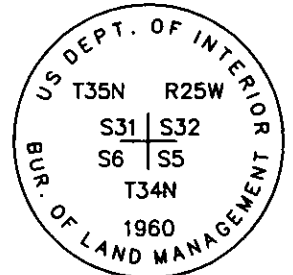
An Iron Post, 30 ins. long, 2½ ins. diam., 26 ins. in the ground, in concrete with A Brass Cap mkd as shown:

A Fir, 7 ins. in diam., bears N25½°E, 27 lks. dist., mkd. T35N R25W S32 BT;
A Larch, 8 ins. in diam., bears S54 3/4°E, 63 lks. dist., mkd. T34N R25W S5 BT;
A Fir, 7 ins. in diam., bears S45°W, 16 lks. dist., mkd. T34N R25W S6 BT;
A Larch, 9 ins. in diam., bears N33½°W, 55 lks. dist., mkd. T35N R25W S31 BT.

1982 James H. Burton:

Found:

A BLM Brass Cap Monument as described above, from which:
A Fir, 13 ins. in diam., bears N25°E, 18.3 ft. dist., with scar;
A Stump, 22 ins. in diam., bears N64°E, 23.8 ft. dist., with scribing on burnt face;
A Stump, 20 ins. in diam., bears S74°E, 11.8 ft. dist., with scribing;
A Larch, 12 ins. in diam., bears S60°E, 42.0 ft. dist., with scar;
A Stump, 24 ins. in diam., bears S12°W, 53.6 ft. dist.
A Fir, 11 ins. in diam., bears S46°W, 10.5 ft. dist. with scar;
A Stump, 30 ins. in diam., bears N72°W, 76.7 ft. with scribing;
A Larch, 11 ins. in diam., bears N33°W, 23.0 ft. dist. with scar.

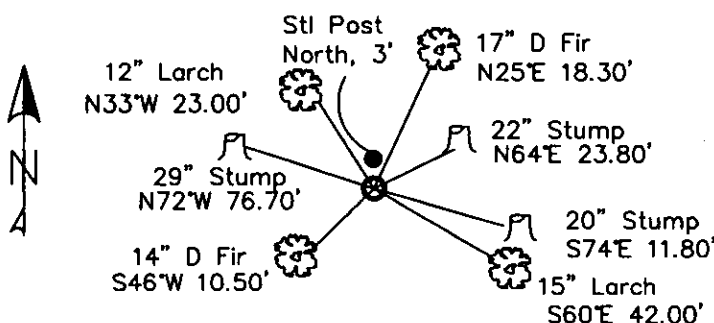


2. Found:

A BLM Brass monument, 3¼ ins. diam. cap, flush with ground, surrounded by a mound of stone, mkd. as shown;
A Douglas Fir, 17 ins. in diam., bears N25°E, 18.30 ft. dist., healed face;
A Larch Stump, 22 ins. in diam., 5 ft. tall, bears N64°E, 23.80 ft. dist, open face, illegible scribing visible;
A Stump, 20 ins. in diam., 5 ft. tall, bears S74°E, 11.80 ft. dist., open face, R25W visible;
A Western Larch, 15 ins. in diam., bears S60°E, 42.00 ft. dist., healed face;
Rotten stump remains, bears S12°W, 53.60 ft. dist;
A Douglas Fir, 14 ins. in diam., bears S46°W, 10.50 ft. dist., healed face;
A Stump, 29 ins. in diam., bears N72°W, 76.70 ft. dist., open face, BT visible;
A Western Larch, 12 ins. in diam., bears N33°W, 23.00 ft. dist., healed face;
A Steel Post with LSM & Boundary tags, bears North, 3 ft. dist.

3. Restacked and painted a mound of stone around monument; Repainted blazes and rings on BTs, placed LSM signs on backs of stumps.

MAGNETIC DECLINATION - 16° EAST



SKETCH OF CORNER

CERTIFICATION

I, CURT HECKROTH
certify that the information shown herein is true and correct.

Curt Heckroth
Signature of Ground Party

I, LAWRENCE A. GLAHE
certify that the Corner Record represents work performed by me or under my supervision in compliance with the "Corner Recordation Act" (Pub. Law 86-60, et seq. H.R.A.)

Lawrence A. Glahe
Signature of Registered Professional Engineer and Land Surveyor

Date: 11-10-10 9748 LS
Employer: GLAHE & ASSOCIATES

Office of Clerk and Recorder, County of Lincoln This "corner

record" was filed for recor 229633 BOOK: CCR CC&R'S PAGE: 11618 Pages: 1

was noted on the cross-i STATE OF MONTANA LINCOLN COUNTY RECORDED: 11/15/2010 11:47 KOI: CC&R'S

book No. TAMMY D. LAUER CLERK AND RECORDER

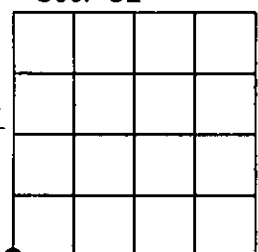
FEE: \$0.00

TO: GLAHE & ASSOC., INC. P.O. BOX 1863, SANDPOINT, ID. 83860,

Cross Index No. Z-5 T. 35N R. 25W PMM

Adopted July 1, 1981, Montana Board of Professional Engineers & Land Surveyors

Sec. 32



● corner this sheet

THE UNIVERSITY OF CHICAGO

DEPARTMENT OF THE HISTORY OF ARTS

RECEIVED

1964

1964

1964

1964

1964

1964

1964

1964

1964

1964

1964

1964

1964

1964

1964

1964

1964

1964

1964

1964

1964

1964

1964

1964

1964

1964

1964

1964

1964

1964