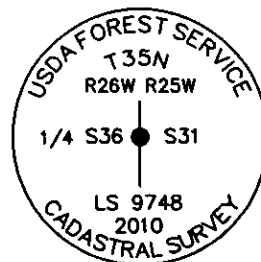


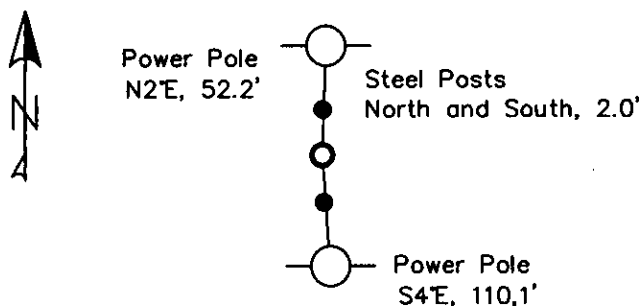
CERTIFIED CORNER RECORDATION

Corner W 1/4 Sec 31 T. 35N R. 25W P.M.M. Lincoln County

1. 1973 Certified Corner Record by Jack H. Ninneman Montana License # 534 E.S. Pg. 299 Bk. 1.
Set:
A steel pipe for W 1/4 Sec. 31 at fence corner with 1960 location poster set by others and accepted by contiguous owners.
2. Found an Iron Pipe, 1 1/4 ins. diam., set 1.0 ft. dist. from pine log fence corner;
K Tag referencing IP on Power Pole #D44 bears N2E, 52.2 ft. dist. from set corner position;
3. Set:
An Aluminum Cap, 3 1/4 ins. in diam., on 5/8 ins. diam. rebar, set 0.2 ft. above ground, mkd. as shown;
Set by single proportion from the re-established township corner.
Established:
A Power Pole, #D44 bears N2E, 52.2 ft. dist.;
A Power Pole #D43 bears S4E, 110.1 ft. dist.;
Removed K Tag from Power Pole #D44 referencing IP;
Steel posts with decals bear North and South, 2.0 ft. dist.



MAGNETIC DECLINATION - 15°2' EAST



CERTIFICATION

I, Erich Shrack
certify the information shown herein is true and correct.
I, LAWRENCE A. GLAHE
certify that this Corner Record is a true and correct representation of the corner as performed by me or under my direction in compliance with the "Corner Recordation Act" (Pub. Law 86-530, et seq. M.C.A.)
Date: 12-6-10
Employer: GLAHE & ASSOC., INC.

SKETCH OF CORNER

Office of Clerk and Recorder, County of Lincoln. This "corner

record" was filed for record (230111 BOOK: CCR CC&R'S PAGE: 11710 Pages: 1
was noted on the cross-index
book No. _____

STATE OF MONTANA LINCOLN COUNTY
RECORDED: 12/09/2010 11:10 KOI: CC&R'S
TAMMY D. LAUER CLERK AND RECORDER
FEE: \$0.00 BY Lawrence A. Glahe
TO: GLAHE & ASSOC., INC. P.O. BOX 1863, SANDPOINT, ID. 83860,
Cross Index No. X-1 T. 35N R. 25W PMM

Sec. 31

Adopted July 1, 1981, Montana Board of Professional Engineers & Land Surveyors

● corner this sheet

UNITED STATES DEPARTMENT OF AGRICULTURE

WATER RESOURCES DIVISION

WASHINGTON, D. C. 20250

REPORT OF THE DIRECTOR

OF THE WATER RESOURCES DIVISION

FOR THE YEAR 1964

1964

1964

WASHINGTON, D. C. 20250

1964

1964

1964

1964

1964

1964

1964