

# CERTIFIED CORNER RECORDATION

Corner NW Cor Sec 31 T. 35N R. 25W P.M.M. Lincoln County

## 1. 1894 GLO Record:

Set:

A post, 4 ft. long, 4 ins. square, 24 ins. in ground, for corner to sections 25, 30, 31 and 36, marked with scribing and notches and blazed 4 bearing trees.

## 1981 Corner recordation and Certificate of Survey #943 by M.I. Booth reg. #2968-S:

Corner was reestablished from collateral evidence with reference to plat #661. Set a 3x30 ins. alum. post and cap on bluff west of highway as a reference monument. Referenced by:

A Pine 10 ins. in diam. N1°30'W, a dist. of 46.5 ft. mkd. Ref. mon.

A Larch 8 ins. in diam. N26°W, a dist. of 37.0 ft. mkd. Ref. mon.

N14°16'12"W, 292.04 ft. to a brass cap set in concrete mkd. Fortine Azi. Mkd. (Certificate of Survey's record: N19°16'W 292.04 to mark).

## 1986 Corner Recordation and Certificate of Survey by Thomas C. Hill:

Found:

Booth's monument excavated out of the ground and lying near the corner position. Found the three references called for. Holding the record information on Booth's Corner Recordation, the section corner position was computed, from which a new witness corner location was determined as follows:

Bearing N89°41'47"W, 430.00 ft. dist. along the section line of sections 25 and 36, set a 2½ in. diam. by 30 ins. long alum. post, 27 ins. in ground, with a ¾ in. diam. alum. cap attached for the witness corner to the section corner,

From Which:

A Larch snag, 15 ins. diam., bears N58°W, 51.8 ft. dist., scribing RM BT visible (Booth's BT)

A Root hole of a fallen 13 ins. diam. pine, bears N26°W, 50.3 ft. dist., scribing RM BT visible on log. (Booth's BT)

A Fir, 11 ins. diam., bears N34°W, 56.7 ft. dist., mkd. WC T35N R26W S25 BT. (new reference)

Fortine Azimuth Mark (brass disk in concrete, est. by U.S.C.&G.S. in 1960), bears N18°18'W, 292.84 ft. dist.

Removed Booth's monument from the area.

## 2. Re-established Corner from MDOT maps FS-4(6)160 Sht 17 of 22 and 16 of 22, Plat #661 and COS #943.

## 3. Set:

An Aluminum Cap, ¾ ins. diam., on a 5/8 ins. Rebar, in a 3 ft. hole with cap at 1.0 ft. ± below asphalt surface of abandoned mill yard at 0.3 ft. ± above fill surface, mkd. as shown;

Established:

A Spruce, 12 ins. in diam., bears N72°E, 415.60 ft. dist., scribed;

The Northern most corner of 18 ins. concrete wall, bears S79°E, 509.10 ft. dist.;

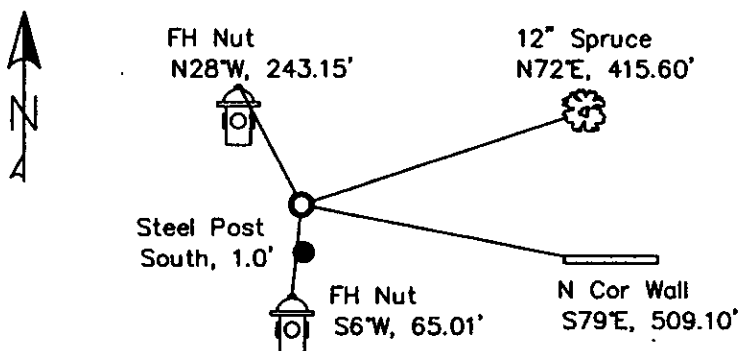
A Fire Hydrant top nut bears S6°W, 65.01 ft. dist.;

A Fire Hydrant top nut bears N28°W, 243.15 ft. dist.;

Steel post with LSM decal bears South, 1.0 ft. dist.



MAGNETIC DECLINATION - 15°2' EAST



SKETCH OF CORNER

CERTIFICATION

I, Erich Shrack  
certify the information shown herein is true and correct.

LAWRENCE A. GLAHE  
I, LAWRENCE A. GLAHE, a duly qualified and licensed Professional Engineer and Land Surveyor, certify that this Corner Recordation and Certificate of Survey represents work performed by me or under my direction in compliance with the "Corner Recordation Act" (Title 22-401, et seq. M.C.A.)

Date: 12/6/10 9748 LS  
Employer: GLAHE & ASSOC., INC.

Office of Clerk and Recorder, County of Lincoln. This "corner

record" was filed for rec: 230093 BOOK: CCR CC&R'S PAGE: 11692 Pages: 1

was noted on the cross-RECORDED: 12/09/2010 10:52 KOI: CC&R'S

book No. TAMMY D. LAUER CLERK AND RECORDER

FEE: \$0.00

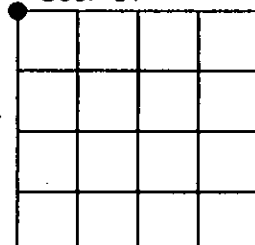
BY: Lawrence A. Glahe

TO: GLAHE & ASSOC., INC. P.O. BOX 1863, SANDPOINT, ID. 83860,

Cross Index No. V-1 T. 35N R. 25W PMM

Adopted July 1, 1981, Montana Board of Professional Engineers & Land Surveyors

Sec. 31



● corner this sheet

UNITED STATES GOVERNMENT

OFFICE OF THE SECRETARY OF THE INTERIOR

WASHINGTON, D. C. 20540

Dear Sir:

I am pleased to inform you that your application for a lease of land in the State of California has been approved. The land is located in the County of San Diego and is of approximately 100 acres. The lease is for a term of 10 years, and the rent is \$100 per acre per year. The lease is subject to the terms and conditions of the General Land Office Manual.

The land is located in the State of California, and is of approximately 100 acres. The lease is for a term of 10 years, and the rent is \$100 per acre per year. The lease is subject to the terms and conditions of the General Land Office Manual.

I am pleased to inform you that your application for a lease of land in the State of California has been approved. The land is located in the County of San Diego and is of approximately 100 acres. The lease is for a term of 10 years, and the rent is \$100 per acre per year. The lease is subject to the terms and conditions of the General Land Office Manual.

I am pleased to inform you that your application for a lease of land in the State of California has been approved. The land is located in the County of San Diego and is of approximately 100 acres. The lease is for a term of 10 years, and the rent is \$100 per acre per year. The lease is subject to the terms and conditions of the General Land Office Manual.

I am pleased to inform you that your application for a lease of land in the State of California has been approved. The land is located in the County of San Diego and is of approximately 100 acres. The lease is for a term of 10 years, and the rent is \$100 per acre per year. The lease is subject to the terms and conditions of the General Land Office Manual.

I am pleased to inform you that your application for a lease of land in the State of California has been approved. The land is located in the County of San Diego and is of approximately 100 acres. The lease is for a term of 10 years, and the rent is \$100 per acre per year. The lease is subject to the terms and conditions of the General Land Office Manual.

I am pleased to inform you that your application for a lease of land in the State of California has been approved. The land is located in the County of San Diego and is of approximately 100 acres. The lease is for a term of 10 years, and the rent is \$100 per acre per year. The lease is subject to the terms and conditions of the General Land Office Manual.