

CERTIFIED CORNER RECORDATION

Corner Cor 2 of HES 787 T. 35N R. 25W P.M.M. Lincoln County

1. 1917 HES Original record by R.E. Maurer:

Set:

A small stone, marked with a cross (X) under a sandstone 28x12x5 ins., 18 ins. in the ground, marked 2 H.E.S. 787 on the E face and a cross on top for the exact corner point. From which: Two bearing trees and a mound of earth 4 ft. base, 2 ft. high, NE of corner.

1960 B.L.M. Resurvey by D. Cunningham:

Found:

A sandstone, 25x12x5 ins., set and mkd. as described in the official record and witnessed by the original bearing trees.

A Fir, 10 ins. in diam., bears S2°02'W, 7 lks. dist., markings overgrown; Record N11°30'W, 129½ lks. mkd. X 2 HES 787 BT.

A Stump Hole, bears N11°30'W, 129½ lks. dist, with fallen log mkd. X; Record S 2°02'W, 7 lks. mkd. X 2 HES 787 BT.

Set: an Iron Post, 30 ins. long, 2½ ins. diam., 26 ins. in the ground, in concrete with Brass Cap mkd.

Established:

A Larch, 5 ins. in diam. bears S13°E, 19 lks. dist., mkd. 2 HES 787 BT;

Bury the original stone alongside and rebuild a mound of stone, 3 ft. base, 2 ft. high, NE of the iron post.

1991 Resurvey by Alvah F. Hughes:

Found:

A BLM Brass Cap on 2½ ins. diam. iron pipe, flush with ground, mkd. as shown.

A Rotten Root Crown, bears N11°W, 85.5 ft. (129.5 lks.) dist., (Original);

A Fir, 13 ins. in diam., bears S4°W, 4.8 ft. (7.3 lks.) dist., healed face;

A Larch, 7 ins. in diam., bears S13°E, 12.3 ft. (18.6 lks.) dist., healed face (1960).

Established:

Painted Red bands around the BTs and attached LSM and BT signs.

A 6 ft. galvanized steel guard post with LSM and PB decals, North 4 ft. dist.

2. Found:

A BLM Brass Monument, 3¼ ins. in diam., flush with ground & with a mound of stone, NW, 2 ft. dist. from monument, mkd. as shown.

A Western Larch, 7 ins. in diam. bears S13°E, 12.3 ft. dist., healed face;

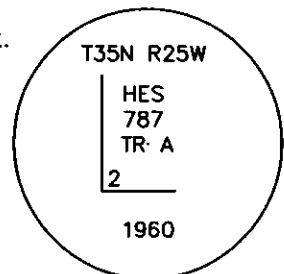
A Douglas Fir, 13 ins. in diam. bears S4°W, 4.80 ft. dist., healed face;

A Steel post with LSM & Boundary tags, bears North, 4 ft. dist.;

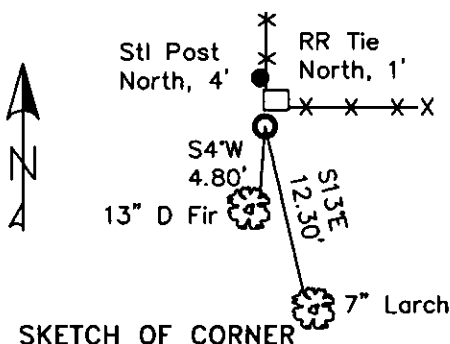
A Railroad Tie Fence corner post, 9 ins. x 6 ins., bears North, 1 ft. dist.

3. Stacked and painted a mound of stone around monument.

Repainted blazes and rings on all BTs.



MAGNETIC DECLINATION - 16° EAST



SKETCH OF CORNER

CERTIFICATION

I, CURT HECKROTH
 certify the information shown herein is true and correct.

Curt Heckroth
 Signature of Ground Party

I, LAWRENCE A. GLAHE
 certify that this Corner Monument represents work performed by me or under my direction in compliance with the "Corner Recordation Act" (No. 121-101, et seq. M.C.A.)

Lawrence A. Glahe
 Signature of Surveyor

Date: 11-16-2010 9748 LS
 Employer: GLAHE & ASSOCIATES, INC.

Office of Clerk and Recorder... County of Lincoln This "Record" Page: 1
 229693 BOOK: CCR CC&R'S

record" was filed for reco STATE OF MONTANA LINCOLN COUNTY

was noted on the cross- RECORDED: 11/16/2010 9:33 KOI: CC&R'S

book No. TAMMY D. LAUER CLERK AND RECORDER

FEE: \$0.00

BY: *Leanne Davis*

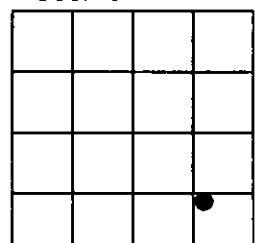
TO: GLAHE & ASSOC., INC. P.O. BOX 1863, SANDPOINT, ID. 83860

2 HES 787

Cross Index No. 5006 T. 35N R. 25W PMM

Adopted July 1, 1981, Montana Board of Professional Engineers & Land Surveyors

Sec. 6



● corner this sheet

