

# CERTIFIED CORNER RECORDATION

Corner Cor 1 of HES 787 T. 35N R. 25W P.M.M. Lincoln County

## 1. 1917 HES Original record by R.E. Maurer:

Set:

A small stone, marked with a cross (X) under a sandstone 27x8x6 ins., 17 ins. in the ground, marked 1 H.E.S. 787 on the NW face and a cross on top for the exact corner point. From which: Two bearing trees and a mound of earth 4 ft. base, 2 ft. high, NW of corner.

1960 B.L.M. Resurvey by D. Cunningham:

Found:

A limestone, 14x6x5 ins., set and mkd. as described in the official record and witnessed by the original bearing trees.

A Fir, 17 ins. in diam., bears S7°E, 35 lks. dist., markings overgrown; Record S8°59'E, 35 lks.

A Stump Hole, bears N88°54'W, 71 lks. dist, mkd. 1 HES 787 BT; Record S88°52'W, 71 lks.

Set:

An Iron Post, at the corner point, 30 ins. long, 2½ ins. diam, 26 ins. in the ground, in concrete, with brass cap mkd:

Established:

A Fir, 8 ins. in diam., bears S41 3/4°E, 32 lks. dist., mkd. 1 HES 787.

A Fir, 6 ins. in diam., bears S30°W, 40 lks. dist., mkd. 1 HES 787 BT.

Bury the original stone alongside and raise a mound of stone, 3 ft. base, 2 ft. high, NW of the iron post.

1992 Resurvey by Alvah F. Hughes:

Found:

A BLM Brass Cap on 2½ ins. diam. iron pipe, flush with ground, mkd. as shown.

A Fir, 21 ins. in diam., bears S9°E, 24.4 ft. (37 lks.) dist., healed face. (Original);

A Fir, 11 ins. in diam., bears S42°E, 21.1 ft. (32 lks.) dist., healed face (1960);

A Fir, 10 ins. in diam., bears S30°W, 26.4 ft. (40 lks.) dist., healed face (1960).

Established:

Painted Red bands around the BTs and attached LSM and BT signs.

A 6 ft. galvanized steel guard post with LSM and PB decals, North 3 ft. dist.

## 2. Found

A BLM Brass monument, 3¼ ins. in diam., flush with ground;

A Douglas Fir, 13 ins. in diam., bears S42°E, 21.10 ft. dist., healed face;

A Douglas Fir, 23 ins. in diam., bears S9°E, 24.40 ft. dist., healed face;

A Douglas Fir, 12 ins. in diam., bears S30°W, 26.40 ft. dist., healed face;

A Steel post with LSM & Boundary tags, bears North, 3 ft. dist.

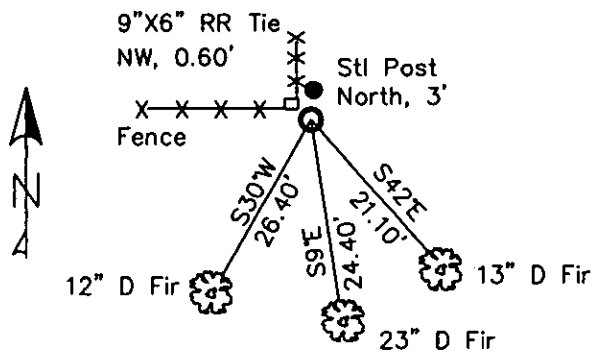
A Railroad Tie Fence corner, 9 ins. x 6 ins., bears Northwest, 0.60 ft. from corner.

## 3. Stacked and painted a mound of stone around monument;

Repainted blazes and rings on all BTs.

T35N R25W  
HES  
787  
TR A  
1  
1960

MAGNETIC DECLINATION - 16° EAST



SKETCH OF CORNER

CERTIFICATION

I, CURT HECKROTH, certify the information shown herein is true and correct.

I, LAWRENCE A. GLAHE, certify that this Corner Recordation was performed by me or under my supervision in compliance with the "Corner Recordation Act" (Title 22-101, et seq. M.C.A.)

Date: 11-16-10 9748 LS

Employer: GLAHE & ASSOC., INC.

Office of Clerk and Recorder, County of Lincoln This "corner record" was filed for record in 229692 BOOK: CCR CC&R'S PAGE: 11662 Pages: 1

STATE OF MONTANA LINCOLN COUNTY

RECORDED: 11/16/2010 9:32 KOI: CC&R'S

TAMMY D. LAUER CLERK AND RECORDER

FEE: \$0.00 BY: *Lawrence A. Glahe*

TO: GLAHE & ASSOC., INC. P.O. BOX 1863, SANDPOINT, ID. 83860,

1 HES 787

Cross Index No. 5076 T. 35N R. 25W PMM

Adopted July 1, 1981, Montana Board of Professional Engineers & Land Surveyors

Sec. 6


● corner this sheet

