

CERTIFIED CORNER RECORDATION

Corner Cor 10 of HES 787 T. 35N R. 25W P.M.M. Lincoln County

1917 HES Original Record by R.E. Maurer:

Set a small stone, marked with an X under a granite stone 26x16x8 ins., 16 ins. In the ground, mkd. 10 HES 787 on the NE face and a cross on top for the exact corner point.
Two bearing trees and a mound of earth 4 ft. base, 2 ft. high, NE of corner.

1960 BLM Resurvey by D. Cunningham:

Found:

A Granite Stone, 24x16x8 ins. set and mkd. as above;
A Fir stump, 18 ins. dia., bears N20°13'W, 28 lks. dist. mkd. 10 HES 787 BT;
A Stump hole bears N46°45'E, 34 lks. dist. with fallen log mkd. 10 HES 787 BT;
Bury the original stone alongside and raise a mound of stone, 3 ft. base, 2 ft. high, NE of the IP.

Set:

A Fir, 8 ins. In diam. bears N49°E, 58 lks. dist. mkd. 10 HES 787 BT;
A Fir, 9 ins. In diam. bears N49 3/4°W, 50 lks. dist. mkd. 10 HES 787 BT;

1991 Resurvey by Alvah F. Hughes:

Found:

A BLM Brass cap on on 2 1/2 ins. diam. Iron pipe, flush with ground, mkd. as shown;
A Fir, 16 ins. In diam. bears N49°E, 38.3 ft. dist., healed face.

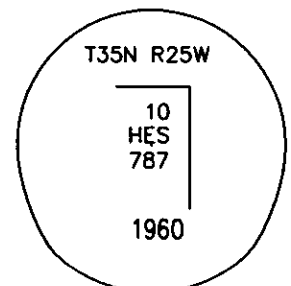
Set:

A Fir, 10 ins. In diam. bears S67°E, 52.8 ft. dist., mkd. 10 HES 787 BT;
A 6 ft. galvanized steel guard post with LSM & PB decals, South 2 ft. dist.

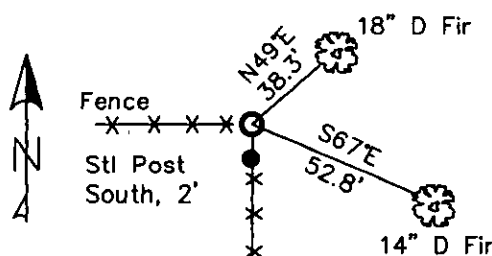
2. Found:

A BLM Brass monument, 3 1/4 ins. in diam., 4 ins. below surface with metal directly next to it.
A Douglas Fir, 18 ins. in diam. bears N49°E, 38.30 ft. dist., healed face;
A Douglas Fir, 14 ins. in diam., bears S67°E, 52.80 ft. dist., healed face;
A Fence corner, 5 ins. in diam. round, bears NE 0.50 ft. dist. from corner;
A Galvanized Pipe, 3/4 ins. in diam., 6 ins. out of ground, bears N, 3 ft. dist.

3. Stacked and painted a mound of stone around monument;
Repainted blazes and rings on all BTs.



MAGNETIC DECLINATION - 16° EAST



SKETCH OF CORNER

CERTIFICATION

I, CURT HECKROTH
certify the information shown herein is true and correct.
Curt Heckroth
Professional Land Surveyor

I, LAWRENCE A. GLAHE
certify that this Corner Record represents work
performed by me or under my direction in compliance with
the "Corner Recordation Act" (MCA 76-22-101, et seq.)

L. Glahe
Professional Land Surveyor

Date: 11-16-2010 9748 LS
Employer: GLAHE & ASSOC., INC.

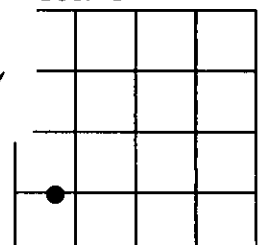
Office of Clerk and Recorder, County of Lincoln This Record
229690 BOOK: CCR CC&R'S PAGE: 11660 Pages: 1
record" was filed for record on STATE OF MONTANA LINCOLN COUNTY
RECORDED: 11/16/2010 9:30 KOI: CC&R'S
was noted on the cross-index TAMMY D. LAUER CLERK AND RECORDER
book No. FEE: \$0.00 BY: *Tammy D. Lauer*
TO: GLAHE & ASSOC., INC. P.O. BOX 1863, SANDPOINT, ID. 83860,

10 HES 787

Cross Index No. 5014 T. 35N R. 25W PMM

Adopted July 1, 1981, Montana Board of Professional Engineers & Land Surveyors

Sec. 5



● corner this sheet

