

CERTIFIED CORNER RECORDATION

Corner Cor 1 of HES 786 T. 35N R. 25W P.M.M. Lincoln County

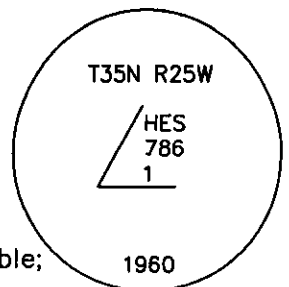
1917 HES Original Record by R. E. Maurer:

A small stone mkd. with a cross (X) under a slate stone, 26x10x6 ins., 16 ins. in the ground, mkd. 1 HES 786 on the NE face and a cross (X) on top.
Two Bearing Trees and a mound of earth, 4 ft. base, 2 ft. high, NE of corner.

1960 BLM Resurvey by D. Cunningham:

Found:

A Fir, 13 ins. in diam. bears N31°35'W, 54 lks. dist., mkd. 1 HES 786 BT;
A stump hole, 9 ins. in diam., bears S9°13'W, 55 lks. dist. with fallen log, mkd. 1 HES 786 BT;
Set: An Iron Post, 30 ins. long, 2½ ins. diam., 26 ins. in the ground, in concrete, with
A Brass Cap marked as shown. Determined from remains of original BTs.
A Fir, 6 ins. in diam., bears S27½°E, 80 lks. dist., mkd. 1 HES 786 BT;
A Spruce, 7 ins. in diam., bears S68½°W, 73 lks. dist. mkd. 1 HES 786 BT;
Raise a mound of stone, 3 ft. base, 2 ft. high, NE of IP.



1991 Resurvey by Alvah F. Hughes:

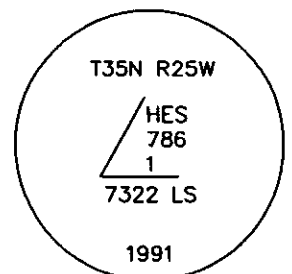
Found:

A 2½ ins. diam. iron pipe, with brass cap missing, set in concrete;
A Fir Snag, 17 ins. in diam., bears N32°E, 35.6 ft. dist., mkd. 1 HES 786 visible;
A Fir, 8 ins. in diam., bears S27°E, 52.8 ft. dist., healed face;
Rotten remains, bears S68°W, 48.2 ft. dist., visible axe marks.

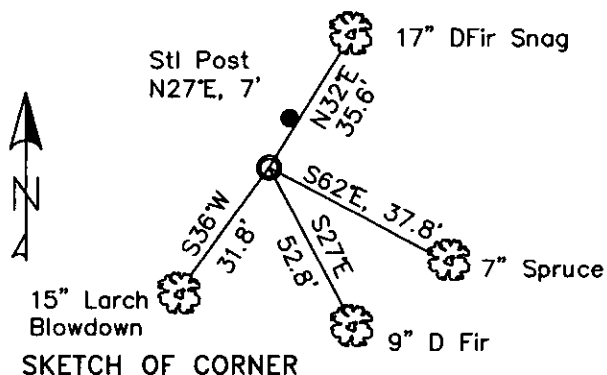
Set:

Corner had been hit as is it lies in a skid trail and brass cap is detached and missing.
Verified position from BTs and replaced iron pipe with 22 ins. long Alum. Pipe, 2½ ins. diam., with 3¼ ins. Alum. Cap, buried 12 ins. below road grade. Cap mkd. as shown.
A Larch, 14 ins. in diam., bears S36°W, 31.8 ft. dist., mkd. 1 HES 786 BT.
A galvanized steel guard post, 6 ft. long with LSM & PB decals, bears N27°E, 7 ft. dist.

- Found USDA Aluminum Monument, 3¼ ins. in dia., 12 ins. below surface of skid road.
A Douglas Fir snag, 17 ins. in diam., bears N32°E, 35.60 ft. dist., open face illegible scribing visible;
A Douglas Fir, 9 ins. in diam., bears S27°E, 52.80 ft. dist., healed face;
A Western Larch blown down, 15 ins. in diam. bears S36°W, 31.80 ft. dist., open face, illegible scribing visible;
A Steel Post, bent up bears N27°E, 7 ft. dist;
A Railroad Tie, bears South, 1 ft. dist.
- Reburied monument, Painted blazes and rings on the bearing trees.
A Steel Post, bears N27°E, 7 ft. dist. with LSM & Boundary tags
A Spruce, 7 ins. in diam., bears S62°E, 37.80 ft. dist., scribed 1 HES 786 BT with Alum. nail in side-center.



MAGNETIC DECLINATION - 16° EAST



CERTIFICATION

I, CURT HECKROTH
certify the information shown herein is true and correct.

I, LAWRENCE A. GLAHE
certify that this Corner Recordation was performed by me or under my direct supervision in compliance with the "Corner Recordation Act" (Public Law 92-101, et seq. H.R. 101).

Date: 11-10-10 9748 LS
Employer: GLAHE & ASSOC., INC.

Office of Clerk and Recorder Lincoln This "corner
229688 BOOK: CCR CC&R'S PAGE: 11658 Pages: 1
record" was filed for record STATE OF MONTANA LINCOLN COUNTY
RECORDED: 11/16/2010 9:28 KOI: CC&R'S
was noted on the cross-index TAMMY D. LAUER CLERK AND RECORDER
book No. 5017 FEE: \$0.00 BY: Alvah F. Hughes
TO: GLAHE & ASSOC., INC. P.O. BOX 1863, SANDPOINT, ID. 83860

1 HES 786

Cross Index No. 5017 T. 35N R. 25W PMM

Adopted July 1, 1981, Montana Board of Professional Engineers & Land Surveyors

Sec. 5

● corner this sheet

