

# CERTIFIED CORNER RECORDATION

Corner Cor 8 of HES 786 T. 35N R. 25W P.M.M. Lincoln County

## 1917 HES Original Record by R. E. Maurer:

A small stone mkd. with a cross (X) under a slate stone, 24x12x4 ins., 14 ins. in the ground, mkd. 8 HES 786 on the NW face and a cross (X) on top.  
Two Bearing Trees and a mound of stone 4 ft. base, 2 ft. high, NW of corner.

## 1960 BLM Resurvey by D. Cunningham:

### Found:

A slate stone, 20x12x4 ins., set and mkd. as above.

A Larch, 26 ins. in diam. bears N71°50'E, 24 lks. dist., mkd. 8 HES 786 BT;

A stump hole, bears N79°33'W, 67 lks. dist. mkd. 8 HES 786 BT:

Set: An Iron Post, 30 ins. long, 2½ ins. diam., 26 ins. in the ground, in concrete, with A Brass Cap marked as shown.

A Larch, 6 ins. in diam., bears N30°E, 58 lks. dist., mkd. 8 HES 786 BT;

A Larch, 6 ins. in diam., bears S68°E, 56 lks. dist. mkd. 8 HES 786 BT;

Bury the original stone alongside and raise a mound of stone, 3 ft. base, 2 ft. high, NW of IP.

## 1991 Resurvey by Alvah F. Hughes:

### Found:

A BLM Brass Cap, ¾ ins. diam., 3 ins. above ground, with rock mound, W 1 ft., mkd. as shown;

A Larch, 8 ins. in diam., bears N28°E, 38.1 ft. dist., healed face;

A Larch, 25 ins. in diam., bears N72°E, 16.0 ft. dist., H S 786 B visible;

A Larch, 9 ins. in diam. bears S56°E, 36.9 ft. dist., healed face;

A down Larch, bears N79°W, 44.2 ft. dist., no visible scribing.

### Set:

A galvanized steel guard post, 6 ft. long with LSM & PB decals, bears West, 3 ft. dist.

### 2. Found:

A BLM Brass monument, ¾ ins. diam., 3 ins. out of ground with a mound of stone, West, 1 ft. dist. mkd. as shown;

A Western Larch, 8 ins. in diam., bears N28°E, 38.10 ft. dist., healed face;

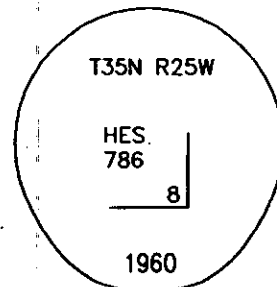
A Western Larch, 25 ins. in diam., bears N72°E, 16.0 ft. dist., open face, illegible scribing visible;

A Western Larch, 11 ins. in diam., bears S56°E, 36.9 ft. dist., healed face;

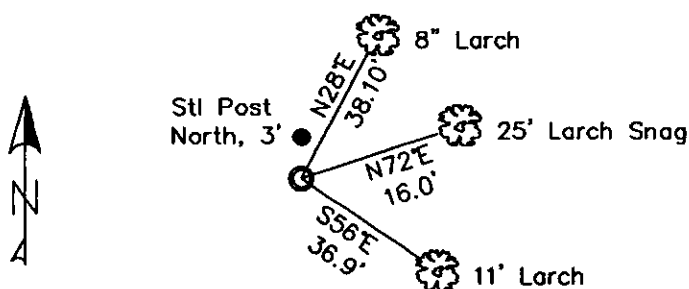
A Steel post, bears North, 3 ft. dist. (1991 record West, 3 ft.) with LSM & Boundary tags.

### 3. Stacked and painted a mound of stone around monument.

Repainted blazes and rings on all BTs.



MAGNETIC DECLINATION - 16° EAST



SKETCH OF CORNER

CERTIFICATION

I, CURT HECKROTH  
certify the information shown herein is true and correct.

*Curt Heckroth*  
Signature of Ground Party Only

I, LAWRENCE A. GLAHE  
certify that the Corner Recordation Resurvey was performed by me or under my supervision in compliance with the "Corner Recordation Act" (Title 22-101, et seq. M.C.A.)

*Lawrence A. Glahe*  
Signature of Registered Professional Engineer and Land Surveyor

Date: 11-10-10 9748 LS  
Employer: GLAHE & ASSOC., INC.

Office of Clerk and Recorder, County of Lincoln This "corner record" was filed for record on 229687 BOOK: CCR CC&R'S PAGE: 11657 Pages: 1  
was noted on the cross-index STATE OF MONTANA LINCOLN COUNTY  
book No. TAMMY D. LAUER CLERK AND RECORDER  
FEE: \$0.00 BY: *Tammy D. Lauer*  
TO: GLAHE & ASSOC., INC. P.O. BOX 1863, SANDPOINT, ID. 83860,

8 HES 786

Cross Index No. 5025 T. 35N R. 25W PMM

Adopted July 1, 1981, Montana Board of Professional Engineers & Land Surveyors

Sec. 5


● corner this sheet

