

# CERTIFIED CORNER RECORDATION

Corner Cor 7 of HES 786 T. 35N R. 25W P.M.M. Lincoln County

## 1917 HES Original Record by R. E. Maurer:

A small stone mkd. with a cross (X) under a slate stone, 24x18x18 ins., 14 ins. in the ground, mkd. 7 HES 786 on the NW face and a cross (X) on top.  
Two Bearing Trees and a mound of stone 4 ft. base, 2 ft. high, NW of corner.

## 1960 BLM Resurvey by D. Cunningham:

### Found:

A sandstone, 20x20x12 ins., set and mkd. as above.  
A Larch stump, 20 ins. in diam. bears N86°10'E, 56 lks. dist., mkd. 7 HES 786 BT;  
A Larch snag, 19 ins. in diam., bears S33°56'W, 44 lks. dist., mkd. X 7 HES 786 BT;  
Raise a mound of stone 3 ft. base, 2 ft. high, NE of corner.  
Set: An Iron Post, 30 ins. long, 2½ ins. diam., 26 ins. in the ground, in concrete, with  
A Brass Cap marked as shown.  
A Fir, 5 ins. in diam., bears S76½°E, 49 lks. dist., mkd. 7 HES 786 BT;  
A Larch, 5 ins. in diam., bears S5¼°E, 53 lks. dist. mkd. 7 HES 786 BT;  
Bury the original stone alongside and raise a mound of stone, 3 ft. base, 2 ft. high, NE of IP.

## 1991 Resurvey by Alvah F. Hughes:

### Found:

A BLM Brass Cap, ¾ ins. diam., 6 ins. above ground, with rock mound, N 1 ft., mkd. as shown;  
A Larch stump, bears N86°E, 42.9 ft. dist., no visible scribing;  
A Larch stump, bears S34°W, 28.3 ft. dist., 7 HES 786 BT visible;  
A Douglas Fir, 11 ins. in diam. bears S75°E, 32.0 ft. dist., healed face;  
A Larch, 11 ins. in diam. bears S5°E, 35.0 ft. dist., healed face.

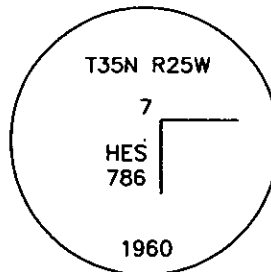
### Set:

A galvanized steel guard post, 6 ft. long with LSM & PB decals, bears West, 3 ft. dist.

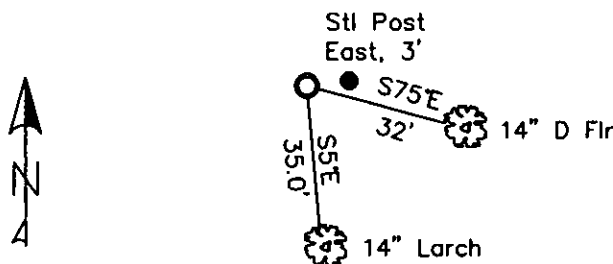
### 2. Found:

A BLM Brass monument, ¾ ins. diam., 6 ins. out of ground with a mound of stone, North, 1 ft. dist.,  
mkd. as shown;  
A Douglas Fir, 14 ins. in diam., bears S75°E, 32.0 ft. dist., healed face;  
A Western Larch, 14 ins. in diam., bears, S5°E, 35.0 ft. dist., healed face;  
A Steel post, bears East, 3 ft. dist. (1991 record West, 3 ft.) with LSM & Boundary tags.

3. Stacked and painted a mound of stone around monument.  
Repainted blazes and rings on all BTs.



MAGNETIC DECLINATION - 16° EAST



SKETCH OF CORNER

CERTIFICATION

I, CURT HECKROTH  
certify the information shown herein is true and correct.  
\_\_\_\_\_  
State Ground Party

I, LAWRENCE A. GLAHE  
certify that the Corner Location correctly represents work  
performed by me or under my direction in compliance with  
the "Corner Recordation Act" (Mont. Code Annotated, § 2-2-401, et seq.)  
\_\_\_\_\_  
9748 LS

Date: 11/10/10 **REGISTERED SURVEYOR** 9748 LS  
Employer: GLAHE & ASSOC., INC.

Office of Clerk and Recorder, County of Lincoln. This "corner  
record" was filed for record 229686 BOOK: CCR CC&R'S PAGE: 11656 Pages: 1  
was noted on the cross-ind STATE OF MONTANA LINCOLN COUNTY  
book No. TAMMY D. LAUER CLERK AND RECORDER  
RECORDED: 11/16/2010 9:26 KOI: CC&R'S  
FEE: \$0.00 BY: *Heather D. Smith*  
TO: GLAHE & ASSOC., INC. P.O. BOX 1863, SANDPOINT, ID. 83860,  
7 HES 786

Cross Index No. 5024 T. 35N R. 25W PMM

Adopted July 1, 1981, Montana Board of Professional Engineers & Land Surveyors

Sec. 5


● corner this sheet

1940-1941

1940-1941

1940-1941

1940-1941

1940-1941

1940-1941

1940-1941

1940-1941

1940-1941

1940-1941

1940-1941

1940-1941

1940-1941

1940-1941

1940-1941

1940-1941

1940-1941

1940-1941

1940-1941

1940-1941

1940-1941

1940-1941

1940-1941

1940-1941

1940-1941

1940-1941

1940-1941

1940-1941