

CERTIFIED CORNER RECORDATION

Corner Cor 6 of HES 786 T. 35N R. 25W P.M.M. Lincoln County

1917 HES Original Record by R. E. Maurer:

A small stone mkd. with a cross (X) under a slate stone, 26x14x5 ins., 16 ins. in the ground, mkd. 6 HES 786 on the NW face and a cross (X) on top.
Two Bearing Trees and a mound of stone 4 ft. base, 2 ft. high, NW of corner.

1960 BLM Resurvey by D. Cunningham:

Found:

A Larch, 16 ins. in diam. bears N66°35'E, 27 lks. dist., visible marks HES;
A Larch, 7 ins. in diam., bears N7°06'W, 37 lks. dist., mkd. X HES 786 BT;
Raise a mound of stone 3 ft. base, 2 ft. high, NW of corner.
Set: An Iron Post, 30 ins. long, 2½ ins. diam., 26 ins. in the ground, in concrete, with
A Brass Cap marked as shown. Determined from the original BTs.
Raise a mound of stone, 3 ft. base, 2 ft. high, NW of IP.

1991 Resurvey by Alvah F. Hughes:

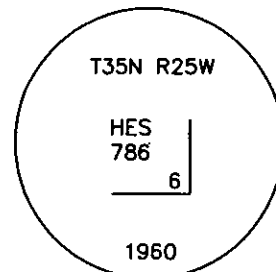
Found:

A BLM Brass Cap, ¾ ins. diam., 31 ins. below ground, mkd. as shown;
A Larch snag, bears N7°E, 29.5 ft. dist., dead and down, 6 HES 786 visible;
No evidence of a stump or stump hole at N7°W, 24.4 ft.
Set:
A Larch, 13 ins. in diam., bears S5°E, 55.6 ft. dist., mkd. 6 HES 786 BT;
A Spruce, 8 ins. in diam., bears N88°E, 57.4 ft. dist., mkd. 6 HES 786 BT;
A galvanized steel guard post, 6 ft. long with LSM & PB decals, bears West, 3 ft. dist.

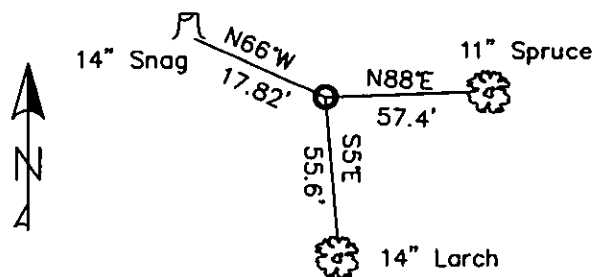
2. Found:

A BLM Brass monument, ¾ ins. in diam., mkd. as shown, 31 ins. below surface with
A Steel post directly above monument;
A Spruce, 11 ins. in diam., bears N88°E, 57.40 ft. dist., open face, 6 HES 786 BT visible;
A Western Larch, 14 ins. in diam., bears S5°E, 55.60 ft. dist., healed face;
A Larch snag, 14 ins. in diam., bears N66°W, 17.82 ft. dist., (record N66°E) with open face
BT visible;
A Western Larch, 5 ins. in diam., lying on ground, bears N7°E, 29.50 ft. dist., no scribing visible.

3. Stacked and painted a mound of stone above and around steel post that is above buried mon.
Repainted blazes and rings on all BTs.



MAGNETIC DECLINATION - 16° EAST



SKETCH OF CORNER

CERTIFICATION

I, CURT HECKROTH
certify the information shown herein is true and correct.

I, LAWRENCE A. GLAHE
certify that this Corner Recordation was performed by me or under my direction in compliance with the "Corner Recordation Act" (76-22-401, et seq. M.C.A.)

Date: 11/16/10 9748 LS
Employer: GLAHE & ASSOC., INC.

Office of Clerk and Recorder, County of Lincoln This "corner
229685 BOOK: CCR CC&R'S PAGE: 11655 Pages: 1
record" was filed for record o STATE OF MONTANA LINCOLN COUNTY
was noted on the cross-index RECORDED: 11/16/2010 9:25 KOI: CC&R'S
book No. TAMMY D. LAUER CLERK AND RECORDER
FEE: \$0.00 BY: [Signature]
TO: GLAHE & ASSOC., INC. P.O. BOX 1863, SANDPOINT, ID. 83860,

6 HES 786

Cross Index No. 5022 T. 35N R. 25W PMM

Adopted July 1, 1981, Montana Board of Professional Engineers & Land Surveyors

Sec. 4

● corner this sheet

47

the 1990s, the number of people in the world who are undernourished has declined from 1.1 billion to 800 million. The number of people who are malnourished has declined from 1.5 billion to 1 billion. The number of people who are obese has increased from 100 million to 300 million. The number of people who are overweight has increased from 100 million to 300 million. The number of people who are obese and overweight has increased from 100 million to 300 million. The number of people who are obese and overweight has increased from 100 million to 300 million.

the 1990s, the number of people in the world who are undernourished has declined from 1.1 billion to 800 million. The number of people who are malnourished has declined from 1.5 billion to 1 billion. The number of people who are obese has increased from 100 million to 300 million. The number of people who are overweight has increased from 100 million to 300 million. The number of people who are obese and overweight has increased from 100 million to 300 million. The number of people who are obese and overweight has increased from 100 million to 300 million.