

CERTIFIED CORNER RECORDATION

Corner Cor 5 of HES 786 T. 35N R. 25W P.M.M. Lincoln County

1917 HES Original Record by R. E. Maurer:

A small stone mkd. with a cross (X) under a slate stone, 28x12x9 ins., 18 ins. in the ground, mkd. 5 HES 786 on the NW face and a cross (X) on top.
Two Bearing Trees and a mound of stone 4 ft. base, 2 ft. high, NW of corner.

1960 BLM Resurvey by D. Cunningham:

Found:

A slate stone, 26x16x10 ins. set and marked as above.
A Larch stump, 12 ins. in diam. bears N12½°E, 30 lks. dist., mkd with 5 HES 786 BT;
A Larch, 12 ins. in diam., bears N63°05'W, 12 lks. dist., mkd. X 5 HES 786 BT;
Raise a mound of stone 3 ft. base, 2½ ft. high, NW of corner.
Set: An Iron Post, 30 ins. long, 2½ ins. diam., 26 ins. in the ground, in concrete, with
A Brass Cap marked as shown.
A Larch, 8 ins. in diam., bears S75 3/4°E, 54 lks. dist., mkd. 5 HES 786 BT.
A Spruce, 9 ins. in diam. bears N33¼°W, 21 lks. dist., mkd. 5 HES 786 BT.
Bury the original stone alongside and raise a mound of stone, 3 ft. base, 2½ ft. high, NW of IP.

1991 Resurvey by Alvah F. Hughes:

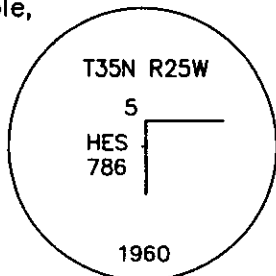
Found:

A BLM Brass Cap, 3¼ ins. diam., flush with ground, with a rock mound North of corner, mkd. as shown;
A Larch stump, bears N20°E, 19.6 ft. dist., 5 HES 786 BT visible;
A Larch, 9 ins. in diam., bears N74°E, 35.6 ft. dist., visible scribing.
A Larch 17 ins. in diam., bears N63°W, 7.9 ft. dist., 5 HES 786 visible;
A Spruce, 14 ins. in diam., bears N30°W, 14.3 ft. dist., 5 HES visible;
Set:
A galvanized steel guard post, 6 ft. long with LSM & PB decals, bears West, 3 ft. dist.

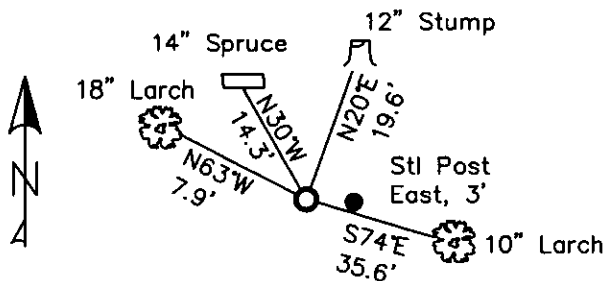
2. Found:

A BLM Brass monument, 3¼ ins. in diam., flush with ground and a mound of stone, North, 1 ft. dist. from corner, mkd. as shown;
A Larch stump, 12 ins. in diam., bears N20°E, 19.6 ft. dist., open face, illegible scribing;
A Western Larch, 10 ins. in diam., bears S74°E, 35.60 ft. dist., (1991 record N74°E), healed face, BT tag is correct;
A Western Larch, 18 ins. in diam., bears N63°W, 7.90 ft. dist., HES 786 visible,
A Spruce, 14 ins. in diam., down and dead, bears N30°W, 14.30 ft. dist., 5 HES visible,
A Steel post, bears East, 3 ft. dist. of corner, with LSM & Boundary tags.

3. Stacked and painted a mound of stone around monument.
Repainted blazes and rings on all BTs.



MAGNETIC DECLINATION - 16° EAST



SKETCH OF CORNER

CERTIFICATION

CURT HECKROTH
I, CURT HECKROTH, certify that the information shown herein is true and correct.

LAWRENCE A. GLAHE
I, LAWRENCE A. GLAHE, certify that this Corner Recordation represents work performed by me or under my direction in compliance with the "Corner Recordation Act" (P.L. 86-601, et seq. H.C.A.)

9748 LS

DATE: 11-16-10

EMPLOYER: GLAHE & ASSOC., INC.

Office of Clerk and Recorder, C
record" was filed for record or
was noted on the cross-index
book No. _____

229684 BOOK: CCR CC&R'S
STATE OF MONTANA LINCOLN COUNTY
RECORDED: 11/16/2010 9:24 KOI: CC&R'S
TAMMY D. LAUER CLERK AND RECORDER
FEE: \$0.00 BY: *Tammy D. Lauer*
TO: GLAHE & ASSOC., INC. P.O. BOX 1863, SANDPOINT, ID. 83860.

5 HES 786
Cross Index No. 5021 T. 35N R. 25W PMM

Adopted July 1, 1981, Montana Board of Professional Engineers & Land Surveyors

Sec. 4			

● corner this sheet

