

CERTIFIED CORNER RECORDATION

Corner Cor 4 of HES 786 T. 35N R. 25W P.M.M. Lincoln County

1917 HES Original Record by R. E. Maurer:

A small stone mkd. with a cross (X) under a slate stone, 26x16x7 ins., 16 ins. in the ground, mkd. 4 HES 786 on the NW face and a cross (X) on top.
Two Bearing Trees and a mound of stone 4 ft. base, 2 ft. high, NW of corner.

1960 BLM Resurvey by D. Cunningham:

Found:

A slate stone, 26x16x7 ins. set and marked as above.
A Fir, 9 ins. in diam. bears N77°W, 42 lks. dist., marking overgrown;
A Larch stump, 18 ins. in diam. bears N30°37'W, 44 lks. dist., mkd with X 4 HES 786 BT;
Raise a mound of stone 3 ft. base, 2½ ft. high, NW of corner.

Set: An Iron Post, 30 ins. long, 2½ ins. diam., 26 ins. in the ground, in concrete, with
A Brass Cap marked as shown.

A Larch, 6 ins. in diam., bears S83 3/4°E, 22 lks. dist., mkd. 4 HES 786 BT.

Bury the original stone alongside and raise a mound of stone, 3 ft. base, 2½ ft. high, NW of IP.

1991 Resurvey by Alvah F. Hughes:

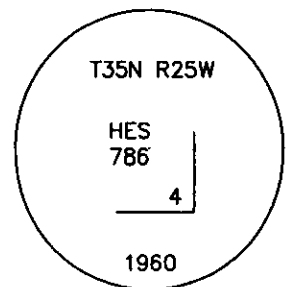
Found:

A BLM Brass Cap, 3¼ ins. diam., flush with ground, with a rock mound, 1 ft. East of corner, mkd. as shown;

A Larch stump, bears N30°W, 29.4 ft. dist., visible scribing;
A Fir, 17 ins. in diam. bears N77°W, 28.6 ft. dist., healed face.
A Larch, 18 ins. in diam., bears N70°E, 6.0 ft. dist., W H 3 visible.
A Larch stump, bears S86°E, 15.9 ft. dist., W H 3 visible;
A Larch, 8 ins. in diam., bears S83°E, 15.0 ft. dist., healed face;
A Larch, 16 ins. in diam. bears S88°W, 13.9 ft. dist., W visible.

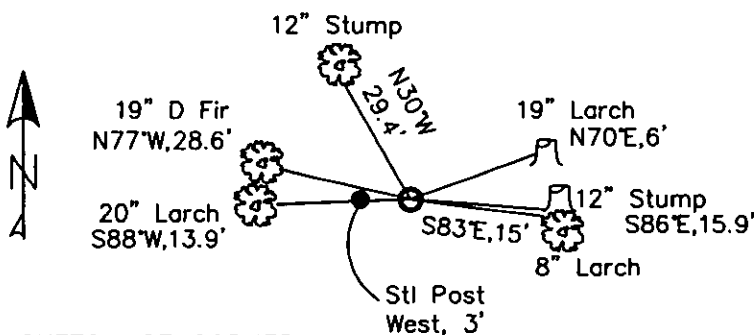
Set:

A galvanized steel guard post, 6 ft. long with LSM & PB decals, bears West, 3 ft. dist.



2. Found BLM Brass monument, 3¼ ins. in diam., flush with ground with a mound of stone, West, 1 ft. dist. from corner (record 1991 East), mkd. as shown;
A Western Larch, 12 ins. in diam., bears N30°W, 29.40 ft. dist., open face with chopmarks;
A Douglas Fir, 19 ins. in diam., bears N77°W, 28.60 ft. dist., healed face;
A Western Larch, 19 ins. in diam., bears N70°E, 6 ft. dist., open face, no scribing visible;
A Western Larch stump, 12 ins. in diam., bears S86°E, 15.9 ft. dist., open face, no scribing;
A Western Larch, 8 ins. in diam., bears S83°E, 15.00 ft. dist., healed face;
A Western Larch, 20 ins. in diam., bears S88°W, 13.90 ft. dist., open face, no scribing;
A Steel post, on ground by monument (record West, 3 ft. dist.)
3. Stacked and painted a mound of stone around monument.
Repainted blazes and rings on all BTs. Put Steel post back in West, 3 ft. dist.

MAGNETIC DECLINATION - 16° EAST



SKETCH OF CORNER

CERTIFICATION

I, CURT HECKROTH
certify the information shown herein is true and correct.

Curt Heckroth
Professional Land Surveyor

I, LAWRENCE A. GLAHE
certify that the Corner Location shown represents work performed by me or under my direction in compliance with the "Corner Recordation Act" (P.L. 86-401, et seq. H.C.A.)

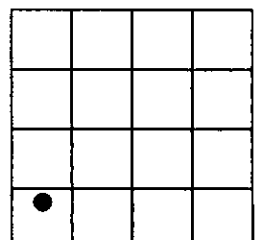
L.A. Glahe
Professional Land Surveyor

Date: 11-16-10 9748 LS
Employer: GLAHE & ASSOC., INC.

Office of Clerk and Recorder, County of Lincoln, This "corner
229683 BOOK: CCR CC&R'S PAGE: 11653 Pages: 1
record" was filed for record STATE OF MONTANA LINCOLN COUNTY
was noted on the cross-index RECORDED: 11/16/2010 9:23 KOI: CC&R'S
book No. TAMMY D. LAUER CLERK AND RECORDER
FEE: \$0.00 BY: *Jeannie Curran*
TO: GLAHE & ASSOC., INC. P.O. BOX 1863, SANDPOINT, ID. 83860,
4 HES 786
Cross Index No. 5020 T. 35N R. 25W PMM

Adopted July 1, 1981, Montana Board of Professional Engineers & Land Surveyors

Sec. 4



● corner this sheet

