

CERTIFIED CORNER RECORDATION

Corner Cor 3 of HES 786 T. 35N R. 25W P.M.M. Lincoln County

1917 HES Original Record by R. E. Maurer:

A small stone mkd. with a cross (X) under a slate stone, 28x9x6 ins., 18 ins. in the ground, mkd. 3 HES 786 on the SW face and a cross (X) on top.

Two Bearing Trees and a mound of stone 4 ft. base, 2 ft. high, SW of corner.

"Beginning with point for listing Cor. No. 1, identical with Corn. No. 3 of HES 786, which is a slate stone, 10x9x6 ins. above ground, as set by me June 12, 1917. I adopt this corner for Cor. No. 1 of this survey and mark it 1 HES 785 on the NE face. From which the two original Bearing Trees and a mound of stone, 4 ft. base, 2 ft. high, NE of corner.

1942 HES original record by A.O. Modlin:

Beginning with Cor. No. 1 of HES 785, heretofore described, as this corner stone is in poor condition

I destroy the stone and in its place establish Cor. No. 1 of this survey as follows: Place

A limestone, 5x4x3 ins. marked with a cross (X) under an iron post, 3 ft. long, 2 ins. in diam., 26 ins. in the ground, with a Brass Cap marked as shown.

A Tamarack, 10 ins. in diam. bears S48°07'E, 85 lks. dist., mkd with a cross;

A Tamarack, 8 ins. in diam. bears S77°45'E, 116 lks. dist., mkd with a cross;

Raise a mound of stone 4 ft. base, 2 ft. high, NW of corner.

1991 Resurvey by Alvah F. Hughes:

Found:

A USDA Brass Cap, 2½ ins. diam., on 2 ins. diam. iron pipe, 8 ins. above ground, with a rock collar.

mkd. as shown;

A Larch, 16 ins. diam., bears S78°E, 76.9 ft. dist., 60 visible;

A Larch stump., bears S43°E, 92.4 ft. dist., 1 HES 1260 BT visible.

A Larch, 11 ins. in diam., bears S18°E, 112 ft. dist., HES 1260 visible.

Set:

A galvanized steel guard post, 6 ft. long with LSM & PB decals, bears N60°W, 26.9 ft. dist.

2. Found:

A USDA Brass monument, 2½ ins. in diam., 8 ins. out of ground surrounded by a mound of stone;

A Western Larch, 20 ins. in diam., bears S78°E, 76.90 ft. dist., healed face;

A Western Larch stump, 8 ins. in diam., bears S43°E, 92.40 ft. dist., visible 1 HES 1260 B;

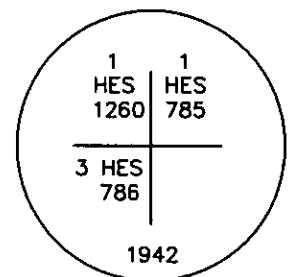
A Western Larch, 14 ins. in diam., bears S18°E, 112.00 ft. dist., partially healed face,

chop marks visible;

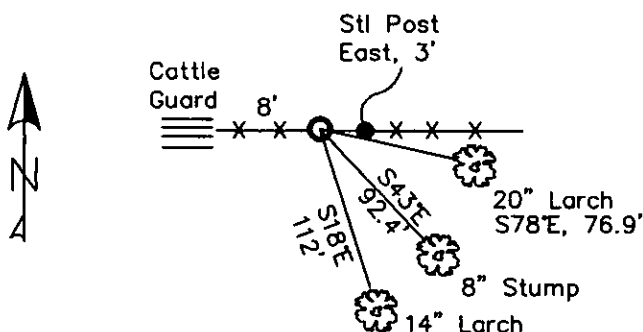
A Steel post, bears East, 3 ft. dist., (record N60°W, 26.90 ft.) with LSM & Boundary tags.

3. Painted stones around monument.

Repainted blazes and rings on all BTs. New BT tags on S78°E BT & Stump.



MAGNETIC DECLINATION - 16° EAST



SKETCH OF CORNER

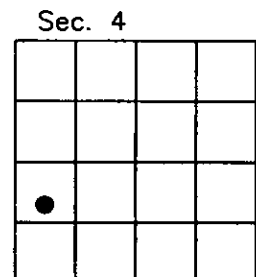
CERTIFICATION  
I, CURT HECKROTH  
certify the information shown herein is true and correct.  
Signature: *Curt Heckroth*  
I, LAWRENCE A. GLAHE  
certify that the Corner Location described herein represents work performed by me or under my direction in compliance with the "Corner Recordation Act" (79-2240), et seq. (M.C.A.)  
Signature: *Lawrence A. Glahe*  
Date: *11/16/10* 9748 LS  
Employer: *GLAHE & ASSOC., INC.*

Office of Clerk and Recorder County of Lincoln This "corner  
229682 BOOK: CCR CC&R'S PAGE: 11652 Pages: 1  
record" was filed for reco STATE OF MONTANA LINCOLN COUNTY  
was noted on the cross- RECORDED: 11/16/2010 9:22 KOI: CC&R'S  
book No. TAMMY D. LAUER CLERK AND RECORDER  
FEE: \$0.00 BY: *Tammy D. Lauer*  
TO: GLAHE & ASSOC., INC. P.O. BOX 1863, SANDPOINT, ID. 83860,

3 HES 786

Cross Index No. 5019 T. 35N R. 25W PMM

Adopted July 1, 1981, Montana Board of Professional Engineers & Land Surveyors



● corner this sheet



*[Faint, illegible text covering the upper two-thirds of the page, possibly bleed-through from the reverse side.]*

*[Handwritten signature or name, possibly "John Doe", in dark ink.]*

*[Handwritten text or initials, possibly "J.D.", below the signature.]*

*[Faint, illegible text at the bottom of the page, possibly a footer or additional notes.]*