

CERTIFIED CORNER RECORDATION

Corner Cor 4 of HES 784 T. 35N R. 25W P.M.M. Lincoln County

1917 HES Original Record by R. E. Maurer:

A slate stone, 26x8x6 ins., 16 ins. in the ground, mkd. 4 HES 784 on the NW face and a cross (X) on top.

Two Bearing Trees and a mound of stone 4 ft. base, 2 ft. high, NW of corner.

1960 BLM Resurvey by D. Cunningham:

Found: Slate stone, 24x6x4 ins., set and mkd. as above.

A Larch Stump, 12 ins. in diam. bears N54°47'W, 63 lks. dist., mkd. X 4 HES 784 BT;

A Stump hole, bears N12°50'W, 80 lks. dist., with fallen log mkd. X.

Set an Iron Post, 30 ins. long, 2½ ins. diam., 26 ins. in the ground, in concrete, with A Brass Cap mkd as shown.

A Fir, 6 ins. in diam., bears N65½°W, 39 lks. dist., mkd. 4 HES 784 BT.

A Fir, 6 ins. in diam., bears N0°45'W, 28 lks. dist., mkd. 4 HES 784 BT.

Bury the original stone alongside and raise a mound of stone, 3 ft. base, 2 ft high, NW of IP.

1991 Resurvey by Alvah F. Hughes:

Found A BLM Brass Cap, 3¼ ins. diam., flush with the ground, with a rock mound, 1 ft. West of corner, mkd. as shown;

A Larch stump, bears N54°W, 41.5 ft. dist., no visible scribing.

A Fir, 8 ins. in diam., bears N2°E, 18.9 ft. dist., HES 784 visible.

A Fir, 9 ins. in diam., bears N64°W, 25.7 ft. dist., healed face.

Rotten remains, bears N13°W, 52.8 ft. dist.

Set:

A galvanized steel guard post, 6 ft. long with LSM & PB decals, bears North, 2 ft. dist.

2. Found:

A BLM Brass Monument, 3¼ ins. in diam., flush with ground with stone mound West, 1 ft. of monument, mkd. as shown;

A Douglas Fir, 8 ins. in diam., standing dead, bears N2°E, 18.90 ft. dist., with partially open face, illegible scribing visible;

A Douglas Fir, 10 ins. in diam., standing dead, bears N64°W, 25.70 ft. dist., well healed face;

A Steel post, bears North, 2 ft. dist., with LSM & Boundary tags.

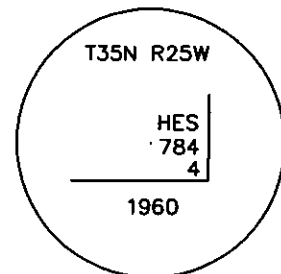
3. Established:

A Douglas Fir, 9 ins. in diam., bears N30°E, 20.70 ft. dist., scribed 4 HES 784 BT;

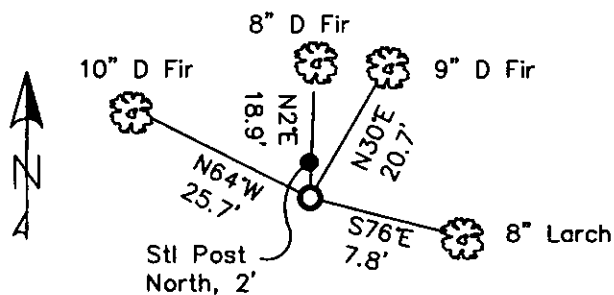
A Western Larch, 8 ins. in diam., bears S76°E, 7.80 ft. dist., scribed 4 HES 784 BT;

Stacked and painted a stone mound around monument.

Repainted blazes and rings on dead BTs.



MAGNETIC DECLINATION - 16° EAST



SKETCH OF CORNER

CERTIFICATION

CURT HECKROTH
certify the information shown herein is true and correct.

Curt Heckroth
Surveyor

LAWRENCE A. GLAHE
certify that the Corner Location shown herein represents work performed by me or under my supervision in compliance with the "Corner Recordation Act" (MCA 92-22-101, et seq.)

Lawrence A. Glahe
Surveyor

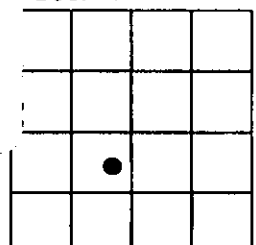
Date: 11/16/10 9748 LS
Employer: GLAHE & ASSOC., INC.

Office of Clerk and Recorder, County of Lincoln This "corner
229678 BOOK: CCR CC&R'S PAGE: 11648 Pages: 1
record" was filed for record or STATE OF MONTANA LINCOLN COUNTY
was noted on the cross-index RECORDED: 11/16/2010 9:18 KOI: CC&R'S
book No. TAMMY D. LAUER CLERK AND RECORDER
FEE: \$0.00 BY: *Tammy D. Lauer*
TO: GLAHE & ASSOC., INC. P.O. BOX 1863, SANDPOINT, ID. 83860,
4 HES 784

Cross Index No. 5005 T. 35N R. 25W PMM

Adopted July 1, 1981, Montana Board of Professional Engineers & Land Surveyors

Sec. 4



● corner this sheet

