

CERTIFIED CORNER RECORDATION

Corner Cor 3 of HES 784 T. 36N R. 25W P.M.M. Lincoln County

1917 HES Original Record by R. E. Maurer:

Cor. 3 identical with Cor. 3 of the listing survey: A shale stone, 6x10x8 ins., above ground, marked H/3 and witnessed by 1 bearing tree. I destroy the listing corner and accessory and Set a Slate stone, 36x14x4 ins, 26 ins. in the ground mkd. 3 HES 784 on the SW face and a cross (X) on top.

Two Bearing Trees and a mound of stone 4 ft. base, 2 ft. high, SW of corner.

1960 BLM Resurvey by D. Cunningham:

Found: Shale stone, 14x14x4 ins. set and mkd. as above.

A Larch stump, 30 ins. diam. bears S84°W, 39 lks. dist., mkd. 3 HES 784 BT;

A Fir, 24 ins. in diam., bears N61°25'W, 35 lks. dist., visible mark X.

Set an Iron Post, 30 ins. long, 2½ ins. diam., 26 ins. in the ground, in concrete, with A Brass Cap mkd as shown.

A Fir, 10 ins. in diam., bears S81½°W, 59 lks. dist., mkd. 3 HES 784 BT.

Bury the original stone alongside and raise a mound of stone, 3 ft. base, 2 ft high, SW of IP.

1991 Resurvey by Alvah F. Hughes:

Found A BLM Brass Cap, 3¼ ins. diam., flush with the ground, with a rock mound, 1 ft. SW of corner, mkd. as shown;

A Fir stump, bears N61°W, 24.0 ft. dist., no visible scribing.

A Larch stump, bears S86°W, 26.0 ft. dist., 3 HES 78 visible.

A Fir stump, bears S81°Wm 39.0 ft. dist., 3 HES visible.

Set:

A galvanized steel guard post, 6 ft. long with LSM & PB decals, bears West, 3 ft. dist.;

A Spruce, 13 ins. in diam., bears N17°E, 25.4 ft. dist., mkd. 3 HES 784 BT;

A Douglas Fir, 8 ins. in diam., bears N63°E, 21.1 ft. dist., mkd. 3 HES 784 BT.

2. Found:

A BLM Brass Monument, 3¼ ins. in diam., flush with ground with a mound of stone, SW 1 ft. of monument, mkd. as shown;

A Douglas Fir stump, 24 ins. in diam., bears N61°W, 24 ft. dist, with open face, chop marks and BLM BT tag;

A Western Larch, 30 ins. in diam., bears S86°W, 26 ft. dist., no scribing & BLM BT tag;

A Stump, 12 ins. in diam., bears S81°W, 39 ft. dist., open face, no scribing & BLM BT tag;

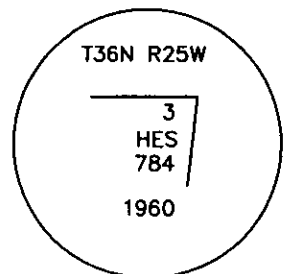
A Spruce, 15 ins. in diam., bears N17°E, 25.40 ft. dist., open face, 3 HES 784 BT visible;

A Douglas Fir, 10 ins. in diam., bears N63°E, 21.10 ft. dist., healed face;

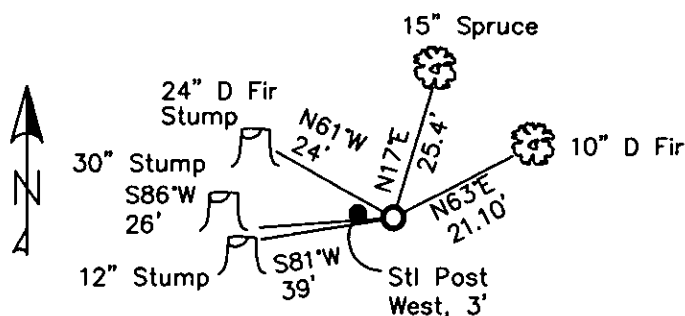
A Steel post bears West, 3 ft. dist. with LSM & Boundary tags.

3. Stacked and painted stones around monument;

Repainted blazes and rings on BTs.



MAGNETIC DECLINATION - 16° EAST



SKETCH OF CORNER

CERTIFICATION

I, CURT HECKROTH
 certify the information shown herein is true and correct.

Curt Heckroth
 Signature of Ground Party

I, LAWRENCE A. GLAHE
 certify that this Corner Recordation was performed by me or under my direction in compliance with the "Corner Recordation Act" (P.L. 86-401, et seq. (R.C.A.))

Lawrence A. Glahe
 Signature of Surveyor

Date 11-10-10 9748 LS
 Surveyor

Employer: GLAHE & ASSOC., INC.

Office of Clerk and Recorder, County of Lincoln This "corner

229677 BOOK: CCR CC&R'S PAGE: 11647 Pages: 1

record" was filed for record on STATE OF MONTANA LINCOLN COUNTY

was noted on the cross-index RECORDED: 11/16/2010 9:17 KOI: CC&R'S

book No. _____

TAMMY D. LAUER CLERK AND RECORDER

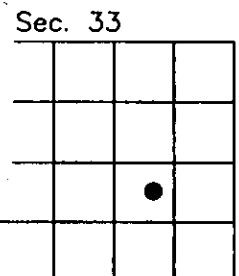
FEE: \$0.00

TO: GLAHE & ASSOC., INC. P.O. BOX 1863, SANDPOINT, ID. 83860,

3 HES 784

Cross Index No. 5004 T. 36N R. 25W PMM

Adopted July 1, 1981, Montana Board of Professional Engineers & Land Surveyors



● corner this sheet

... ..
... ..
... ..

... ..
... ..
... ..

... ..
... ..
... ..

... ..
... ..
... ..

... ..
... ..
... ..

... ..
... ..
... ..

... ..
... ..
... ..