

CERTIFIED CORNER RECORDATION

Corner Cor 2 of HES 784 T. 36N R. 25W P.M.M. Lincoln County

1917 HES Original Record by R. E. Maurer:

Cor. 2 identical with Cor. 2 of the listing survey: A shale stone, 4x8x6 ins., above ground, marked H/2 and witnessed by 1 bearing tree. I destroy the listing corner and accessories and Set a small stone, mkd. with a cross (X) under a slate stone, 28x10x7 ins., 18 ins. in the ground, marked 2 HES 784 on the SE face and a cross (X) on top.  
Two Bearing Trees and a mound of stone 4 ft. base, 2 ft. high, SE of corner.

1960 BLM Resurvey by D. Cunningham:

Found: Shale stone, 26x10x7 ins. mkd. as above.  
A Stump hole, bears S70°01'E, 34 lks. dist., with fallen log mkd. X;  
A Fir stump, 8 ins. in diam., bears N22½°W, 25 lks. dist., mkd. 2 HES 784 BT.  
Set an Iron Post, 30 ins. long, 2½ ins. diam., 26 ins. in the ground, in concrete, with A Brass Cap mkd as shown.  
A Birch, 6 ins. in diam., bears S69½°E, 35 lks. dist., mkd. 2 HES 784 BT.  
A Fir, 14 ins. in diam., bears S89½°W, 96 lks. dist., mkd. 2 HES 784 BT.  
Bury the original stone alongside and raise a mound of stone, 3 ft. base, 2 ft high, SE of IP.

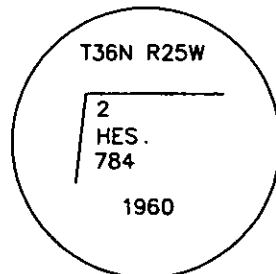
1991 Resurvey by Alvah F. Hughes:

Found A BLM Brass Cap, 3¼ ins. diam., flush with the ground, with a rock mound, 2 ft. East of corner, mkd. as shown;  
A Birch, 9 ins. in diam., bears S68°E, 22.7 ft. dist., mkd. 2 HES 784 BT.  
A Douglas Fir, bears N89°W, 63.7 ft. dist., healed face.  
A rotten fir stump bears N18°W, 13.7 ft. dist., mkd. 2 HES 784 BT.  
Set:  
A galvanized steel guard post, 6 ft. long with LSM & PB decals, bears South, 3 ft. dist.

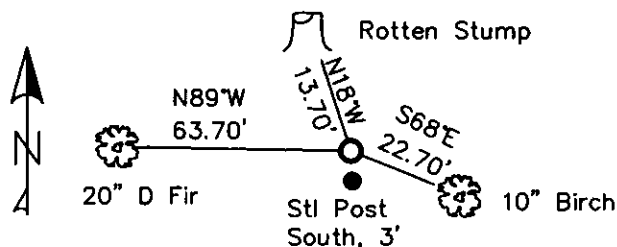
2. Found

A BLM Brass Monument, 3¼ ins. in diam., flush with ground with stone mound, East, 2 ft. dist. marked as shown;  
A Birch, 10 ins. in diam., bears S68°E, 22.70 ft. dist. with well healed face;  
A Douglas Fir, 20 ins. in diam., bears N89°W, 63.70 ft. dist. with well healed face;  
A Rotten Stump, bears N18°W, 13.70 ft. dist. with no scribing;  
A Steel Post, bears South, 3 ft. south of corner with LSM & Boundary tags.

3. Stacked and Painted a mound of stone around monument;  
Repainted blazes and rings on BTs.



MAGNETIC DECLINATION - 16° EAST



SKETCH OF CORNER

CERTIFICATION  
I, CURT HECKROTH  
certify the information shown herein to be true and correct.  
I, LAWRENCE A. GLAHE  
certify that the Corner Record Book represents work performed by me or under my direction in compliance with the "Corner Recordation Act" (7-10-22-101, et seq. M.C.A.)  
Date: 11-10-10  
Employer: GLAHE & ASSOC., INC.  
9748 LS  
9748 LS  
REGISTERED SURVEYOR

Office of Clerk and Recorder, County of Lincoln. This "corner record" was filed for record or was noted on the cross-index book No. 229676 BOOK: CCR CC&R'S PAGE: 11646 Pages: 1  
STATE OF MONTANA LINCOLN COUNTY  
RECORDED: 11/16/2010 9:16 KOI: CC&R'S  
TAMMY D. LAUER CLERK AND RECORDER  
FEE: \$0.00 BY: Deanna Deanna Deanna  
TO: GLAHE & ASSOC., INC. P.O. BOX 1863, SANDPOINT, ID. 83860,  
2 HES 784  
Cross Index No. 5003 T. 36N R. 25W PMM

Adopted July 1, 1981, Montana Board of Professional Engineers & Land Surveyors

Sec. 33


● corner this sheet

