

CERTIFIED CORNER RECORDATION

Corner Cor 1 of HES 784 T. 35N R. 25W P.M.M. Lincoln County

1917 HES Original Record by R. E. Maurer:

Set a small stone marked with a cross (X) under a slate stone, 24x16x8 ins., 14 ins. in the ground, marked 1 HES 784 on the NE face and cross (X) on top:
Two Bearing Trees and a mound of earth 4 ft. base, 2 ft. high, NE of corner.

1960 BLM Resurvey by D. Cunningham:

Found: Slate stone, 24x16x8 ins. mkd. as above.
A Birch, 12 ins. in diam. bears N43½°E, 28 lks. dist., marking overgrown;
A Birch, 8 ins. in diam., bears N64°46'W, 26 lks. dist., mkd. 1 HES 784 BT.
Set an Iron Post, 30 ins. long, 2½ ins. diam., 26 ins. in the ground, in concrete, with
A Brass Cap mkd as shown.
A Spruce, 9 ins. in diam., bears N20°E, 57 lks. dist., mkd. 1 HES 784 BT.
A Spruce, 7 ins. in diam., bears N86½°W, 54 lks. dist., mkd. 1 HES 784 BT.
Bury the original stone alongside the iron post.

1991 Resurvey by Alvah F. Hughes:

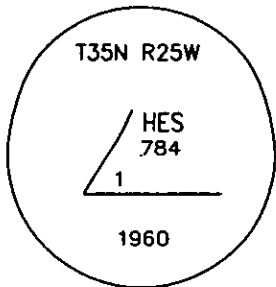
Found A BLM Brass Cap, ¾ ins. diam., 3 ins. out of the ground, mkd. as shown;
A Birch, 14 ins. in diam., bears N44°E, 18.6 ft. dist., healed face.
A down Birch Stump, bears N65°W, 17.1 ft. dist., visible HES 784 BT.
A Spruce, 11 ins. in diam., bears N86°W, 35.7 ft. dist., visible scribing.
Set:
A galvanized steel guard post, 6 ft. long with LSM & PB decals, bears N16°E, 3 ft. dist.

2. Found:

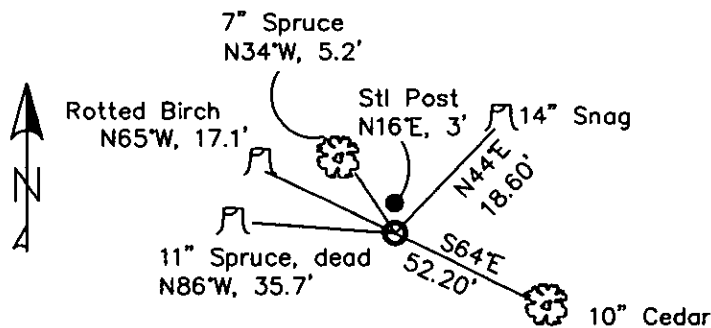
A BLM Brass monument, ¾ ins. in diam., 3 ins. out of ground, mkd. as shown;
A Birch Snag, dead, 14 ins. in diam., bears N44°E, 18.60 ft. dist., with healed face;
A Rotted Birch remains, bears N65°W, 17.10 ft. dist.;
A Spruce, 11 ins. in diam., dead and down, bears N86°W, 35.70 ft. dist., with healed face & BT tags.
A Steel post, bears N16°E, 3 ft. dist. with LSM & Boundary tags.

3. Stacked and painted a mound of stone around monument.

Established:
A Cedar, 10 ins. in diam., bears S64°E, 52.20 ft. dist., scribed 1 HES 784 BT;
A Spruce, 7 ins. in diam., bears N34°W, 5.20 ft. dist., scribed 1 HES 784 BT.
Put aluminum nails in side-center of New Bts for measuring.



MAGNETIC DECLINATION - 16° EAST



SKETCH OF CORNER

CERTIFICATION

I, CURT HECKROTH
certify the information above to be true and correct.
Signature of Ground Party

I, LAWRENCE A. GLAHE
certify that this Corner Record correctly represents work performed by me or under my direction in compliance with the "Corner Recordation Act" (29-22-101, et seq. M.C.A.)
Signature of Surveyor

Date: 11/16/10 9748 LS
Employer: GLAHE & ASSOC., INC.

Office of Clerk and Recorder, County of Lincoln This "corner
229675 BOOK: CCR CC&R'S PAGE: 11645 Pages: 1
record" was filed for record STATE OF MONTANA LINCOLN COUNTY
was noted on the cross-in RECORDED: 11/16/2010 9:15 KOI: CC&R'S
book No. TAMMY D. LAUER CLERK AND RECORDER
FEE: \$0.00 BY: Glennie Lauer
TO: GLAHE & ASSOC., INC. P.O. BOX 1863, SANDPOINT, ID. 83860,
1 HES 784
Cross Index No. 5002 T. 35N R. 25W PMM

Adopted July 1, 1981, Montana Board of Professional Engineers & Land Surveyors

Sec. 4

	●		

● corner this sheet

[Faint handwritten signature]

1997, 1998, 1999, 2000, 2001, 2002, 2003, 2004, 2005, 2006, 2007, 2008, 2009, 2010, 2011, 2012, 2013, 2014, 2015, 2016, 2017, 2018, 2019, 2020, 2021, 2022, 2023, 2024, 2025, 2026, 2027, 2028, 2029, 2030, 2031, 2032, 2033, 2034, 2035, 2036, 2037, 2038, 2039, 2040, 2041, 2042, 2043, 2044, 2045, 2046, 2047, 2048, 2049, 2050, 2051, 2052, 2053, 2054, 2055, 2056, 2057, 2058, 2059, 2060, 2061, 2062, 2063, 2064, 2065, 2066, 2067, 2068, 2069, 2070, 2071, 2072, 2073, 2074, 2075, 2076, 2077, 2078, 2079, 2080, 2081, 2082, 2083, 2084, 2085, 2086, 2087, 2088, 2089, 2090, 2091, 2092, 2093, 2094, 2095, 2096, 2097, 2098, 2099, 2100, 2101, 2102, 2103, 2104, 2105, 2106, 2107, 2108, 2109, 2110, 2111, 2112, 2113, 2114, 2115, 2116, 2117, 2118, 2119, 2120, 2121, 2122, 2123, 2124, 2125, 2126, 2127, 2128, 2129, 2130, 2131, 2132, 2133, 2134, 2135, 2136, 2137, 2138, 2139, 2140, 2141, 2142, 2143, 2144, 2145, 2146, 2147, 2148, 2149, 2150, 2151, 2152, 2153, 2154, 2155, 2156, 2157, 2158, 2159, 2160, 2161, 2162, 2163, 2164, 2165, 2166, 2167, 2168, 2169, 2170, 2171, 2172, 2173, 2174, 2175, 2176, 2177, 2178, 2179, 2180, 2181, 2182, 2183, 2184, 2185, 2186, 2187, 2188, 2189, 2190, 2191, 2192, 2193, 2194, 2195, 2196, 2197, 2198, 2199, 2200, 2201, 2202, 2203, 2204, 2205, 2206, 2207, 2208, 2209, 2210, 2211, 2212, 2213, 2214, 2215, 2216, 2217, 2218, 2219, 2220, 2221, 2222, 2223, 2224, 2225, 2226, 2227, 2228, 2229, 2230, 2231, 2232, 2233, 2234, 2235, 2236, 2237, 2238, 2239, 2240, 2241, 2242, 2243, 2244, 2245, 2246, 2247, 2248, 2249, 2250, 2251, 2252, 2253, 2254, 2255, 2256, 2257, 2258, 2259, 2260, 2261, 2262, 2263, 2264, 2265, 2266, 2267, 2268, 2269, 2270, 2271, 2272, 2273, 2274, 2275, 2276, 2277, 2278, 2279, 2280, 2281, 2282, 2283, 2284, 2285, 2286, 2287, 2288, 2289, 2290, 2291, 2292, 2293, 2294, 2295, 2296, 2297, 2298, 2299, 2300, 2301, 2302, 2303, 2304, 2305, 2306, 2307, 2308, 2309, 2310, 2311, 2312, 2313, 2314, 2315, 2316, 2317, 2318, 2319, 2320, 2321, 2322, 2323, 2324, 2325, 2326, 2327, 2328, 2329, 2330, 2331, 2332, 2333, 2334, 2335, 2336, 2337, 2338, 2339, 2340, 2341, 2342, 2343, 2344, 2345, 2346, 2347, 2348, 2349, 2350, 2351, 2352, 2353, 2354, 2355, 2356, 2357, 2358, 2359, 2360, 2361, 2362, 2363, 2364, 2365, 2366, 2367, 2368, 2369, 2370, 2371, 2372, 2373, 2374, 2375, 2376, 2377, 2378, 2379, 2380, 2381, 2382, 2383, 2384, 2385, 2386, 2387, 2388, 2389, 2390, 2391, 2392, 2393, 2394, 2395, 2396, 2397, 2398, 2399, 2400, 2401, 2402, 2403, 2404, 2405, 2406, 2407, 2408, 2409, 2410, 2411, 2412, 2413, 2414, 2415, 2416, 2417, 2418, 2419, 2420, 2421, 2422, 2423, 2424, 2425, 2426, 2427, 2428, 2429, 2430, 2431, 2432, 2433, 2434, 2435, 2436, 2437, 2438, 2439, 2440, 2441, 2442, 2443, 2444, 2445, 2446, 2447, 2448, 2449, 2450, 2451, 2452, 2453, 2454, 2455, 2456, 2457, 2458, 2459, 2460, 2461, 2462, 2463, 2464, 2465, 2466, 2467, 2468, 2469, 2470, 2471, 2472, 2473, 2474, 2475, 2476, 2477, 2478, 2479, 2480, 2481, 2482, 2483, 2484, 2485, 2486, 2487, 2488, 2489, 2490, 2491, 2492, 2493, 2494, 2495, 2496, 2497, 2498, 2499, 2500, 2501, 2502, 2503, 2504, 2505, 2506, 2507, 2508, 2509, 2510, 2511, 2512, 2513, 2514, 2515, 2516, 2517, 2518, 2519, 2520, 2521, 2522, 2523, 2524, 2525, 2526, 2527, 2528, 2529, 2530, 2531, 2532, 2533, 2534, 2535, 2536, 2537, 2538, 2539, 2540, 2541, 2542, 2543, 2544, 2545, 2546, 2547, 2548, 2549, 2550, 2551, 2552, 2553, 2554, 2555, 2556, 2557, 2558, 2559, 2560, 2561, 2562, 2563, 2564, 2565, 2566, 2567, 2568, 2569, 2570, 2571, 2572, 2573, 2574, 2575, 2576, 2577, 2578, 2579, 2580, 2581, 2582, 2583, 2584, 2585, 2586, 2587, 2588, 2589, 2590, 2591, 2592, 2593, 2594, 2595, 2596, 2597, 2598, 2599, 2600, 2601, 2602, 2603, 2604, 2605, 2606, 2607, 2608, 2609, 2610, 2611, 2612, 2613, 2614, 2615, 2616, 2617, 2618, 2619, 2620, 2621, 2622, 2623, 2624, 2625, 2626, 2627, 2628, 2629, 2630, 2631, 2632, 2633, 2634, 2635, 2636, 2637, 2638, 2639, 2640, 2641, 2642, 2643, 2644, 2645, 2646, 2647, 2648, 2649, 2650, 2651, 2652, 2653, 2654, 2655, 2656, 2657, 2658, 2659, 2660, 2661, 2662, 2663, 2664, 2665, 2666, 2667, 2668, 2669, 2670, 2671, 2672, 2673, 2674, 2675, 2676, 2677, 2678, 26

[illegible]