

# CERTIFIED CORNER RECORDATION

Corner Cor 3 of HES 785 T. 35N R. 25W P.M.M. Lincoln County

## 1917 HES Original Record by R. E. Maurer:

Set a small stone marked with a cross (X) under a sandstone, 24x9x9 ins., 14 ins. in the ground, marked 3 HES 785 on the SE face and cross (X) on top:  
Two Bearing Trees and a mound of earth 4 ft. base, 2 ft. high, SE of corner.

## 1960 BLM Resurvey by D. Cunningham:

Found: Quartzite stone, 24x9x9 ins. mkd. as above.

A Stump hole, bears N47°04'E, 19 lks. dist., with fallen log mkd. 3 HES 785 BT;

A Larch, 11 ins. in diam., bears N6°46'W, 27 lks. dist., mkd. 3 HES 785 BT.

Set an Iron Post, 30 ins. long, 2½ ins. diam., 26 ins. in the ground with

A Brass Cap mkd as shown.

A Larch, 9 ins. in diam., bears S75½°E, 22 lks. dist., mkd. 3 HES 785 BT.

A Larch, 10 ins. in diam., bears S42¼°E, 100 lks. dist., mkd. 3 HES 785 BT.

Bury the original stone alongside and raise a mound of stone, 3 ft. base, 2 ft. high, SE of IP.

## 1991 Resurvey by Alvah F. Hughes:

Found A BLM Brass Cap, 3¼ ins. diam., 2 ins. out of the ground, with a rock mound, 1 ft. South of corner, mkd. as shown;

A Larch, dead and down, bears S7°W, 17.8 ft. dist., mkd. 3 HES 785 BT.

A Larch, 12 ins. in diam. bears S41°W, 66.1 ft. dist., healed face.

Set:

A Cedar, 9 ins. in diam., bears N58°W, 44.4 ft. dist., mkd. 3 HES 785 BT.

A galvanized steel guard post, 6 ft. long with LSM & PB decals, bears S46°W, 3 ft. dist.

## 2. Found:

A BLM Brass monument, 3¼ ins. in diam., flush with ground & mound of stone, South, 1 ft. dist. from corner, mkd. as shown;

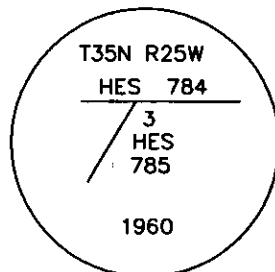
A Western Larch, 13 ins. in diam., bears S41°W, 66.10 ft. dist., with healed face;

A Cedar, 12 ins. in diam., bears N58°W, 44.40 ft. dist., partially healed face, HES 785 BT visible;

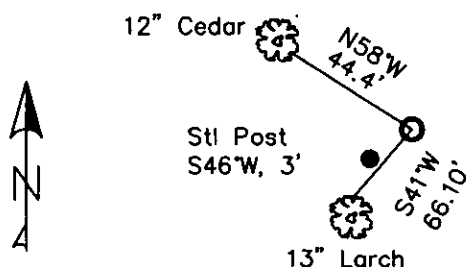
A Steel post, bears S46°W, 3 ft. dist. with LSM & Boundary tags.

## 3. Restacked and painted stones around monument.

Repainted blazes and rings on all BTs.



MAGNETIC DECLINATION - 16° EAST



SKETCH OF CORNER

CERTIFICATION

I, CURT HECKROTH  
certify the information shown herein is true and correct.

I, LAWRENCE A. GLAHE  
certify that the Corner and BLM Records represents work performed by me or under my direction in compliance with the "Corner Recordation Act" (P.L. 86-224-01, et seq. U.S.C.A.)

Date: 11-10-10 9748 LS  
Employer: GLAHE & ASSOC., INC.

Office of Clerk and Recorder, County of Lincoln This "corner  
229674 BOOK: CCR CC&R'S PAGE: 11644 Pages: 1  
record" was filed for record of STATE OF MONTANA LINCOLN COUNTY  
was noted on the cross-index RECORDED: 11/16/2010 9:14 KOI: CC&R'S  
book No. TAMMY D. LAUER CLERK AND RECORDER  
FEE: \$0.00 BY: [Signature]  
TO: GLAHE & ASSOC., INC. P.O. BOX 1863, SANDPOINT, ID. 83860,

3 HES 785  
Cross Index No. 7500 T. 35N R. 25W PMM

Adopted July 1, 1981, Montana Board of Professional Engineers & Land Surveyors

Sec. 4

	●		

● corner this sheet

THE UNIVERSITY OF CHICAGO

THE UNIVERSITY OF CHICAGO  
DIVISION OF THE PHYSICAL SCIENCES  
DEPARTMENT OF CHEMISTRY  
5408 S. DICKINSON DRIVE  
CHICAGO, ILL. 60637  
TEL. 773-835-3100  
FAX 773-835-3101  
WWW.CHEM.UCHICAGO.EDU

THE UNIVERSITY OF CHICAGO  
DIVISION OF THE PHYSICAL SCIENCES  
DEPARTMENT OF CHEMISTRY  
5408 S. DICKINSON DRIVE  
CHICAGO, ILL. 60637  
TEL. 773-835-3100  
FAX 773-835-3101  
WWW.CHEM.UCHICAGO.EDU