

CERTIFIED CORNER RECORDATION

Corner Cor 2 of HES 785 T. 35N R. 25W P.M.M. Lincoln County

1917 HES Original Record by R. E. Maurer:

Set a small stone marked with a cross (X) under a limestone, 26x14x5 ins., 16 ins. in the ground, marked 2 HES 785 on the SE face and cross (X) on top:
 A Larch, 10 ins. in diam., bears S87°E, 26 lks. dist. mkd 2 HES 785 BT;
 A Larch, 9 ins. in diam., bears S39°20'E, 23 lks. dist. mkd 2 HES 785 BT;
 Raise a mound of earth 4 ft. base, 2 ft. high, SE of corner.

1991 Resurvey by Alvah F. Hughes:

Found no monument or accessories.

Set:

An Alum. Mon., 24 ins. long, 2½ ins. diam, 12 ins. below surface with
 A 3¼ ins. diam. Alum Cap mkd as shown. This set with Grand Boundary Method. Buried a piece of rebar next to pipe in ground for location purposes only.
 A Larch, 19 ins. in diam., bears S83°W, 59.7 ft. dist., scribed 2 HES 785 BT.
 A Fir, 12 ins. in diam. bears North, 84.1 ft. dist., scribed 2 HES 785 BT.
 A galvanized steel guard post, 6 ft. long with LSM decal, bears N60°W, 26.9 ft. dist.

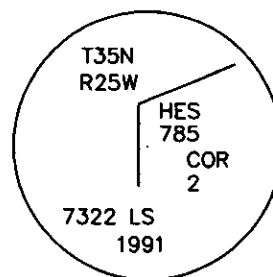
2. Found:

A USDA Aluminum monument, 3¼ ins. in diam., 12 ins. below surface of cultivated field, mkd. as shown;
 A Western Larch, 22 ins. in diam., bears S83°W, 59.70 ft. dist., with a well healed face;
 A Douglas Fir, 13 ins. in diam., bears North, 84.10 ft. dist., with a healed face.
 A Steel guard post is missing, record N60°W, 26.90 ft. dist.

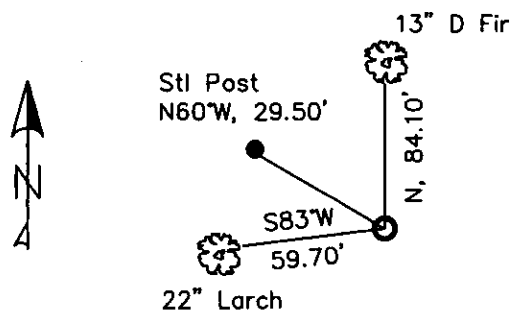
3. Reburied monument, repainted blazes and rings on all BTs.

Placed

A Steel Post, 6 ft. long, bears N60°W, 29.50 ft. dist. with LSM tag outside of fence.



MAGNETIC DECLINATION - 16° EAST



SKETCH OF CORNER

CERTIFICATION

I, CURT HECKROTH
 certify the information shown is true and correct.

Curt Heckroth

I, LAWRENCE A. GLAHE
 certify that the Corner Recordation was performed by me or under my direction in compliance with the "Corner Recordation Act" (MCA 92-22-001, et seq. M.C.A.)

Lawrence A. Glahe

Date: 11-10-12 9748 LS

Employer: GLAHE & ASSOC., INC.

Office of Clerk and Recorder, County of Lincoln. This "corner record" was filed for record 229673 BOOK: CCR CC&R'S PAGE: 11643 Pages: 1
 was noted on the cross-ind STATE OF MONTANA LINCOLN COUNTY
 book No. RECORDED: 11/16/2010 9:13 KOI: CC&R'S
TAMMY D. LAUER CLERK AND RECORDER
 FEE: \$0.00 BY: *Francis D. Lauer*
 TO: GLAHE & ASSOC., INC. P.O. BOX 1863, SANDPOINT, ID. 83860,
 2 HES 785

Cross Index No. 5023 T. 35N R. 25W PMM

Adopted July 1, 1981, Montana Board of Professional Engineers & Land Surveyors

Sec. 4

● corner this sheet

... ..

... ..

... ..

... ..

... ..

... ..

... ..

... ..

... ..

... ..

... ..

... ..

... ..

... ..

... ..

... ..