

CERTIFIED CORNER RECORDATION

Corner Cor 3 of HES 1260 T. 35N R. 25W P.M.M. Lincoln County

1942 HES Original Record by A.O. Modlin:

Set a limestone 6x3x3, marked with a cross (X) under an iron post, 3 ft. long, 2 ins. in diam., 26 ins. in the ground, with at Brass Cap mkd:

A Tamarack, 36 ins. in diam., bears N42°20' W, 17 lks. dist. mkd with a cross (X) & 3 HES 1260 BT;

A Cedar, 14 ins. in diam., bears N8°26'W, 118 lks. dist. mkd with a cross (X) & 3 HES 1260 BT;
Raise a mound of earth 4 ft. base, 2 ft. high, SW of corner.

1992 Resurvey by Alvah F. Hughes:

Found:

A USFS Brass Cap, 2½ ins. in diam., 8 ins. below ground under a cast iron drainage pipe, mkd. as shown.

A Larch stump, bears N42°W, 11.2 ft. dist, visible scribing;

A Cedar, 22 ins. in diam., bears N8°W, 77.9 ft. dist., healed face.

Set:

A Fir, 14 ins. in diam., bears N54°W, 37.5 ft. dist., scribed 3 HES 1260 BT.

A galvanized steel guard post, 6 ft. long with LSM and PB decals, bears N8°E, 3 ft. dist.

2. Found:

A Forest Service Brass monument, 2½ ins. in diam., 8 ins. below ground; mkd. as shown;

A Western Larch stump, 24 ins. in diam., 3 ft. tall, bears N42°W, 11.20 ft. dist., illegible scribing visible;

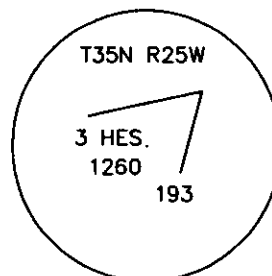
A Douglas Fir, 18 ins. in diam., bears N54°W, 37.50 ft. dist., with healed face;

A Cedar, 26 ins. in diam., bears N8°W, 77.90 ft. dist. with healed face;

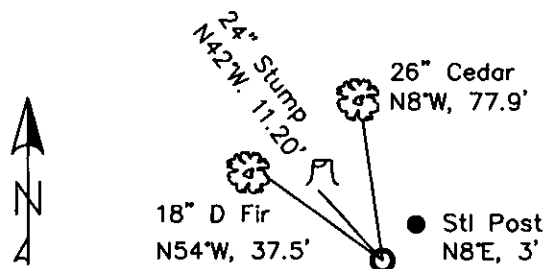
A Steel post, bears N8°E, 3 ft. dist. with LSM & Boundary tags.

3. Dug up monument & stacked and painted a mound of stone around it.

Repainted blazes and rings on all BTs.



MAGNETIC DECLINATION - 16° EAST



SKETCH OF CORNER

CERTIFICATION

I, CURT HECKROTH
certify the information shown here is true and correct.

I, LAWRENCE A. GLAHE
certify that the Corner Record Book is a true and correct copy of the original record book as performed by me or under my direction in compliance with the "Corner Recordation Act" (MCA 22-2-101, et seq.)

Date: 11-10-12 9748 LS

Employer: GLAHE & ASSOC., INC.

Office of Clerk and Recorder, County of Lincoln. This "corner
229672 BOOK: CCR CC&R'S PAGE: 11642 Pages: 1
record" was filed for record or STATE OF MONTANA LINCOLN COUNTY
was noted on the cross-index RECORDED: 11/16/2010 9:12 KOI: CC&R'S
book No. TAMMY D. LAUER CLERK AND RECORDER
FEE: \$0.00 BY: Debbie Steinfeld
TO: GLAHE & ASSOC., INC. P.O. BOX 1863, SANDPOINT, ID. 83860,
3 HES 1260
Cross Index No. 5016 T. 35N R. 25W PMM

Adopted July 1, 1981, Montana Board of Professional Engineers & Land Surveyors

Sec. 4

● corner this sheet

[illegible]